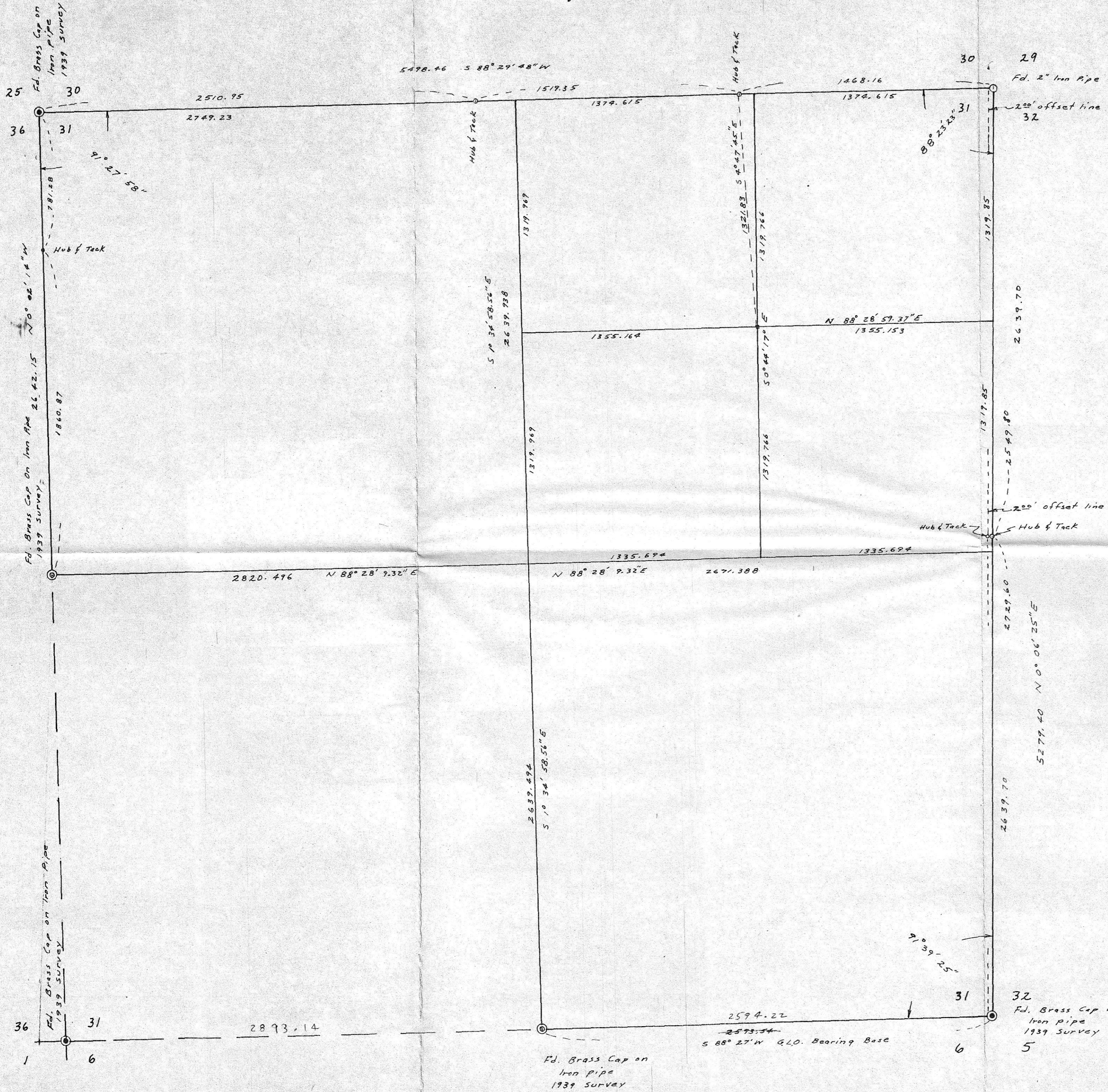


T 4 N, R 27 E. W.M.



RECEIVED BY
 Morrow County Surveyor
 Date 5-94
 Rec'd By SKB
 No. C-1004-E (776)

Donald L. Staebler

SURVEY TO DETERMINE
 CENTER OF N.E. 1/4, SEC. 31
 FOR
 COLUMBIA PUMP Co. OF
 PENDLETON, OREGON
 SCALE: 1" = 400' DATE: 6-29-71
 DONALD L. STAEBLER
 CONSULTING ENGINEER
 P. O. Box 91
 PENDLETON OREGON