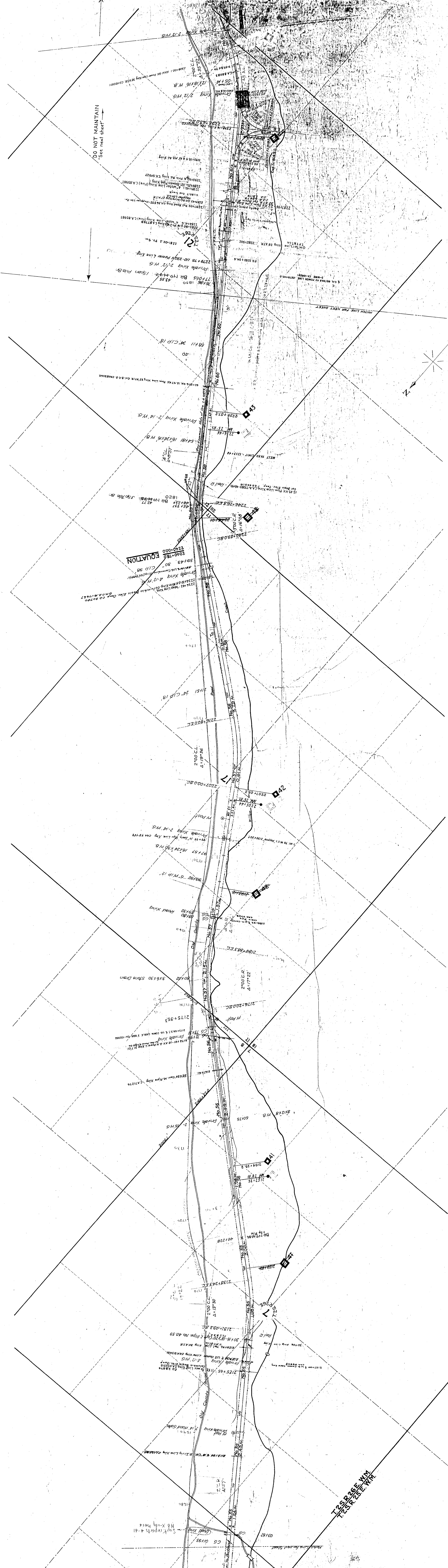


NUMBERS		SCHEDULE OF PROPERTY		RECORD		REMARKS	
SEAL	DATE	GRANTOR	INSTRUMENT	DATE	BOOK	PAGE	
55	1205	A.J. Brice	O. Ry. & N. Co. Grant	12/22/08	A	122	0.87
56	1237	John Hughes	Chas. Clark	12/22/08	Z	243	6.19
57	1254	John Hughes	Chas. Clark	12/22/08	Z	243	6.19
58	1259	John Hughes	Chas. Clark	12/22/08	Z	243	6.19
59	1260	John Hughes	Chas. Clark	12/22/08	Z	243	6.19
60	1267	Chas. Clark	Chas. Clark	12/22/08	E	126	0.55
61	1301	Alvina Clark	Chas. Clark	12/22/08	E	126	0.55
62	1301	Alvina Clark	Chas. Clark	12/22/08	E	126	0.55
63	1301	Alvina Clark	Chas. Clark	12/22/08	E	126	0.55
64	1301	Alvina Clark	Chas. Clark	12/22/08	E	126	0.55
65	1301	Alvina Clark	Chas. Clark	12/22/08	E	126	0.55
66	1301	Alvina Clark	Chas. Clark	12/22/08	E	126	0.55
67	1301	Alvina Clark	Chas. Clark	12/22/08	E	126	0.55
68	1301	Alvina Clark	Chas. Clark	12/22/08	E	126	0.55
69	1301	Alvina Clark	Chas. Clark	12/22/08	E	126	0.55
70	1301	Alvina Clark	Chas. Clark	12/22/08	E	126	0.55
71	1301	Alvina Clark	Chas. Clark	12/22/08	E	126	0.55
72	1301	Alvina Clark	Chas. Clark	12/22/08	E	126	0.55
73	1301	Alvina Clark	Chas. Clark	12/22/08	E	126	0.55
74	1301	Alvina Clark	Chas. Clark	12/22/08	E	126	0.55
75	1301	Alvina Clark	Chas. Clark	12/22/08	E	126	0.55
76	1301	Alvina Clark	Chas. Clark	12/22/08	E	126	0.55
77	1301	Alvina Clark	Chas. Clark	12/22/08	E	126	0.55
78	1301	Alvina Clark	Chas. Clark	12/22/08	E	126	0.55
79	1301	Alvina Clark	Chas. Clark	12/22/08	E	126	0.55
80	1301	Alvina Clark	Chas. Clark	12/22/08	E	126	0.55
81	1301	Alvina Clark	Chas. Clark	12/22/08	E	126	0.55
82	1301	Alvina Clark	Chas. Clark	12/22/08	E	126	0.55
83	1301	Alvina Clark	Chas. Clark	12/22/08	E	126	0.55
84	1301	Alvina Clark	Chas. Clark	12/22/08	E	126	0.55
85	1301	Alvina Clark	Chas. Clark	12/22/08	E	126	0.55
86	1301	Alvina Clark	Chas. Clark	12/22/08	E	126	0.55
87	1301	Alvina Clark	Chas. Clark	12/22/08	E	126	0.55
88	1301	Alvina Clark	Chas. Clark	12/22/08	E	126	0.55
89	1301	Alvina Clark	Chas. Clark	12/22/08	E	126	0.55
90	1301	Alvina Clark	Chas. Clark	12/22/08	E	126	0.55
91	1301	Alvina Clark	Chas. Clark	12/22/08	E	126	0.55
92	1301	Alvina Clark	Chas. Clark	12/22/08	E	126	0.55
93	1301	Alvina Clark	Chas. Clark	12/22/08	E	126	0.55
94	1301	Alvina Clark	Chas. Clark	12/22/08	E	126	0.55
95	1301	Alvina Clark	Chas. Clark	12/22/08	E	126	0.55
96	1301	Alvina Clark	Chas. Clark	12/22/08	E	126	0.55
97	1301	Alvina Clark	Chas. Clark	12/22/08	E	126	0.55
98	1301	Alvina Clark	Chas. Clark	12/22/08	E	126	0.55
99	1301	Alvina Clark	Chas. Clark	12/22/08	E	126	0.55
100	1301	Alvina Clark	Chas. Clark	12/22/08	E	126	0.55



RIGHT-OF-WAY AND TRACK MAP

OREGON-WASHINGTON RAILROAD & NAVIGATION COMPANY

BRANCH LINE

HEPPNER JCT TO HEPPNER

RECEIVED BY
Morrow County Surveyor
DATE: 4/14
BY: [Signature]
O. E. HODGE - Chief Engineer

JUNE 30 1918
PORTLAND OREGON
REVISED AS OF DEC. 31, 1917

7-42