

OREGON LAND AND WATER COMPANY'S

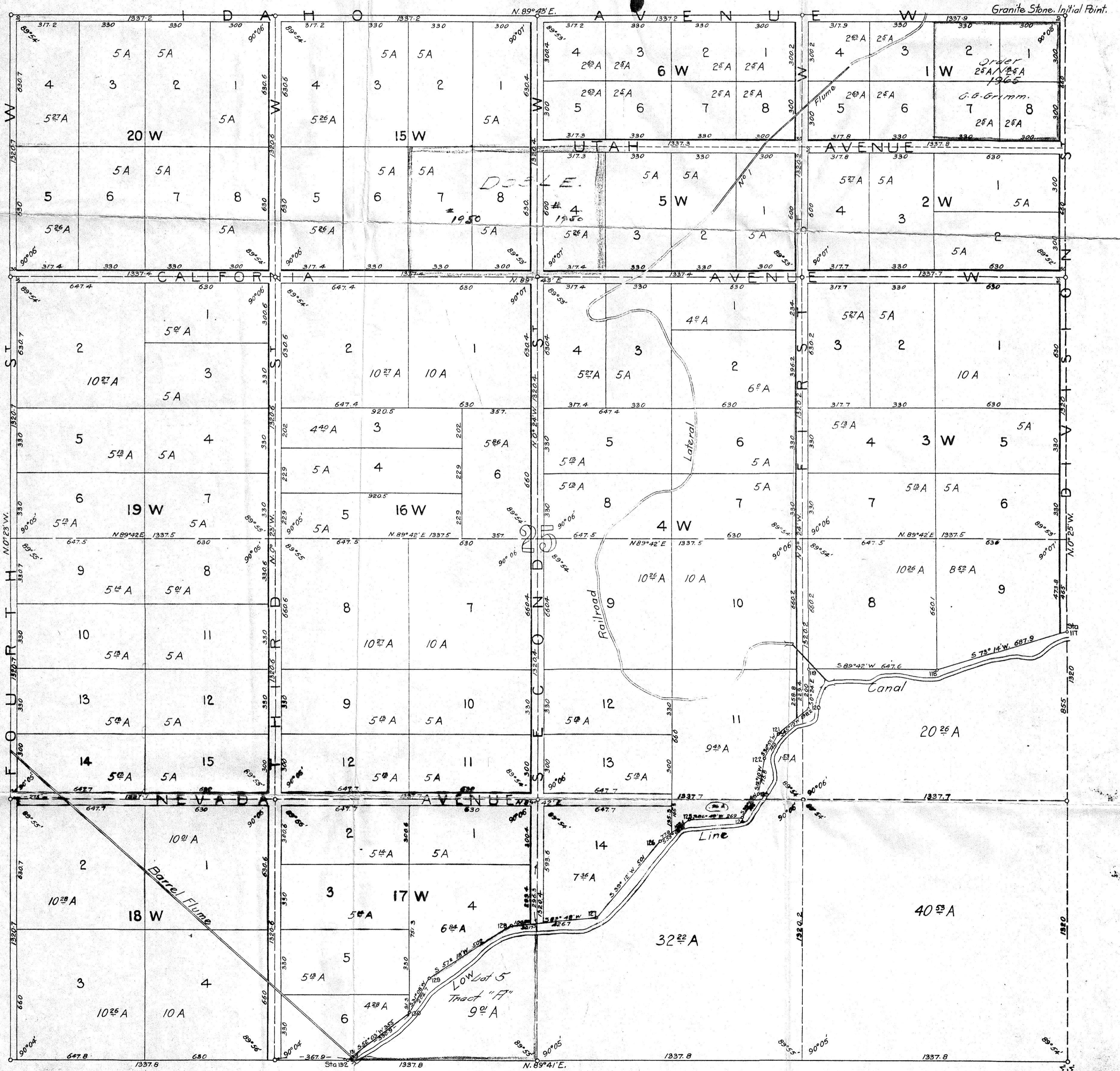
SUBDIVISION

OF A PART OF SECTION NUMBERED 25 IN TOWNSHIP
NUMBERED 5 NORTH OF RANGE NUMBERED 26 EAST OF
THE WILLAMETTE MERIDIAN.

Scale 1 in = 300 feet.

Areas calculated to
Center of Streets

Irving Worthington
Chief Engineer.



I hereby certify that this is an accurate plat of Section
numbered 25, Township numbered 5, North, of Range numbered 26. East of
the Willamette Meridian, as surveyed by me, and under my directions, in
August, 1906.

Irving Worthington
Chief Engineer.
OREGON LAND AND WATER COMPANY.

RECEIVED BY
Morrow County Surveyor
Date 1/94
Rec'd By *SKB*
No. C-988-E (760)

T. 5. N. R. 26. E. W. 11.
T. 5. N. R. 27. E. W. 11.