

OREGON LAND AND WATER COMPANY'S

SUBDIVISION

OF A PART OF SECTION NUMBERED 24 IN TOWNSHIP NUMBERED 5 NORTH OF RANGE NUMBERED 26 EAST OF THE WILLAMETTE MERIDIAN.

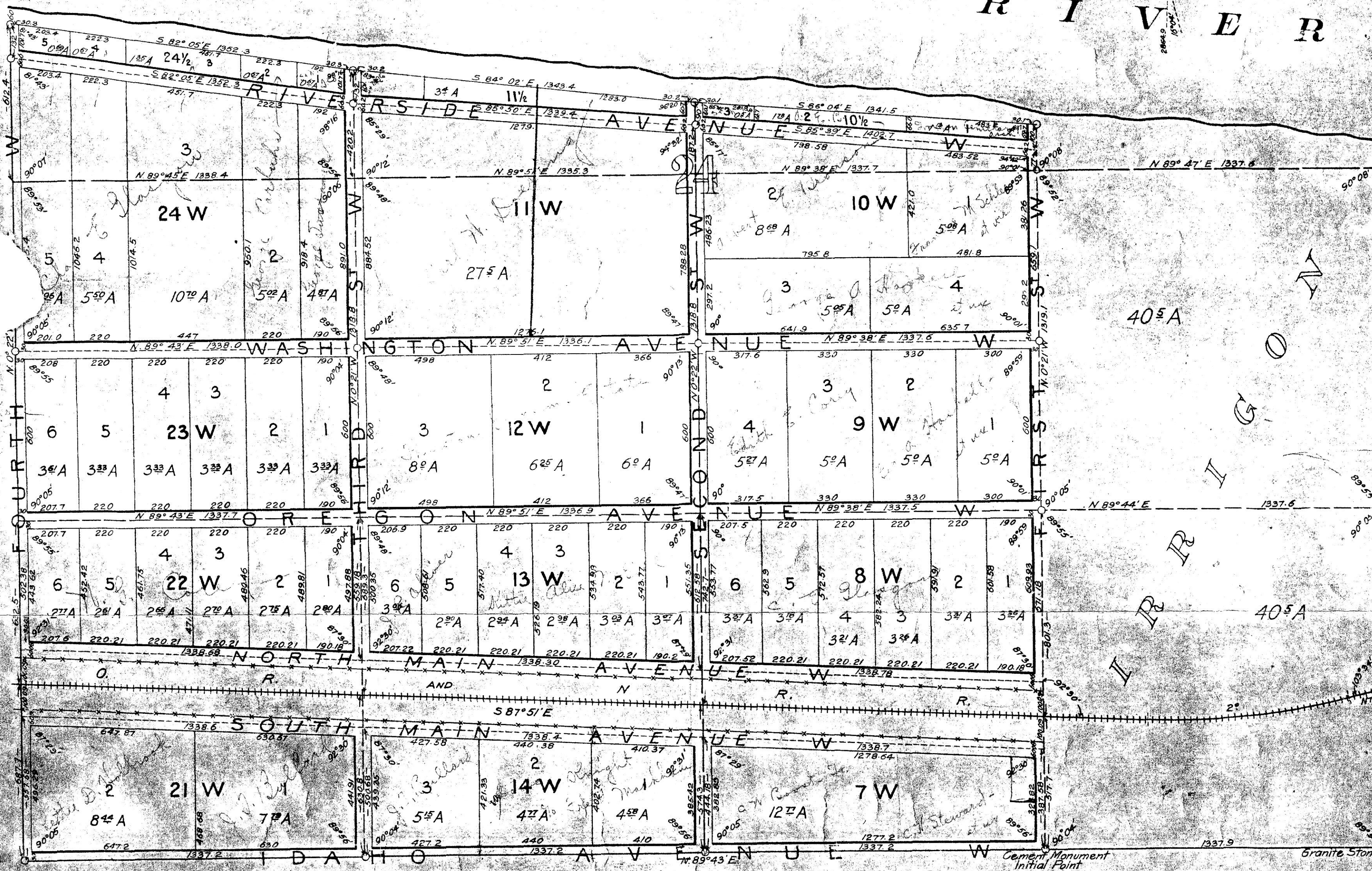
Scale 1 in = 300 feet.

Areas calculated to Center of Streets

Irving Worthington Chief Engineer

C O L U M B I A

R I V E R



Not Recorded but referred to in deeds.
This copy to County Assessor.

I hereby certify that this is an accurate plat of Section numbered 24, Township numbered 5, North, of Range numbered 26, East of the Willamette Meridian, as surveyed by me, and under my directions, in August, 1906.

Ladd Estate Company
Fred W. Radolf, Chief Engr.

Irving Worthington
Chief Engineer

OREGON LAND AND WATER COMPANY.

RECEIVED BY
Morrow County Surveyor
Date 1/94
Rec'd By SKB
No. C-387-E (759)