

OREGON LAND AND WATER COMPANY'S

SUBDIVISION

OF A PART OF SECTION NUMBERED 19 IN TOWNSHIP NUMBERED 5 NORTH OF RANGE NUMBERED 27 EAST OF THE WILLAMETTE MERIDIAN.

Scale 1 in = 300 feet.

Areas calculated to Center of Streets

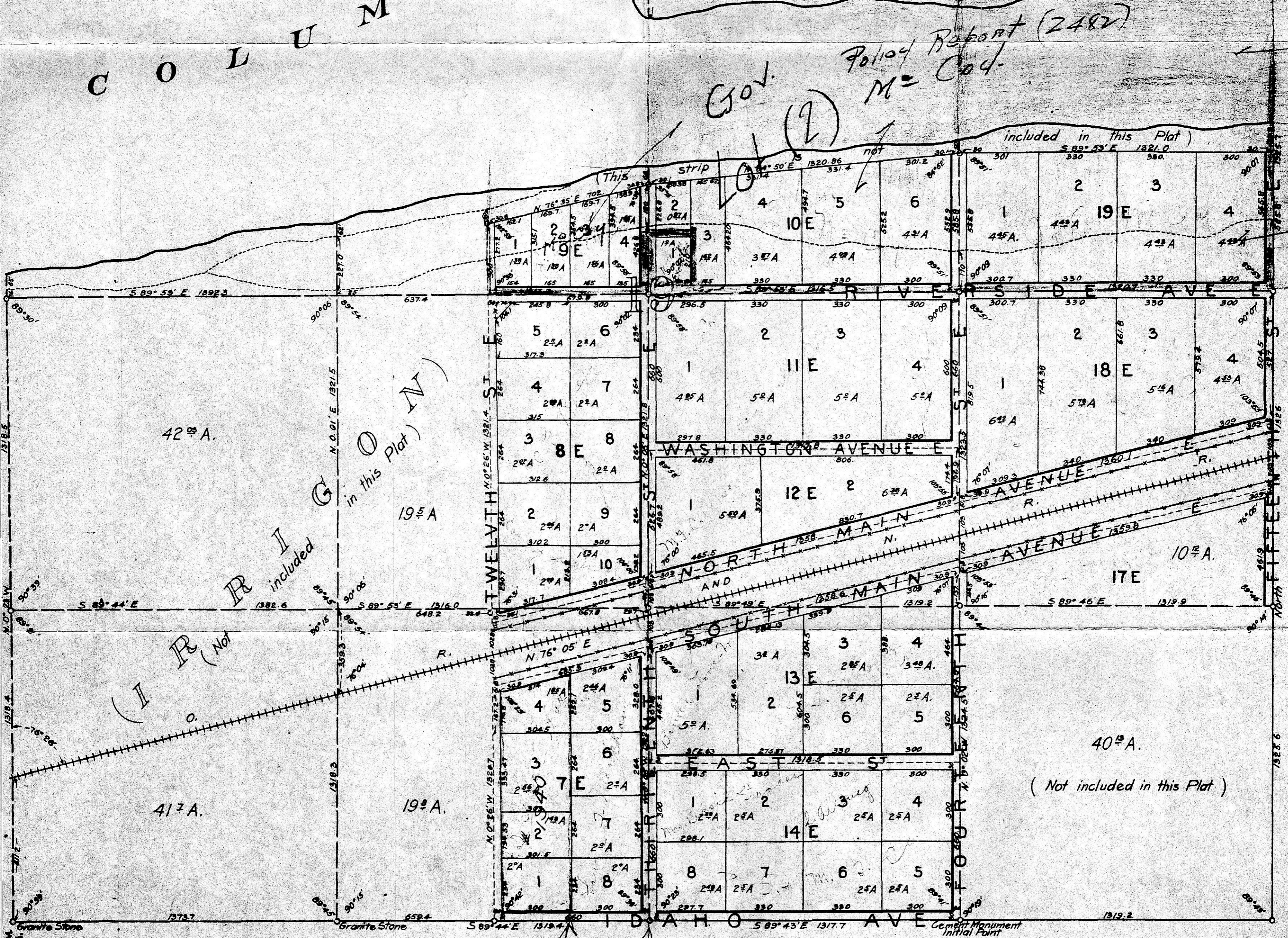
Irving Worthington Chief Engineer.

RECEIVED BY Morrow County Surveyor Date 1/94 Rec'd By SKB No. C-985-E (157)

C O L U M B I A

R I V E R I S L A N D

(Not included in this Plat)



Not Recorded - but referred to in deeds. This copy to the County Assessor. Ladd Estate Company, Fred W. Rodolf, Chief Eng'r.

FUB space # 16100 1940 1/4 Lot

I hereby certify that this is an accurate plat of Section numbered 19, Township numbered 5, North, of Range numbered 27, East of the Willamette Meridian as surveyed by me, and under my directions, in August, 1906.

Irving Worthington Chief Engineer. OREGON LAND AND WATER COMPANY.