

I do hereby certify that this is an exact copy of the filed plat of "HURD'S COLUMBIA VIEW ESTATES"

# HURD'S PRAIRIE VIEW ESTATES

AN ADDITION TO THE CITY OF IRRIGON, MORROW COUNTY OREGON, A REPLAT OF LOTS 5 & 6, BLOCK 13E OF SUBDIVISION OF PART OF SEC. 19, BOOK 2, PAGE 1 LOCATED IN THE NE 1/4, SW1/4, SE 1/4 SECTION 19, T.5 N., R.27 E., W.M.

FND 2" B.C. SET BY L.S. 933 S.E. 1/16

### LEGEND

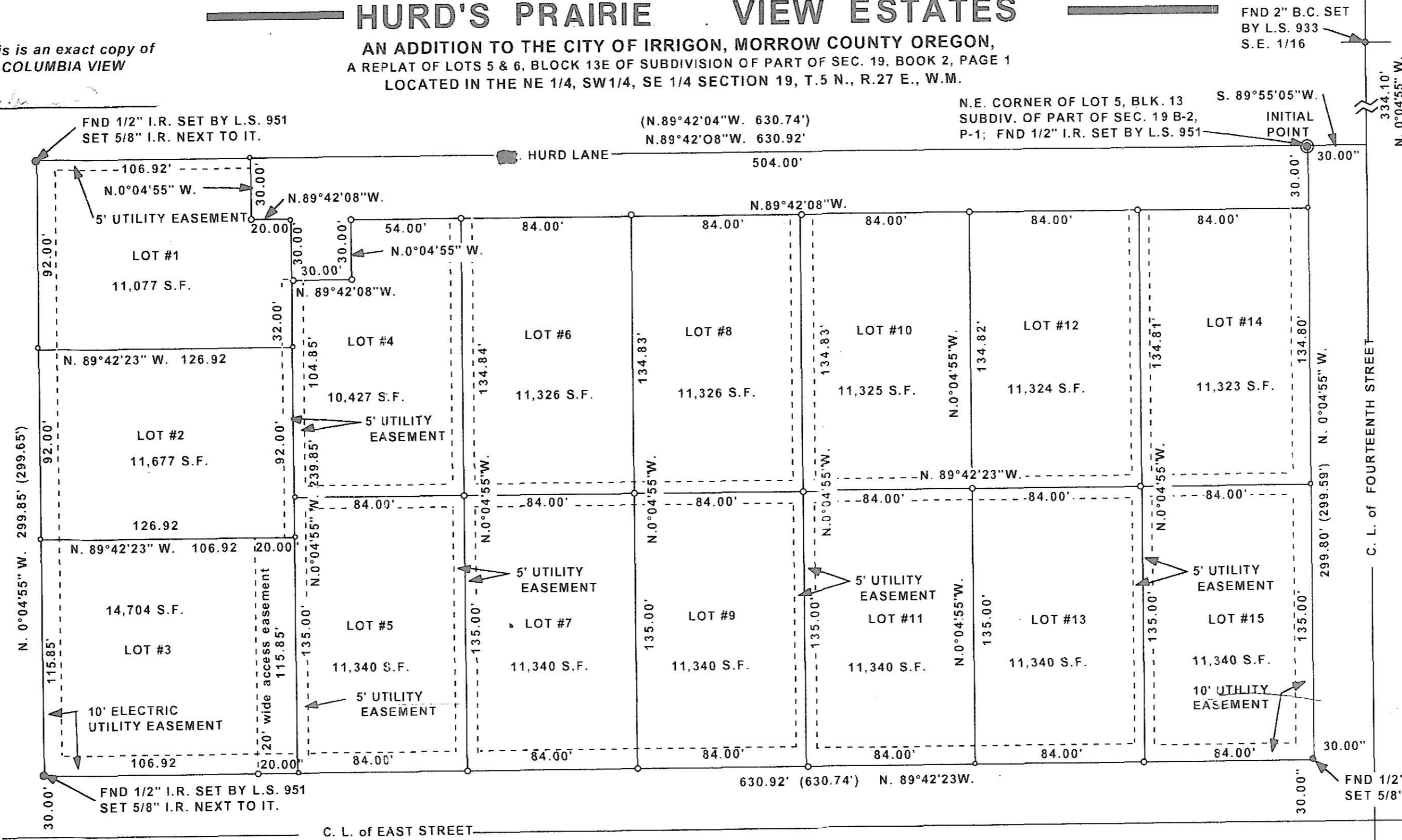
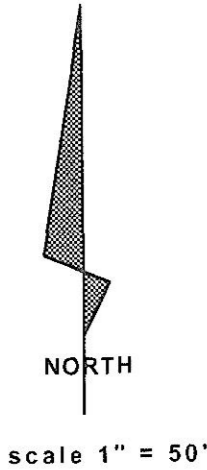
- ⊙ INITIAL POINT
- 5/8" Dia. x 24" I.R. Set w/copper caps stamped LS 1756
- Points Found as Noted.
- (000) Of Record

### SURVEYOR'S CERTIFICATE:

I, IVAN G. DRIVER, DO DEPOSE AND SAY THAT I AM A REGISTERED LAND SURVEYOR IN THE STATE OF OREGON, AND THAT I HAVE CORRECTLY SURVEYED AND MARKED WITH LEGAL MONUMENTS THE LAND REPRESENTED IN THE ACCOMPANYING PLAT OF "HURD'S COLUMBIA VIEW ESTATES" LOCATED IN THE CITY OF IRRIGON, MORROW COUNTY, OREGON. AT THE INITIAL POINT I SET FLUSH WITH THE GROUND SURFACE A 6" DIAMETER, 24" LONG CONCRETE MONUMENT WITH AN EMBED IRON ROD AND A 3" DIAMETER BRASS CAP STAMPED "HURD'S COLUMBIA VIEW ESTATES, 1993, L.S. 1756" THENCE N.89°42'08"W., 630.92 FEET ALONG THE NORTH LINES OF LOTS 5 & 6 OF BLOCK 13E; THENCE S.0°04'55"E., 299.85 FEET ALONG THE WEST LINE OF SAID LOT 6; THENCE S.89°42'23"E., 630.92 FEET ALONG THE SOUTH LINES OF SAID LOTS 5 & 6; THENCE N.0°04'55"W., 299.80 FEET TO THE INITIAL POINT.

### REFERENCE:

See Morrow County Filed Survey B-885-E 1988 for additional information concerning reference survey.



### DEDICATION ENJOINMENTS:

KNOW ALL MEN BY THESE PRESENTS, THAT DONALD W. HURD AND MERLA D. HURD HUSBAND AND WIFE, OWNERS OF THE LANDS ENCOMPASSING LOTS 5 AND 6 OF BLOCK 13E AS SHOWN ON THE ACCOMPANYING PLAT DO HEREBY JOIN IN THE ESTABLISHING AND ACKNOWLEDGING THE ACCOMPANYING PLAT AS THE OFFICIAL MAP AND PLAT OF "HURD'S COLUMBIA VIEW ESTATES", LOCATED IN THE CITY OF IRRIGON, MORROW COUNTY, OREGON AND HEREBY DEDICATE TO THE USE OF THE PUBLIC FOREVER, THE RIGHTS-OF-WAY AND PUBLIC UTILITY EASEMENTS DESIGNATED THEREON.

Donald W. Hurd Merla D. Hurd  
DONALD W. HURD MERLA D. HURD

STATE OF OREGON )  
COUNTY OF MORROW ) s.s.

ON THIS 1<sup>st</sup> DAY OF November, 1993, BEFORE ME A NOTARY PUBLIC IN AND FOR SAID CITY, COUNTY AND STATE, PERSONALLY APPEARED DONALD W. HURD AND MERLA D. HURD, HUSBAND AND WIFE, PERSONALLY KNOWN TO ME TO BE THE IDENTICAL PERSONS DESCRIBED AND EXECUTED THE FOREGOING ENJOINMENT AND ACKNOWLEDGED TO ME THAT THEY FREELY AND VOLUNTARILY EXECUTED THE SAME FOR THE USES AND PURPOSES MENTIONED.

SUBSCRIBED AND SWORN TO BEFORE ME THIS 1<sup>st</sup> DAY OF November, 1993

Donna V. Edmunds July 15, 1992  
NOTARY PUBLIC OF OREGON MY COMMISSION EXPIRES  
CITY OF IRRIGON PLANNING DIRECTOR:  
The accompanying plat is hereby approved this 1<sup>st</sup> day of November, 1993

City of Irrigon Planning Director Donna V. Edmunds

WEST EXTENTION IRRIGATION DISTRICT:  
The accompanying plat is hereby approved by resolution of the undersigned Board of Directors, duly adopted this 24<sup>th</sup> day of November, 1993 and report of said approval filed.

Janet A. Oles Sharon Rea  
Chairman Secretary

### COUNTY ASSESSOR & TAX COLLECTOR:

I, Gregory Paul Sweek Assessor and I, Nancy Sheres Tax Collector of Morrow County, Oregon, do hereby certify that we have examined the tax records relative to the lands covered by the accompanying plat and all monies for the State and County taxes and assessments that could constitute a lien on said lands have been paid.  
Gregory Paul Sweek Nancy Sheres  
County Assessor County Tax Collector  
Dated this 2<sup>nd</sup> day of December, 1993

### COUNTY COURT:

This is to certify that the accompanying plat is approved for filing and recording in the "Record of Town Plats" of Morrow County, Oregon by the undersigned by its order this 8<sup>th</sup> day of December, 1993.

Rowen Anderson  
County Judge County Commissioner

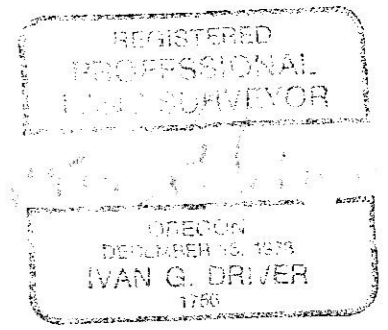
### COUNTY CLERK:

Attest:  
I, Barbara Bloodsworth County Clerk of Morrow County, Oregon, do hereby certify the above named were on the date of said order above specified and now are the duly qualified, elected, sworn and acting Judge and Commissioners of said County, and that the seal affixed is the seal of my office.  
Barbara Bloodsworth  
County Clerk  
Dated this 8<sup>th</sup> day of December, 1993

### MORROW COUNTY SURVEYOR:

The accompanying plat is hereby approved this 1<sup>st</sup> day of November, 1993  
County Surveyor

12-03-93



RECEIVED  
MORROW COUNTY, OREGON

Filed 12-9-93 at 4:50pm  
as file No. 149585

Barbara Bloodsworth  
Shirley McCall, Lakey Deputy

RECEIVED BY  
Morrow County Surveyor  
Date 1/94  
Rec'd By SKB  
No. R-980-E 152