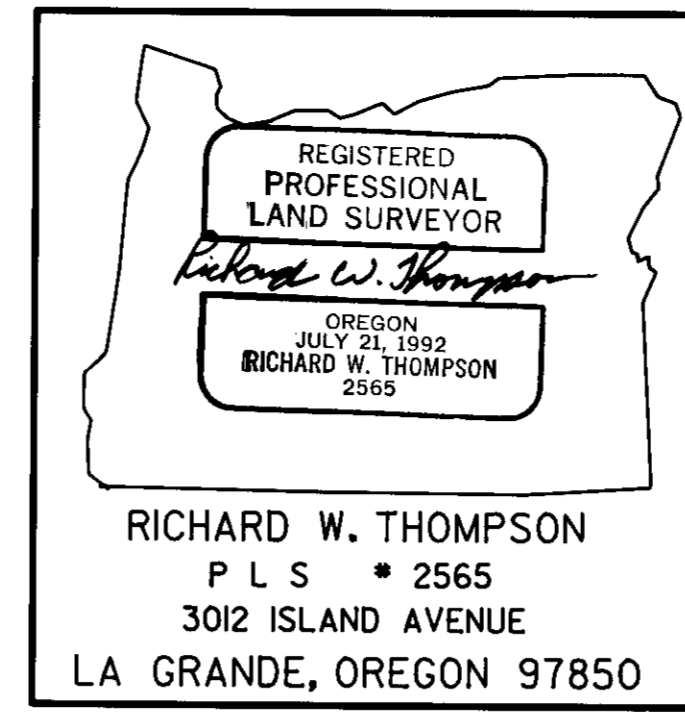


Coordinate Table

MAIN TRAVERSE

Pt.*	Northing	Eastng	Bearing	Dist.
1	9998.502	17359.440	N 89° 58' 03" E	2640.56
2	10000.000	20000.000	N 88° 02' 14.2" E	525.16
3	10017.986	20524.853	N 4° 00' 46.3" W	747.22
4	10763.371	20472.563	N 83° 16' 39.7" W	1995.50
5	10996.959	18490.778	S 48° 34' 12.5" W	1508.92

T. 1 S., R. 24 E., Sec. 3, W.M.



SURVEY FOR :
Oregon Department of Transportation

Sheet No.

PROJECT :
Rietmann Canyon Bridge #00672

Total Sheets

Heppner highway #52

MORROW COUNTY

Key No. 05361

EA # C1025-1488

Date of Survey : November 18, 1992

RECEIVED BY
Morrow County Surveyor
Date 10/93
Rec'd By SKB
No. C-965-E (737)



SCALE : 1" = 100'

LEGEND

- Fd Monument
- Set Monument as noted
- Original distance of Thompson, 1865 G.L.O. Survey

Pt. # 5
Set Hub & Tack

1508.92'
S 48° 34' 12.5" W

NARRATIVE OF SURVEY

The purpose of this survey is to establish horizontal control for construction and setting any needed R/W for Rietmann Canyon Bridge, Mile Post 28.32, Heppner Highway (Highway #74), Ione, Oregon.

The Basis of Bearing was determined by a traverse through Sec. Corner 3, 4, 9, 10 and the 1/4 Sec. Corner of 4, 9, T. 1 S., R. 24 E. The coordinates for these survey are assumed. Error of closure for the travers is 1:30,600 before adjustment.

CITY OF IONE

(2640')

2640.56'

N 89° 58' 03" E

1995.50'
N 83° 16' 39.7" W

HEPPNER HWY.

Bridge

Pt. # 4
Set 1/2" SQ Pin with cap stamped "TRAV. PT 4"

N 4° 00' 46.3" W
747.22'

Pt. # 2, Sec. Cor. Fd. 2 3/8" brass disk set in Main Street, stamped "T1S R24E 4/9/10"

N 88° 02' 14.2" E

525.16'

Pt. # 3
Set Rail Road Spike

Pt. # 1, 1/4 Sec. Cor. Fd. 2 3/8" brass disk set in Main Street, stamped "T1S R24E 4/9"

WILLOW ST.

SPRING ST.

1/2" ST.

1/2" ST.

1/2" ST.

1/2" ST.

1/2" ST.

1/2" ST.

1/2" ST.

1/2" ST.

ELLA RD.

RIETMANN CR.

MAIN ST.