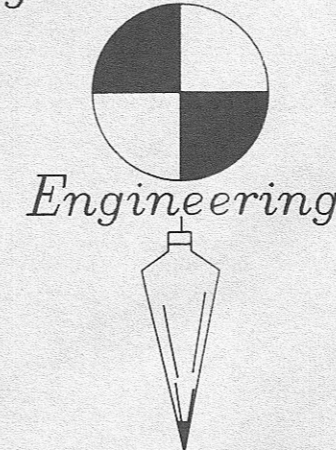
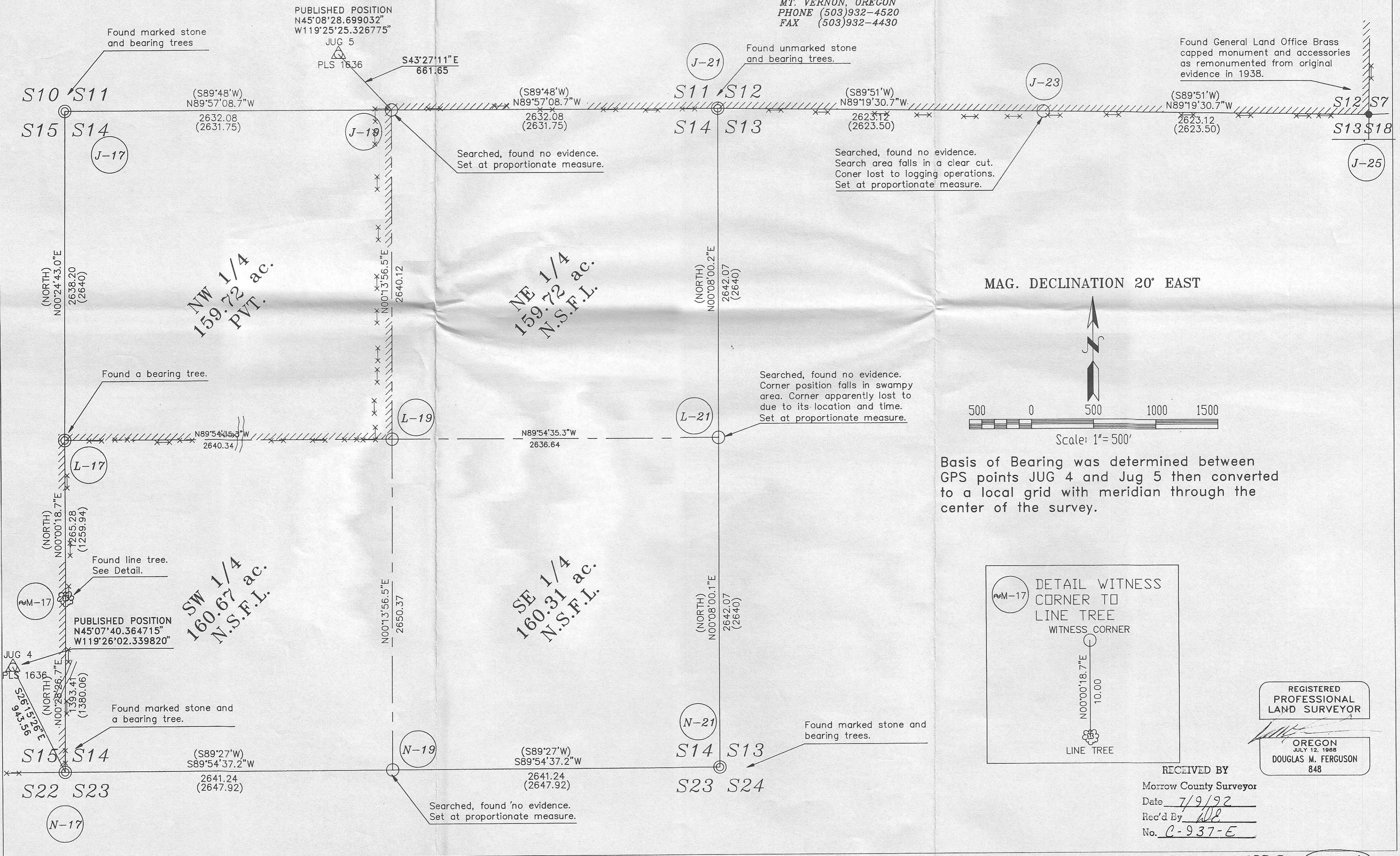


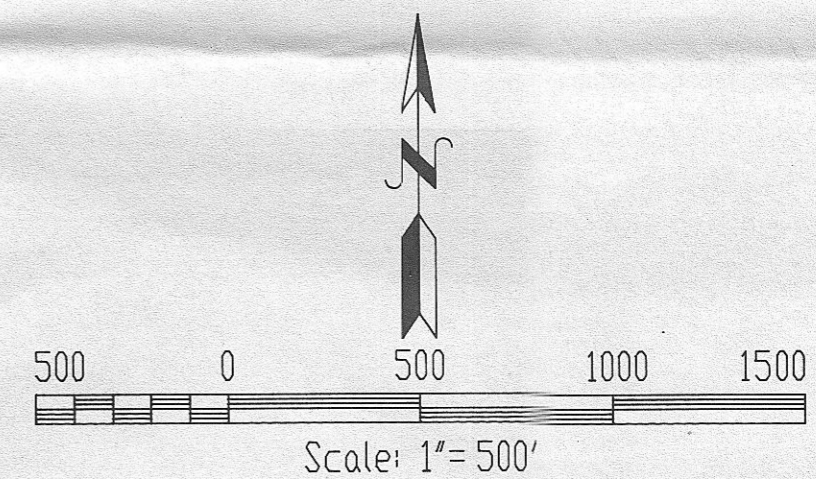
Ferguson Surveying



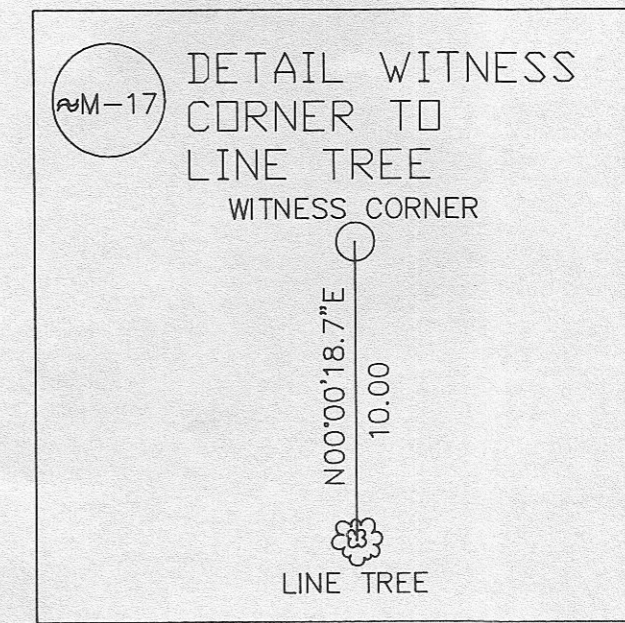
Engineering
MT. VERNON, OREGON
PHONE (503)932-4520
FAX (503)932-4430



MAG. DECLINATION 20° EAST



Basis of Bearing was determined between GPS points JUG 4 and Jug 5 then converted to a local grid with meridian through the center of the survey.



REGISTERED PROFESSIONAL LAND SURVEYOR
DOUGLAS M. FERGUSON
848

RECEIVED BY
Morrow County Surveyor
Date 7/9/92
Rec'd By [Signature]
No. C-937-E