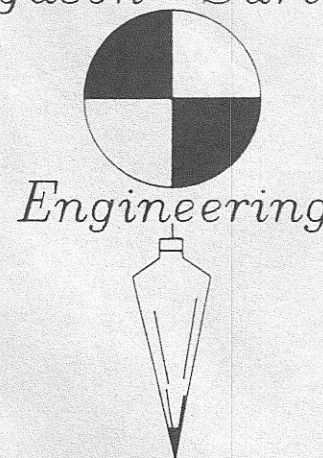
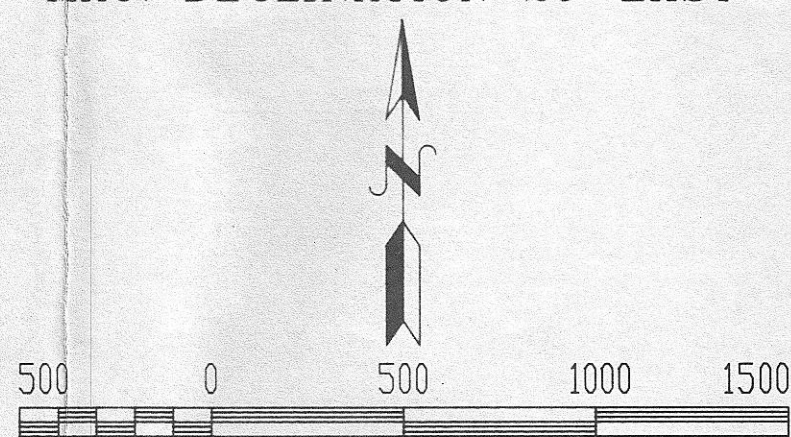
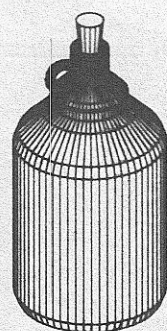


MAG. DECLINATION 20° EAST

Ferguson Surveying

JUG, T.5S., R.27E., SECTIONS 19 & 20  
SHEET 2 OF 3



Engineering  
MT. VERNON, OREGON  
PHONE (503)932-4520  
FAX (503)932-4430

REGISTERED  
PROFESSIONAL  
LAND SURVEYOR

OREGON  
JULY 12, 1988  
DOUGLAS M. FERGUSON  
848

Found aluminum cap monument and accessories as remonumented by F.S. Munro, P.L.S. 1832, in 1986, from original evidence.

Basis of bearing was determined between GPS points Jug 1 and Jug 2.

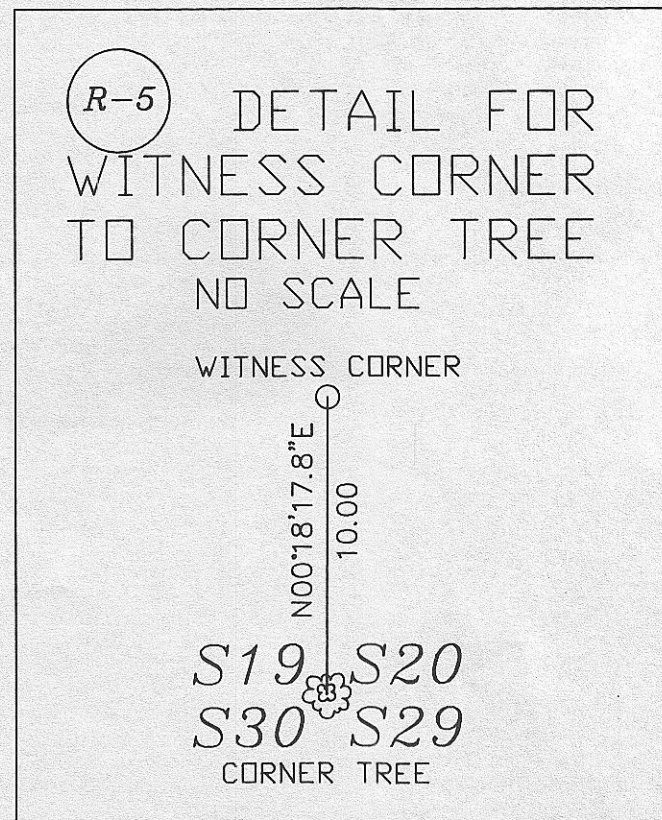
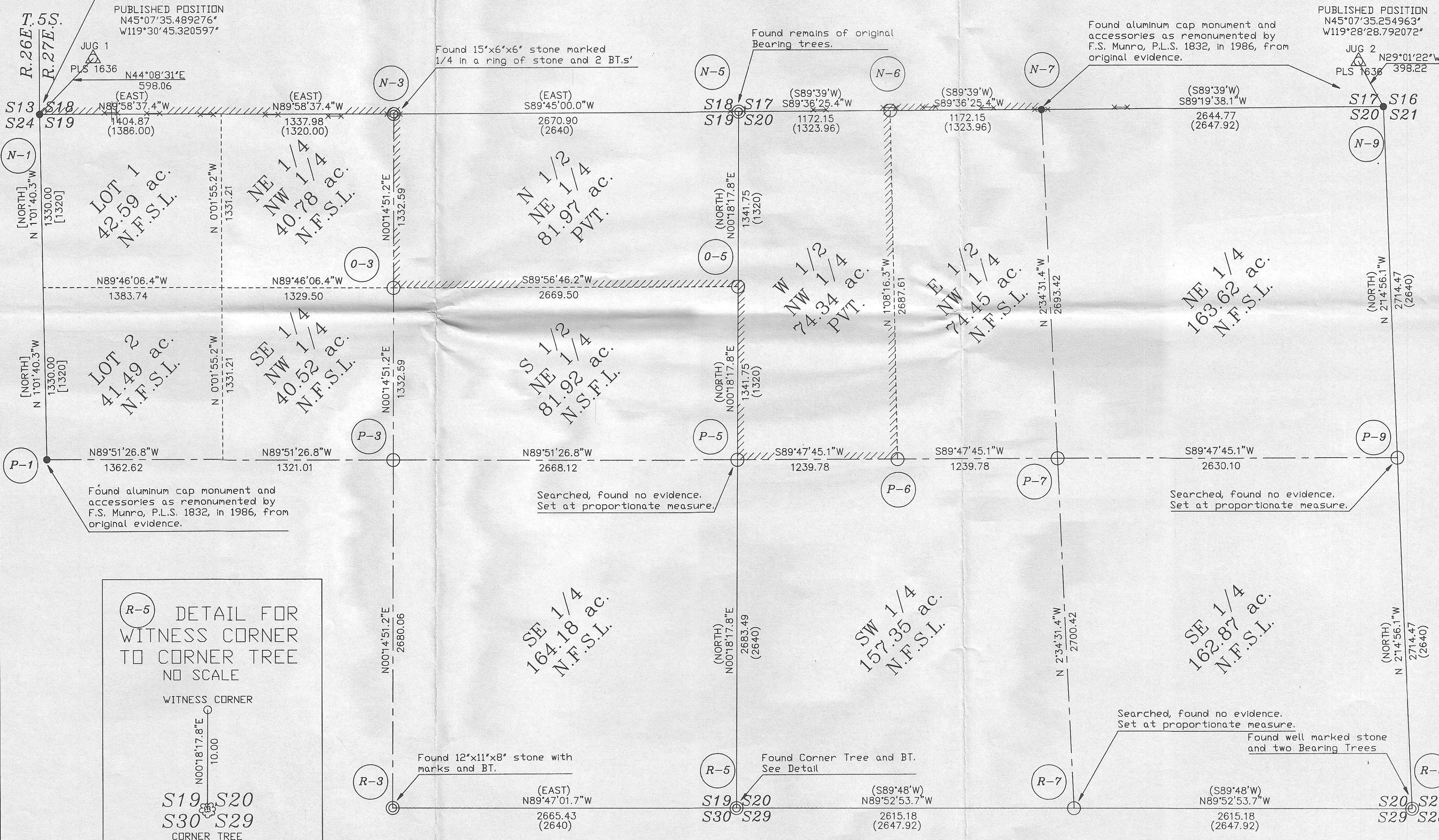
Found 15"x6"x6" stone marked 1/4 in a ring of stone and 2 BT.s'

Found remains of original Bearing trees.

Found aluminum cap monument and accessories as remonumented by F.S. Munro, P.L.S. 1832, in 1986, from original evidence.

PUBLISHED POSITION  
N45°07'35.254963"  
W119°28'28.792072"

JUG 2  
N29°01'22"W  
PLS 1636 398.22



Found 12"x11"x8" stone with marks and BT.  
(EAST)  
N89°47'01.7"W  
2665.43  
(2640)

Found Corner Tree and BT. See Detail.  
(S89°48'W)  
N89°52'53.7"W  
2615.18  
(2647.92)

Searched, found no evidence. Set at proportionate measure.  
Found well marked stone and two Bearing Trees  
(S89°48'W)  
N89°52'53.7"W  
2615.18  
(2647.92)