

PATERSON FERRY RD. INTCH. SEC.				
OLD OREGON TRAIL HIGHWAY				
MORROW COUNTY				
FED. ROAD Div. No.	STATE	PROJECT NUMBER	FISCAL YEAR	TC
10	OREGON			

INDEX OF SHEETS	
Sheet No.	DESCRIPTION
1	Title Sheet
2	Survey Filing Plan Sheet

STATE OF OREGON
DEPARTMENT OF TRANSPORTATION
STATE HIGHWAY DIVISION
Survey Filing

PATERSON FERRY ROAD INTERCHANGE SECTION
OLD OREGON TRAIL HIGHWAY
MORROW COUNTY
SEPTEMBER 1991

- ⊙ FOUND BRASS DISC
- R/W SET 5/8" IRON ROD WITH ALUMINUM CAP.
- ▲ FOUND MONUMENT AS NOTED

N.A.D. 1927- OREGON NORTH ZONE
NOTE: Coordinates used on this map are a local datum plane which represent true ground distances. To convert L.D.P. coordinates to Oregon State North Zone, multiply L.D.P. coordinates by 0.9999508.

SURVEY NARRATIVE

The purpose of this survey was to monument the Right-of-Way acquisition for the Paterson Ferry Interchange project on Interstate 84 approximately 7 miles east of Boardman.

The survey was in Sections 15, 16, 21 and 22 T. 4 N., R. 26 E., W.M. 1.

The base of bearing for the survey was triangulation stations Irrigon U.S.E. (Oregon) and Irrigon U.S.G.S. (Washington) traversing thru existing common centerline monuments on each end of the project. The closure for this traverse was 1/83,000 adjusted by compass rule.

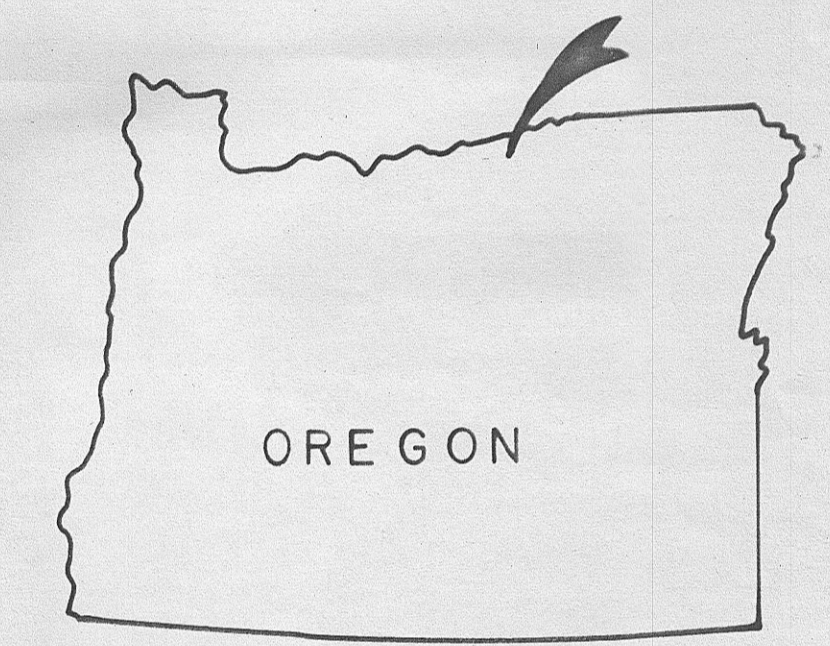
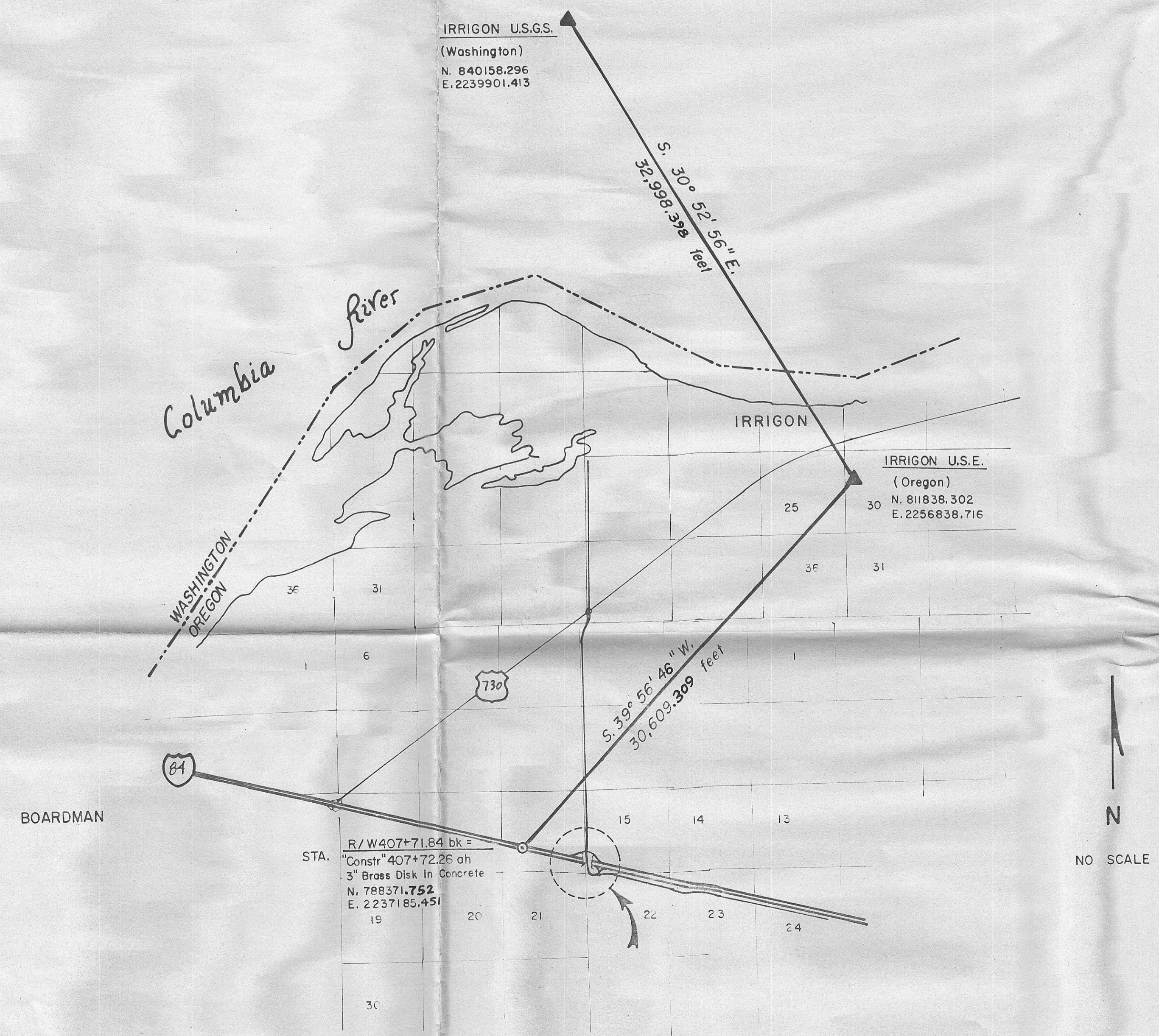
All changes in direction of the Right-of-Way were monumented using 5/8" x 30" iron rods with a post and paddle stamped with station and distance from common centerline.

Stationing was established from centerline of the existing structure east and west. This compared favorably with monumentation to the west and equated with monumentation to the east.

Points 80 and 90 were established by intersecting with existing "CRW" monumentation.

Coordinates shown are the Oregon Coordinate System of 1927 North Zone and converted to Local Datum Plane by a conversion (grid) factor for elevation and latitude of 0.9999508 obtained by using the scale factor for Irrigon U.S.E. (Ore.) and elevation of O.S.H.D. Benchmark, designation X572 level line no. 371(OSHD).

The field notes for this survey are on file in the Salem office, Road Design Section, book no. 2988.



REGISTERED
PROFESSIONAL
LAND SURVEYOR

WALTER ROBERT SULLIVAN
Oct 2, 1978
1976

OREGON STATE HIGHWAY DIVISION
3012 Island Ave.
LaGrande, Oregon 97850

RECEIVED BY
Morrow County Surveyor
Date 6/92
Rec'd By DE
No. D-728-E
697