

SURVEY PLAT MAP
 N 1/2 SECTION 21, T.5N., R.27E. W.M.
 SCALE: 1" = 200'

¢ R.R. CURVE DATA
 Δ 10° 41' 53"
 (Δ 10° 40')
 R = 2856.25'
 T = 267.43'
 L = 533.30'
 C = 532.55'

R/W CURVE DATA
 Δ = 10° 41' 53"
 R = 2909.20'
 L = 542.64'
 T = 272.11'
 C = 541.88'
 N. 76° 33' 35" E.

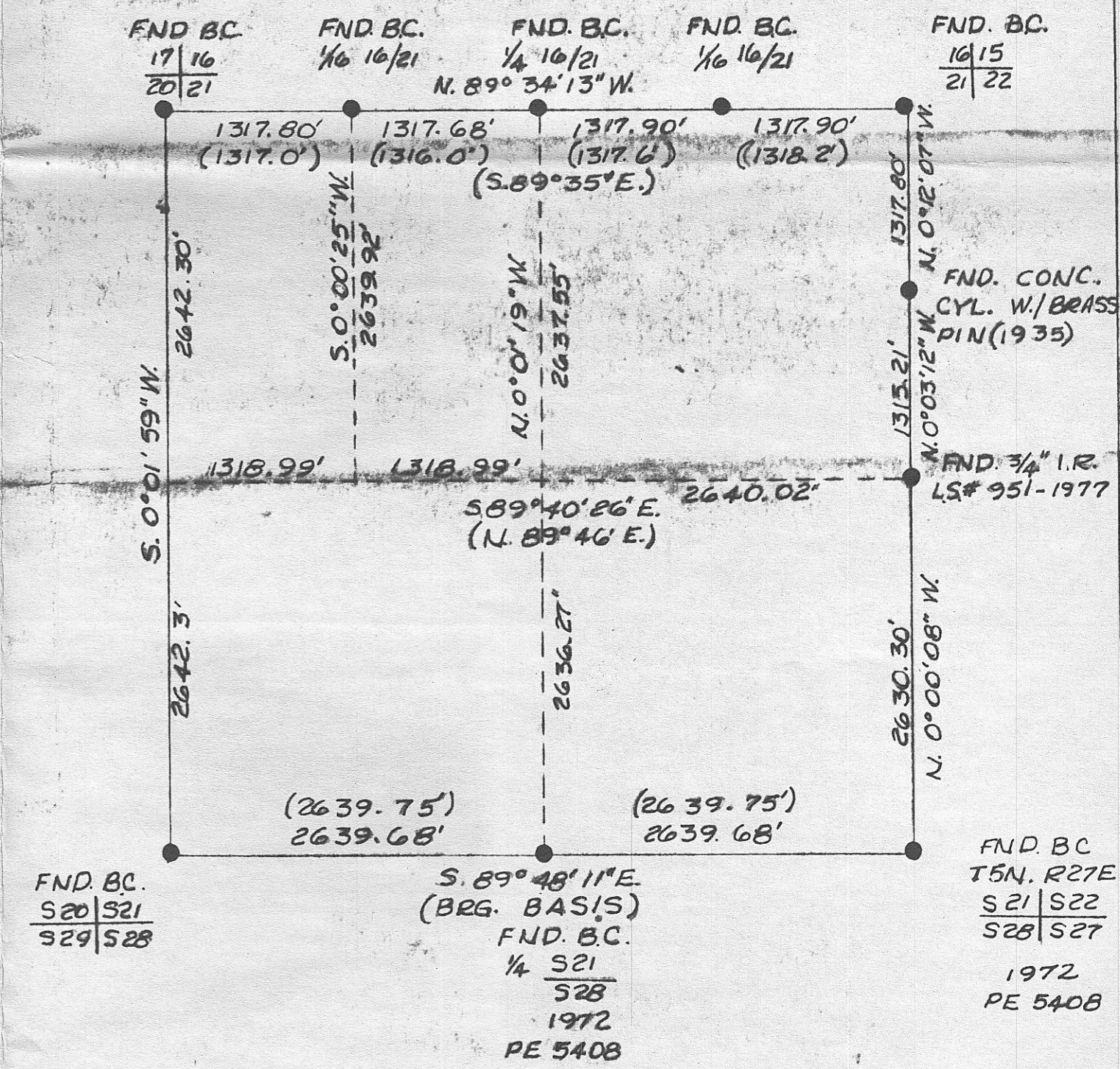
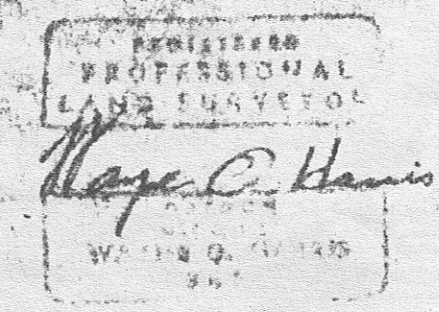
- ① N. 71° 12' 38" E.
C. DIST. 100.00'
- ② N. 73° 10' 53" E.
C. DIST. 100.00'
- ③ N. 75° 09' 11" E.
C. DIST. 100.00'
- ④ N. 77° 07' 29" E.
C. DIST. 100.00'
- ⑤ N. 79° 05' 47" E.
C. DIST. 100.00'
- ⑥ N. 81° 04' 05" E.
C. DIST. 41.88'

NOTES:
 BEARINGS ARE BASED UPON TIES
 TO N.O.S. STATIONS "HAWK"
 & IRRIGON. THOSE DISTANCES
 AND BEARINGS SHOWN ARE TRUE.

REF: SURVEY BY PE. 5408 - APRIL 1975
 MORROW COUNTY DEED RECORDS
 M-1766 & M-4133
 SUB-DIVISION OF PART OF SECTION
 21, T.5N., R.27E. W.M. BY PE #1033
 FILED MORROW COUNTY PLAT
 BOOK MAY, 1935.
 (THETA CORR. +0° 46' 06")

LEGEND:
 ● POINTS FND AS NOTED
 ○ 1/2" x 24" I. PINS SET
 () RECORD

RECEIVED BY
 Morrow County Surveyor
 Date 6/92
 Rec'd By DE
 No. B-920-E
685



COMPOSITE MAP
 SECTION 21, T.5N., R.27E. W.M.
 (NOT TO SCALE)

SURVEY FOR GLENN BATES SECTION 21, T.5N., R.27E.W.M.		WAYNE HARRIS CO. INC. ENGINEERS, SURVEYORS PENDLETON			
SCALE SHOWN	DATE 02-14-79	DWN I.D.	CHK WOH	DWG. NO. 78-157.B	