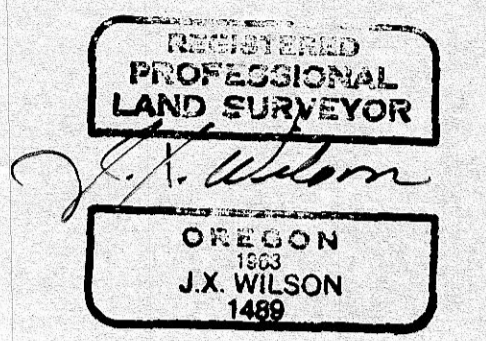


T. 2 N., R. 27 E., W.M.
DRG. NO. 9B-32-2

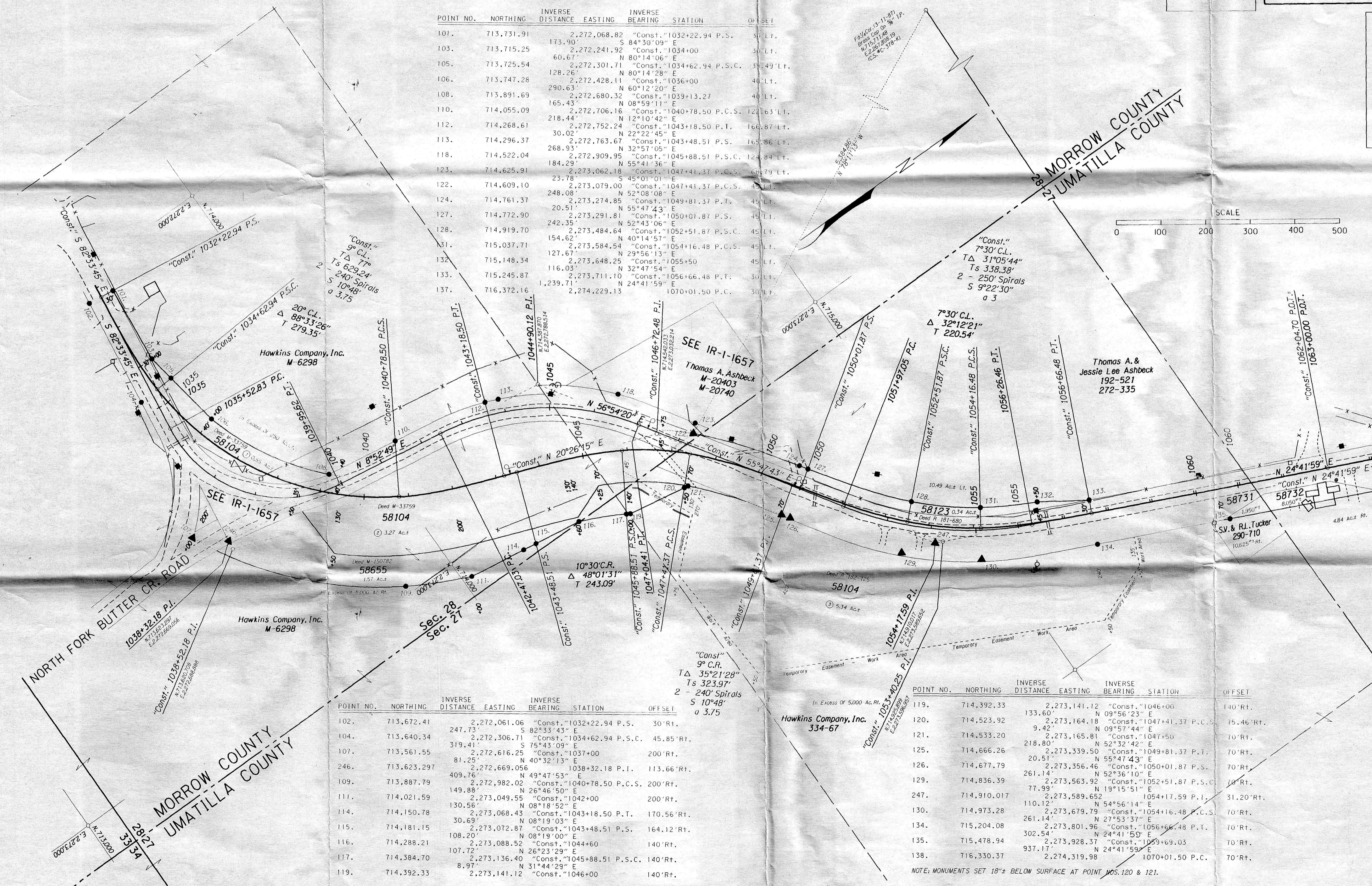
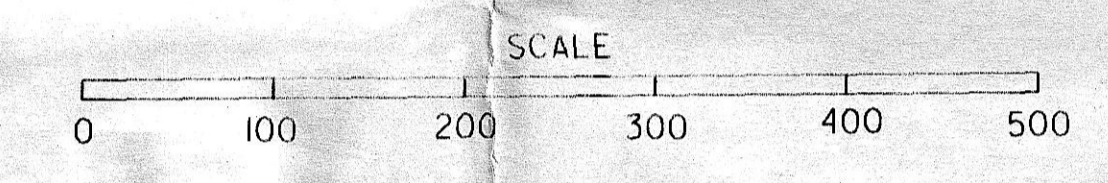
SURVEY FOR
OREGON STATE HIGHWAY DIVISION
**BUTTER CREEK JCT.-
OLD OREGON TRAIL HWY. SEC.**
LEXINGTON - ECHO HIGHWAY
MORROW & UMATILLA COUNTIES

SHEET
No. 2
TOTAL
SHEETS 16



J.X. WILSON
3012 ISLAND AVENUE
LAGRANDE, OREGON 97850

POINT NO.	NORTHING	INVERSE DISTANCE	EASTING	INVERSE BEARING	STATION	OFFSET
101.	713,731.91	2,272,068.82		"Const." 1032+22.94 P.S.	30' Lt.	
103.	713,715.25	173.90		S 84°30'09" E	30' Lt.	
105.	713,725.54	60.67		N 80°14'06" E		
106.	713,747.28	128.26		"Const." 1034+62.94 P.S.C.	39.49' Lt.	
108.	713,891.69	290.63		N 80°14'28" E	48' Lt.	
110.	714,055.09	2,272,428.11		"Const." 1036+00		
112.	714,268.61	290.63		N 60°12'20" E	48' Lt.	
113.	714,296.37	165.43		"Const." 1039+13.27		
118.	714,522.04	2,272,706.16		N 08°59'11" E		
123.	714,625.91	218.44		"Const." 1040+78.50 P.C.S.	122.63' Lt.	
124.	714,609.10	2,272,752.24		N 12°10'42" E		
127.	714,772.90	30.02		"Const." 1043+18.50 P.T.	166.87' Lt.	
128.	714,919.70	2,272,763.67		N 22°22'45" E		
131.	715,037.71	268.93		"Const." 1043+48.51 P.S.	165.86' Lt.	
132.	715,148.34	2,272,909.95		N 32°57'05" E		
133.	715,245.87	184.29		"Const." 1045+88.51 P.S.C.	124.84' Lt.	
137.	716,372.16	2,273,062.18		N 55°41'36" E		
		23.78		"Const." 1047+41.37 P.C.S.	68.79' Lt.	
		248.08		S 45°01'01" E		
		20.51		"Const." 1047+41.37 P.C.S.	45' Lt.	
		242.35		N 52°08'08" E		
		154.62		"Const." 1049+81.37 P.T.	45' Lt.	
		127.67		N 55°47'43" E		
		116.03		"Const." 1050+01.87 P.S.	45' Lt.	
		1,239.71		N 52°43'06" E		
		2,273,484.64		"Const." 1052+51.87 P.S.C.	45' Lt.	
		2,273,584.54		N 40°14'57" E		
		116.03		"Const." 1054+16.48 P.C.S.	45' Lt.	
		1,239.71		N 29°56'13" E		
		2,273,648.25		"Const." 1055+50	45' Lt.	
		2,273,711.10		N 32°47'54" E		
		2,274,229.13		"Const." 1056+66.48 P.T.	30' Lt.	
				N 24°41'59" E		
				1070+01.50 P.C.	30' Lt.	



POINT NO.	NORTHING	INVERSE DISTANCE	EASTING	INVERSE BEARING	STATION	OFFSET
102.	713,672.41	2,272,061.06		"Const." 1032+22.94 P.S.	30' Rt.	
104.	713,640.34	247.73		S 82°33'43" E		
107.	713,561.55	319.41		"Const." 1034+62.94 P.S.C.	45.85' Rt.	
246.	713,623.297	81.25		S 75°43'09" E	200' Rt.	
109.	713,887.79	2,272,616.25		"Const." 1037+00		
111.	714,021.59	409.76		N 40°32'13" E	100' Rt.	
114.	714,150.78	2,272,669.056		"Const." 1038+32.18 P.I.	113.66' Rt.	
115.	714,181.15	149.08		N 49°47'53" E		
116.	714,288.21	2,272,982.02		"Const." 1040+78.50 P.C.S.	200' Rt.	
117.	714,384.70	2,273,049.55		N 26°46'50" E		
119.	714,392.33	130.56		"Const." 1042+00	200' Rt.	
		2,273,068.43		N 08°18'52" E		
		108.20		"Const." 1043+18.50 P.T.	170.56' Rt.	
		107.72		N 08°19'03" E		
		8.97		"Const." 1043+48.51 P.S.	164.12' Rt.	
		2,273,072.87		N 08°19'00" E		
		2,273,088.52		"Const." 1044+60	140' Rt.	
		2,273,136.40		N 26°23'29" E		
		2,273,141.12		"Const." 1045+88.51 P.S.C.	140' Rt.	
				N 31°44'29" E		
				"Const." 1046+00	140' Rt.	

POINT NO.	NORTHING	INVERSE DISTANCE	EASTING	INVERSE BEARING	STATION	OFFSET
119.	714,392.33	2,273,141.12		"Const." 1046+00	140' Rt.	
120.	714,523.92	133.60		N 09°56'23" E		
121.	714,533.20	9.42		"Const." 1047+41.37 P.C.S.	75.46' Rt.	
125.	714,666.26	2,273,165.81		N 09°57'44" E	70' Rt.	
126.	714,677.79	218.80		"Const." 1047+50		
129.	714,836.39	2,273,339.50		N 52°32'42" E	70' Rt.	
130.	714,973.28	20.51		"Const." 1049+81.37 P.T.	70' Rt.	
134.	715,204.08	261.14		N 55°47'43" E		
135.	715,478.94	77.99		"Const." 1050+01.87 P.S.	70' Rt.	
138.	716,330.37	110.12		N 52°36'10" E		
		2,273,563.92		"Const." 1052+51.87 P.S.C.	70' Rt.	
		2,273,589.652		N 19°15'51" E		
		2,273,679.79		"Const." 1054+16.48 P.C.S.	70' Rt.	
		2,273,801.96		N 54°56'14" E		
		302.54		"Const." 1054+16.48 P.C.S.	70' Rt.	
		937.17		N 27°53'37" E		
		2,273,928.37		"Const." 1056+66.48 P.T.	70' Rt.	
		2,274,319.98		N 24°41'59" E		
				"Const." 1059+69.03	70' Rt.	
				N 24°41'59" E		
				1070+01.50 P.C.	70' Rt.	

NOTE: MONUMENTS SET 18"± BELOW SURFACE AT POINT NOS. 120 & 121.

RECEIVED BY
Morrow County Surveyor
Date 2/91
Rec'd By J.E.
No. D-906-E 677

23-Jan-1991

FILE: I370, I01BUTTERL88.S2A