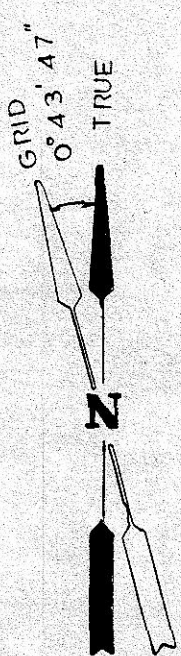
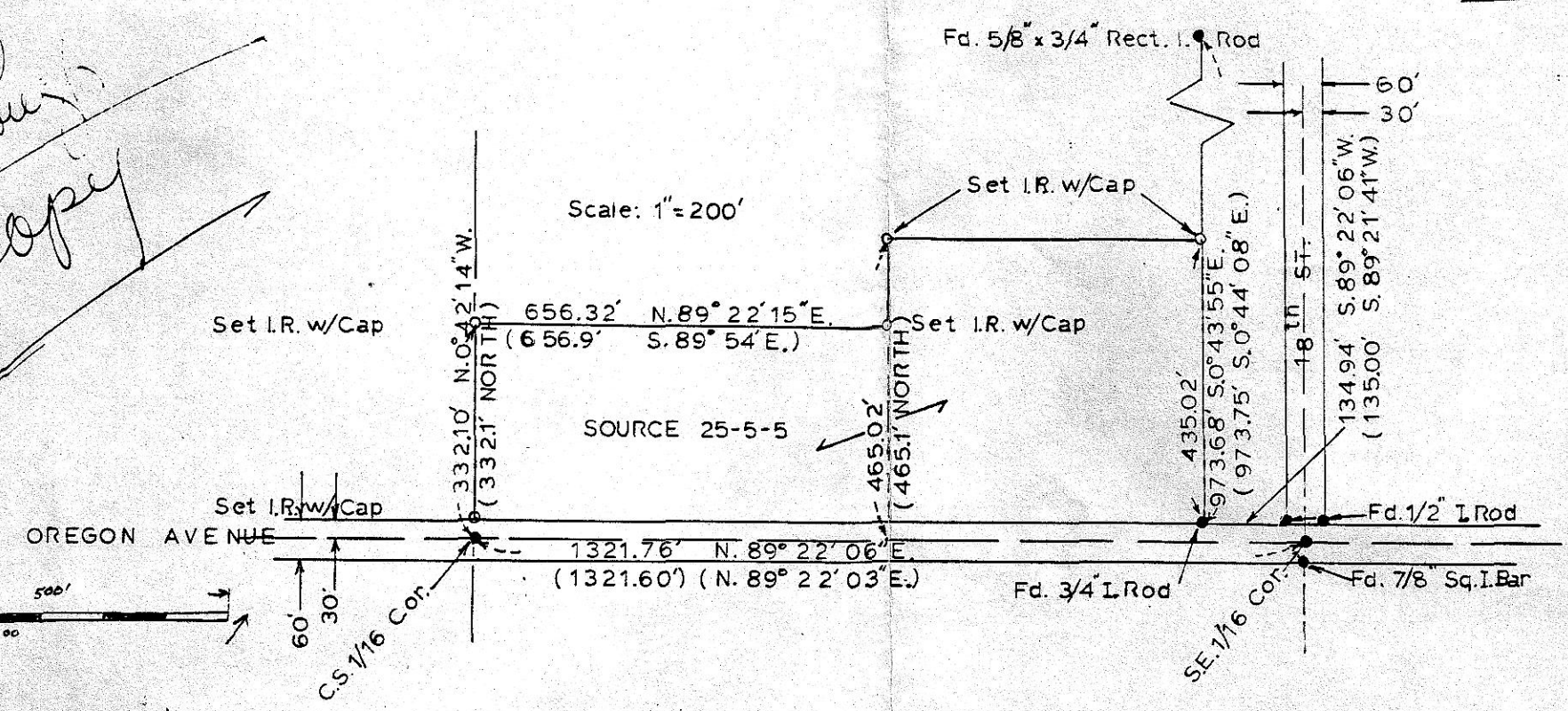
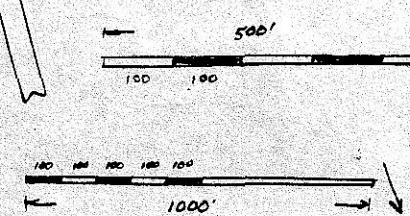


25-5-5



True Copy

Scale: 1" = 200'

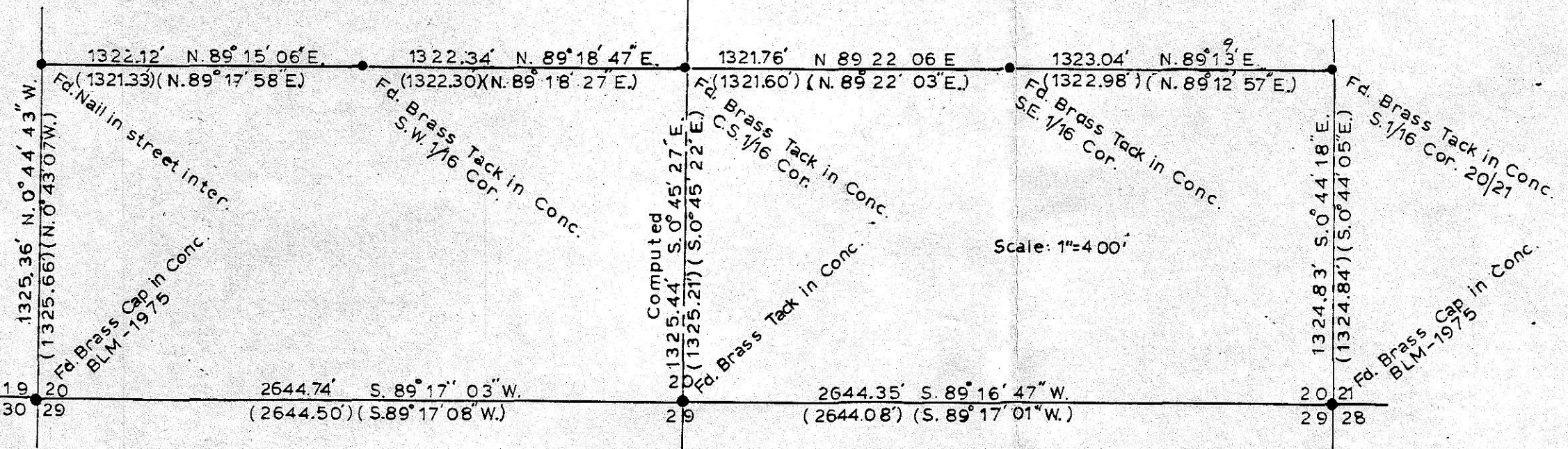


BASIS OF BEARING and SURVEY

This survey is based upon the Record Of Survey for the U.S. Army Corps Of Engineers done by Timberland - McCullough (James M. Griffis & K.M. Wightman II, P.L.S.) in 1983.

Record bearings have been converted from true to grid and distances are true ground distances. Additional info obtained from two Edwards surveys for F. Fredrickson dated 3-17-77 & 1-79 in Sec. 20 & 21 respectively.

*Ore State Hwy Divisie
P.O. Box 850
W. Grande, Oregon 97850*



- o Set 5/8" x 30" Iron Rod W/Aluminum Cap Stamped "Ore. State Hwy. Div."
- Pins / Caps Found
 - (a) Brass Tacks are from Worthington's 1906 Plat of Subdivision of Sec. 20.

(000) of Record

ORE. STATE HIGHWAY DIV.
SURVEY FOR OSHD MATERIAL SOURCE
25-5-5 LOCATED IN THE SE 1/4.
SEC. 20, T. 5 N., R. 27 E. W.M., MORROW CC
FEB. 1989

RECEIVED BY

Morrow County Surveyor

Date 2/91

Rec'd By DP

No. B-898-F 669