

**NARRATIVE:**

The purpose of this survey was to complete the re-identification of Section 25, T5N, R26E, W1M. The section was originally surveyed in 1860-61 by the GLO surveyors. In 1906 the OWR & U Land Company surveyed the irrigator area under the direction of C.W. Worthington. At that time 8 inch concrete monuments with a brass insert were set at most of the sixteenth corners and some of the section and quarter corners. Worthington did not file any of his plats, however copies were found in the Harmer Irrigation District Office basement and in the Morrow County Abstract and Title Company Office.

In 1915 the BLM surveyed Section 24, just to the North of this parcel and set a Brass Cap in the position they found for the concrete monument at the Northwest corner of Section 25. This is the only reference in the BLM notes to finding a concrete monument. In 1935, H. Tamblyn, then County Surveyor, filed the Irrigator plats in the County records with his name on them. The drawings are exactly like the copies of the Worthington drawing and either they were reproduced exactly by the same person or they were the Worthington drawings that Tamblyn somehow got a hold of and put his name on. No reference is made on the Tamblyn plats to the concrete monuments.

In the late seventies problems in Sections 24, 23 and 22 began showing up between the 1915 BLM Brass Caps and old fence and tree lines. A study commissioned by the US Army Corps of Engineers brought to light the Worthington concrete monuments. This study was done by Tom McCullough of McCullough-Bryant & Associates and I participated in his investigations. Subsequent to his study and using funds provided to the County Surveyors Office, we have found a number of these monuments in Sections 23 and 24, T5N, R26E and in Sections 19 and 30, T5N, R27E. Subsequent work by the Corps of Engineers in Section 20, T5N, R27E has found more concrete monuments.

Using the bearings and distances from the Worthington-Tamblyn drawings and working from found section corners, we have searched for and found nearly all the original monuments. Iron pins or Brass Caps have been set over the monuments to perpetuate their locations.

Bearings shown are True based upon ties to N.O.S. Station "Irrigator".

Find 1915 GLO Brass Cap, also find 1"x20" i.rod set by Cramer over conc. mon. i.rod is 0.5 W & 0.3 N of BC. In 1915 field notes by Gonong, state that a conc. mon 8" below surface was found at this location. This conc. mon was removed and a Brass Cap set in its place. It appears that the term removed meant that the conc. mon was placed alongside Brass Cap as it is located today.

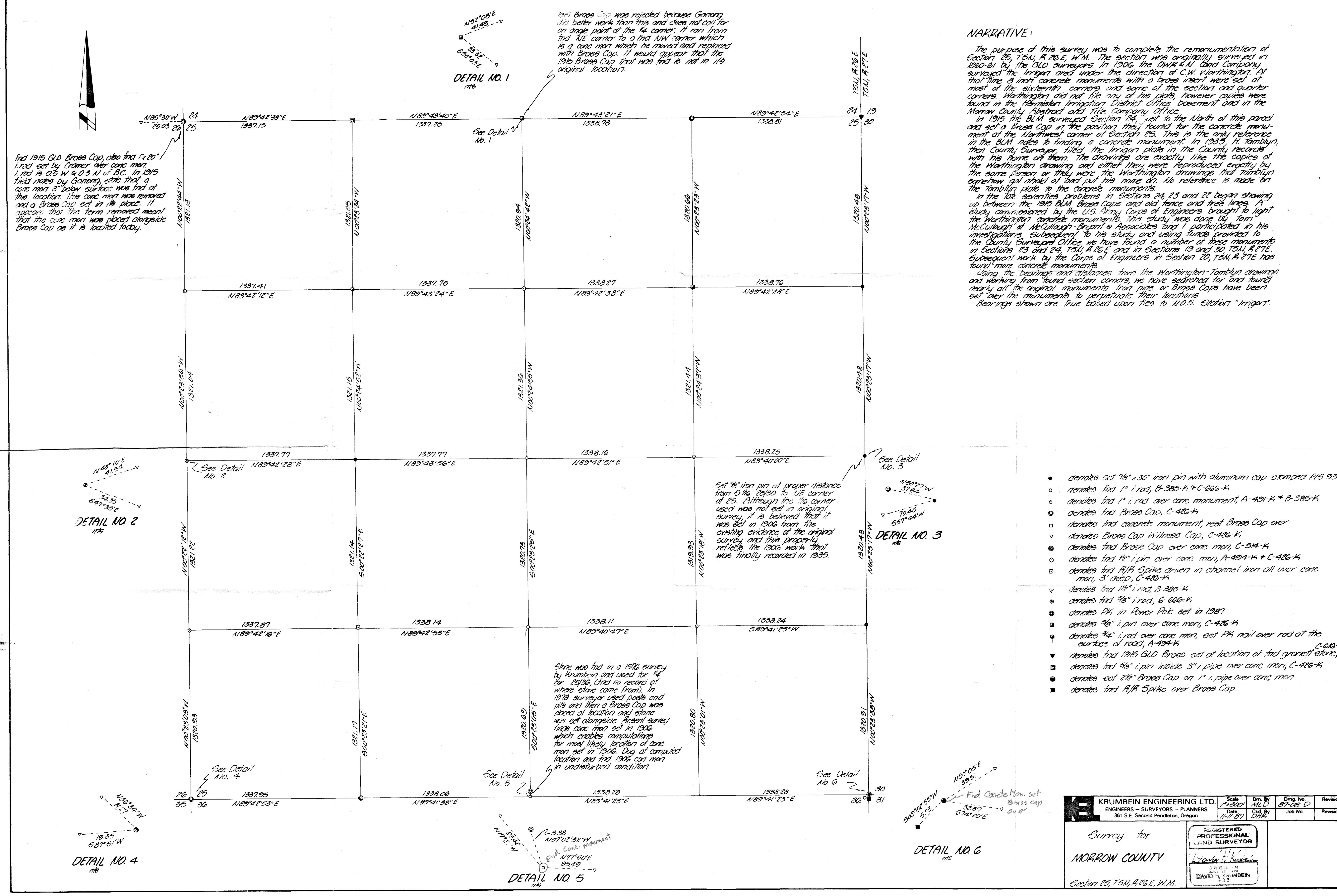
1915 Brass Cap was rejected because Gonong did better work than this and does not call for an angle point at the 1/4 corner. It ran from the NE corner to a find NW corner which is a conc. mon which he moved and replaced with Brass Cap. It would appear that the 1915 Brass Cap that was found is not in its original location.

Set 3/8" iron pin of proper distance from 2 1/2" to NE corner of 25. Although the 1/4 corner used was not set in original survey, it is believed that it was set in 1906 from the existing evidence of the original survey and this properly reflects the 1906 work that was finally recorded in 1935.

Stone was found in a 1976 survey by Krumben and used for 1/4 cor. 25/30, (find no record of where stone came from). In 1978 surveyor used posts and pits and then a Brass Cap was placed at location and stone was set alongside. Recent survey finds conc. mon set in 1906 which enables computations for most likely location of conc. mon set in 1906. Dug out computed location and find 1906 conc. mon in undisturbed condition.

- denotes set 3/8" x 30" iron pin with aluminum cap stamped PLS 933
- denotes find 1" i.rod, B-385-K + C-666-K
- denotes find 1" i.rod over conc. monument, A-491-K + B-385-K
- denotes find Brass Cap, C-426-K
- denotes find concrete monument, rest Brass Cap over
- ▽ denotes Brass Cap Witness Cap, C-426-K
- denotes find Brass Cap over conc. mon, C-5M-K
- denotes find 1/2" i.rod pin over conc. mon, A-494-K + C-426-K
- denotes find R/R Spike driven in channel iron all over conc. mon, 3" deep, C-426-K
- ▽ denotes find 1 1/2" i.rod, B-395-K
- denotes find 3/8" i.rod, 6-666-K
- denotes PK in Power Pole set in 1987
- denotes 3/8" i.rod pin over conc. mon, C-426-K
- denotes find 3/4" i.rod over conc. mon, set PK nail over rod at the surface of road, A-494-K
- ▽ denotes find 1915 GLO Brass set at location of find granite stone, C-616-K
- denotes find 3/8" i.rod inside 3" i.rod pipe over conc. mon, C-426-K
- denotes set 2 1/2" Brass Cap on 1" i.rod pipe over conc. mon
- denotes find R/R Spike over Brass Cap

<b>KRUMBEIN ENGINEERING LTD.</b> ENGINEERS - SURVEYORS - PLANNERS 381 S.E. Second Pendleton, Oregon	Scale 1"=300'	Drn. By MLD	Drng. No. 57-05 D	Revision 1
	Date 11-1-87	Old By DHA	Job No.	Revision 2
Survey for <b>MORROW COUNTY</b> Section 25, T5N, R26E, W1M.		REGISTERED PROFESSIONAL LAND SURVEYOR David H. Krumben DAVID H. KRUMBEIN 333		



DETAIL NO 2

DETAIL NO 4

DETAIL NO. 1

DETAIL NO. 3

DETAIL NO. 6

DETAIL NO. 5