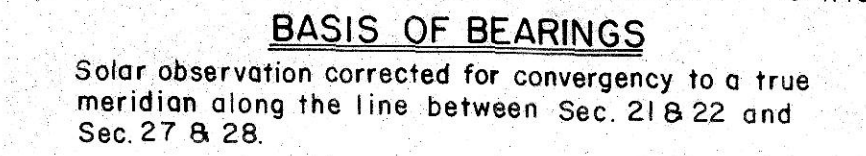


HERREN CADASTRAL SURVEY

Mag. Dec. = 20° E

LEGEND

- Set 30"x2 1/2" Aluminum Pipe with 2 1/2" Aluminum Cap
- Found Aluminum Cap Monument of Record
- ▬ Property Line Marked by Setting Steel Posts with Boundary Signs at Maximum Intervals of 300'. Posts Average 200' Intervals.
- () Record Bearing or Distance from Original G.L.O. Survey
- * () Record Bearing or Distance from Morrow County Survey No. 204-K By Donald L. Staebler, in 1968.

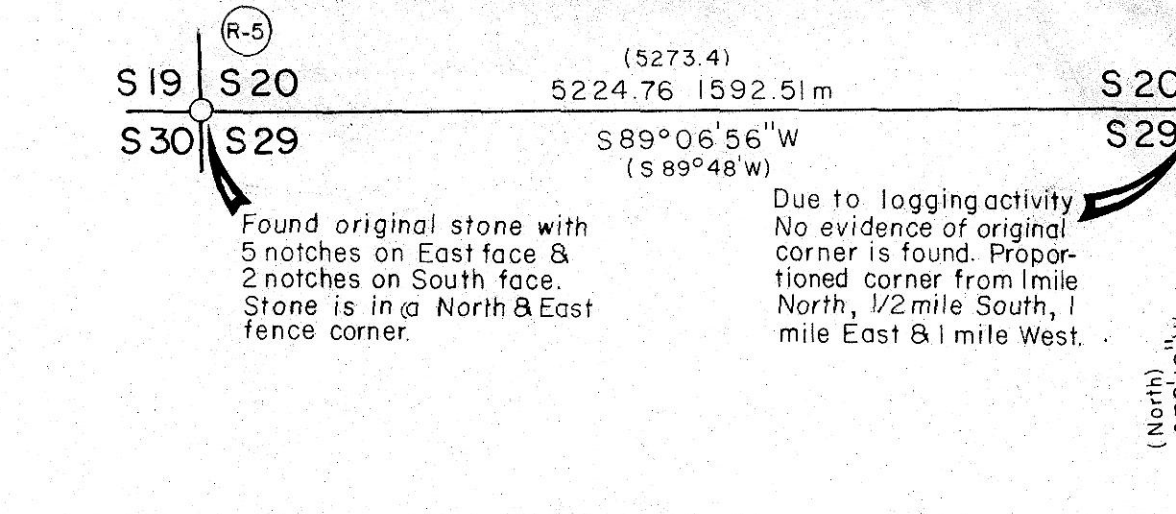


MONUMENTATION

See standard U.S.F.S. "INDEX" number, in circle, on the map. Monuments are stamped as shown below. Nailed Bearing Tree signs above blaze, warning signs on back & brass washers stamped "PLS 848" on blaze, above BT, on each tree. Set steel posts with warning & boundary signs, on line, 5 ft. each way from property corners, or a single post with warning sign within 5 ft. of controlling corners. Previously monumented corners found are maintained by setting appropriate posts with signs, nailed appropriate signs to bearing trees found & establishing new bearing trees or other accessories where required. See "Certified Record of Land Corner Monumentation" forms as on file in the Morrow Co. Surveyors office, for complete history, description of evidence found, monument set and accessories established at all corners set or maintained. (ALL DISTANCES ARE IN FEET)

N-5	T4S R28E S18 S20 1984 PLS 848	A Pine 14" dia. bears N40°W 82.6 Scribed T4S R28E S18 BT A Pine 16" dia. bears N80°E 42.4 Scribed T4S R28E S17 BT A Pine 12" dia. bears S34°E 39.2 Scribed T4S R28E S20 BT A Pine 12" dia. bears S 8°W 42.2 Scribed T4S R28E S19 BT	V-9	T4S R28E S29 S32 1984 PLS 848	A Tamarack 16" dia. bears N73°W 38.4 Scribed T4S R28E S29 BT A Fir 8" dia. bears N45°E 24.5 Scribed T4S R28E S28 BT A Tamarack 14" dia. bears S50°E 42.0 Scribed T4S R28E S33 BT A Fir 15" dia. bears S53°W 19.6 Scribed T4S R28E S32 BT
R-5	T4S R28E S19 S20 1984 PLS 848	A Pine 12" dia. bears N55°W 32.6 Scribed T4S R28E S19 BT A Pine 10" dia. bears N63°E 23.6 Scribed T4S R28E S20 BT A Pine 10" dia. bears S11°E 32.5 Scribed T4S R28E S29 BT A Pine 14" dia. bears S36°W 25.5 Scribed T4S R28E S30 BT	V-11	T4S R28E S33 S34 1984 PLS 848	A Fir 9" dia. bears N60°E 10.7 Scribed 1/4 S28 BT A Fir 14" dia. bears S 8°W 9.6 Scribed 1/4 S33 BT
N-9	T4S R28E S20 S21 1984 PLS 848	A Fir 16" dia. bears N 6°W 29.6 Scribed T4S R28E S17 BT A Pine 14" dia. bears N80°E 30.4 Scribed T4S R28E S16 BT A Fir 12" dia. bears S 3°E 18.5 Scribed T4S R28E S21 BT A Fir 8" dia. bears S23°W 24.0 Scribed T4S R28E S20 BT	V-12	T4S R28E S33 S34 1984 PLS 848	A Fir 18" dia. bears N37°W 17.0 Scribed E1/6 S28 BT A Spruce 10" dia. bears S19°E 15.6 Scribed E1/6 S33 BT
N-11	T4S R28E S21 S22 1984 PLS 848	A Tamarack 12" dia. bears S32°W 32.5 Scribed 1/4 S21 BT A Spruce 12" dia. bears N50°E 5.4 Scribed 1/4 S16 BT	V-13	T4S R28E S33 S34 1984 PLS 848	A Fir 12" dia. bears N56°W 29.3 Scribed T4S R28E S28 BT A Tamarack 14" dia. bears N51°E 41.3 Scribed T4S R28E S27 BT A Tamarack 14" dia. bears S33°E 20.4 Scribed T4S R28E S34 BT A Fir 10" dia. bears S26°W 35.0 Scribed T4S R28E S33 BT
N-13	T4S R28E S21 S22 1984 PLS 848	A Fir 10" dia. bears N72°W 58.7 Scribed T4S R28E S16 BT A Fir 14" dia. bears N63°E 23.6 Scribed T4S R28E S20 BT A Tamarack 14" dia. bears S35°W 99.0 Scribed T4S R28E S21 BT A 5/8"x30" iron rod with plastic cap stamped PLS 848 & Guard post bears S28°E 2.6	U-13	T4S R28E S1/6 S28 S27 1984 PLS 848	A Spruce 20" dia. bears S25°W 13.4 Scribed S1/6 S28 BT A Spruce 8" dia. bears N1°E 13.0 Scribed S1/6 S27 BT
P-9	T4S R28E S20 S21 1984 PLS 848	A Fir 10" dia. bears S69°W 37.2 Scribed 1/4 S20 BT A Fir 10" dia. bears S40°E 12.9 Scribed 1/4 S21 BT	T-13	T4S R28E S28 S27 1984 PLS 848	A Fir 6" dia. bears N82°W 9.4 Scribed 1/4 S28 BT A Fir 7" dia. bears S37°E 14.5 Scribed 1/4 S27 BT
P-11	T4S R28E S21 S22 1984 PLS 848	A Fir 14" dia. bears S52°E 49.5 Scribed C1/4 S21 BT A Fir 10" dia. bears S30°W 11.2 Scribed C1/4 S21 BT	S-15	T4S R28E S1/6 S27 1984 PLS 848	A Pine 12" dia. bears N7°W 11.8 Scribed CN1/6 S27 BT A Pine 14" dia. bears S30°W 12.6 Scribed CN1/6 S27 BT
P-12	R28 S20 S21 1984 PLS 848	Set 5/8"x30" iron rod at corner position with plastic cap stamped PLS 848. From which, set aluminum monument for reference monument bears S06°25'W 50.0 ft. stamped as shown. A 5/8"x30" iron rod with plastic cap stamped PLS 848 and guard post bears N84°22'36"W 59.8 ft. E to 567+85 of the Hegner Hwy. bears S70°00'20"W 102.8 ft. A Pine 7" dia. bears S10°W approx. 50 ft. Scribed C-1/16 S21 BT	S-16	T4S R28E S27 S28 1984 PLS 848	A Pine 14" dia. bears S50°E 2.3 Scribed NE1/6 S27 BT A Pine 11" dia. bears N63°W 26.9 Scribed NE1/6 S27 BT
P-13	T4S R28E S21 S22 1984 PLS 848	A Fir 10" dia. bears S16°W 11.0 Scribed 1/4 S21 BT A Fir 8" dia. bears S87°E 18.2 Scribed 1/4 S22 BT	T-15	T4S R28E S27 S28 1984 PLS 848	A Lodge Pole Pine 12" dia. bears N17°E 11.1 Scribed C1/4 S27 BT A Lodge Pole Pine 12" dia. bears S12°E 22.2 Scribed C1/4 S27 BT 2" iron pipe set by Staebler in 1968 survey bears N3°36'14"E 12.89 ft. from true corner position.
Q-12	T4S R28E S21 S22 1984 PLS 848	A Spruce 12" dia. bears S42°W 37.8 Scribed SE1/6 S21 BT A Spruce 16" dia. bears N46°W 18.2 Scribed SE1/6 S21 BT	T-16	T4S R28E S27 S28 1984 PLS 848	A Fir 20" dia. bears N73°W 38.1 Scribed CE1/6 S27 BT A Pine 12" dia. bears S69°E 49.3 Scribed CE1/6 S27 BT
Q-13	T4S R28E S1/6 S21 S22 1984 PLS 848	A Pine 8" dia. bears N33°W 31.3 Scribed S1/6 S21 BT A Pine 12" dia. bears N40°E 26.8 Scribed S1/6 S22 BT	U-15	T4S R28E S1/6 S27 1984 PLS 848	A Fir 14" dia. bears N18°E 3.0 Scribed CS1/6 S27 BT A Spruce 7" dia. bears S12°W 10.6 Scribed CS1/6 S27 BT A 5/8" iron rod set by Staebler in 1968 survey bears S7°15'25"W 77.10 ft. from true corner position.
R-9	T4S R28E S20 S21 S29 S28 1984 PLS 848	A Pine 10" dia. bears N70°W 56.0 Scribed T4S R28E S20 BT A Pine 10" dia. bears N71°E 75.6 Scribed T4S R28E S21 BT A Pine 12" dia. bears S24°E 55.0 Scribed T4S R28E S28 BT A Pine 8" dia. bears S15°W 34.1 Scribed T4S R28E S29 BT	U-16	T4S R28E S27 S28 1984 PLS 848	A Pine 14" dia. bears S8°W 42.1 Scribed SE1/6 S27 BT A Fir 14" dia. bears N43°W 10.2 Scribed SE1/6 S27 BT
R-11	T4S R28E S21 S22 1984 PLS 848	A Fir 8" dia. bears N7°E 60.0 Scribed 1/4 S21 BT A Fir 6" dia. bears S32°W 27.0 Scribed 1/4 S28 BT	V-15	T4S R28E S34 S35 1984 PLS 848	Rescribed original BTs. A Pine 20" dia. bears N28°E 34.1 Scribed 1/4 S27 BT A Pine 36" dia. bears S44°W 28.2 Scribed 1/4 S34 BT
R-13	T4S R28E S21 S22 S28 S27 1984 PLS 848	A Fir 18" dia. bears N54°W 7.3 Scribed T4S R28E S21 BT A Fir 8" dia. bears N1°E 10.8 Scribed T4S R28E S22 BT A Fir 10" dia. bears S71°E 58.3 Scribed T4S R28E S27 BT A Fir 10" dia. bears S50°W 9.0 Scribed T4S R28E S28 BT	V-17	T4S R28E S27 S28 S34 S35 1984 PLS 848	A Pine 12" dia. bears N17°W 14.0 Scribed T4S R28E S27 BT A Fir 12" dia. bears N20°E 16.9 Scribed T4S R28E S28 BT A Fir 12" dia. bears S80°E 12.4 Scribed T4S R28E S35 BT A Fir 10" dia. bears S55°W 8.4 Scribed T4S R28E S34 BT
P-15	T4S R28E S22 S23 1984 PLS 848	A Pine 12" dia. bears N73°W 13.1 Scribed C1/4 S22 BT A Pine 6" dia. bears S10°E 7.6 Scribed C1/4 S22 BT	T-17	T4S R28E S27 S28 1984 PLS 848	A Fir 16" dia. bears N56°W 35.6 Scribed 1/4 S27 BT A Fir 16" dia. bears S78°E 9.7 Scribed 1/4 S26 BT
P-17	T4S R28E S22 S23 1984 PLS 848	A Pine 16" dia. bears N78°E 54.2 Scribed 1/4 S23 BT A Pine 20" dia. bears S38°W 44.3 Scribed 1/4 S22 BT	J-9	T4S R28E S29 S28 1984 PLS 848	A Tamarack 8" dia. bears N36°W 9.5 Scribed T4S R28E S8 BT A Fir 10" dia. bears N41°E 21.7 Scribed T4S R28E S9 BT A Fir 6" dia. bears S49°E 15.8 Scribed T4S R28E S16 BT A Fir 8" dia. bears S80°W 21.6 Scribed T4S R28E S17 BT
Q-14	T4S R28E S22 S23 1984 PLS 848	A Pine 23" dia. bears N53°W 21.5 Scribed SW1/6 S22 BT A Pine 20" dia. bears N43°E 29.1 Scribed SW1/6 S22 BT	R-14	T4S R28E S27 S28 1984 PLS 848	A Fir 12" dia. bears N67°W 9.2 Scribed W1/6 S22 BT A Fir 8" dia. bears S60°E 4.5 Scribed W1/6 S27 BT
R-15	T4S R28E S22 S23 1984 PLS 848	A Fir 12" dia. bears N4°E 11.2 Scribed 1/4 S22 BT A Fir 14" dia. bears S64°E 8.7 Scribed 1/4 S27 BT	T-9	T4S R28E S29 S28 1984 PLS 848	A Fir 10" dia. bears West 14.8 Scribed 1/4 S29 BT A Fir 10" dia. bears N65°E 13.5 Scribed 1/4 S28 BT

DETAIL, SPRING BRANCH CALL SCALE 1"=100'



DESCRIPTION OF PARCELS

(See Corresponding Letter on Map)

A-	NW 1/4 SE 1/4	Sec. 21 - Pvt.	40.55 ac.
B-	NE 1/4 SE 1/4	Sec. 21 - USFS	40.51 ac.
C-	SW 1/4 SE 1/4	Sec. 21 - Pvt.	40.25 ac.
D-	SE 1/4 SE 1/4	Sec. 21 - Pvt.	40.21 ac.
E-	NW 1/4 SW 1/4	Sec. 22 - USFS	39.90 ac.
F-	NE 1/4 SW 1/4	Sec. 22 - USFS	39.77 ac.
G-	SW 1/4 SW 1/4	Sec. 22 - Pvt.	39.99 ac.
H-	SE 1/4 SW 1/4	Sec. 22 - USFS	39.86 ac.
I-	NW 1/4	Sec. 27 - Pvt.	154.37 ac.
J-	NW 1/4 NE 1/4	Sec. 27 - USFS	39.13 ac.
K-	NE 1/4 NE 1/4	Sec. 27 - USFS	38.98 ac.
L-	SW 1/4 NE 1/4	Sec. 27 - Pvt.	39.34 ac.
M-	SE 1/4 NE 1/4	Sec. 27 - USFS	39.19 ac.
N-	N 1/2 SW 1/4	Sec. 27 - Pvt.	74.51 ac.
O-	NW 1/4 SE 1/4	Sec. 27 - Pvt.	39.28 ac.
P-	NE 1/4 SE 1/4	Sec. 27 - USFS	39.65 ac.
Q-	S 1/2 SW 1/4	Sec. 27 - USFS	77.74 ac.
R-	SW 1/4 SE 1/4	Sec. 27 - USFS	39.42 ac.
S-	SE 1/4 SE 1/4	Sec. 27 - USFS	39.80 ac.

NARRATIVE

Survey is performed under contract, for the Umatilla National Forest, the purpose of which is the location & marking of the Forest Boundary.

In order to accomplish this it is necessary to re-trace sections 21, 22, 27 & 28. Because of corners lost to logging, road construction & fencing, the survey was extended around Section 20, so that controlling corners could be re-established along the line between Sec. 20 & 21. In the retracement of Section 28, that section is found to be grossly distorted, indicating that the North & South lines of the section were probably measured & the 1/4 corners between Secs. 29/28 & Secs. 28/27 then set by rough measure, southerly, setting those corners on a single run line, with no closure. After the East 1/4 corner of Sec. 28 is authenticated (see map) a pattern is developed & the West 1/4 cor. of Sec. 28 is found. This pattern also conforms with the S.W. corner of Section 28, as found by H. Tamblin, in 1938 (see History & Map).

In the subdivision of Section 27 all the exterior corners are found, these corners include the same corners as located and shown by Donald L. Staebler on his map (Morrow County Survey No. 204-K). The measurements along the Westerly line of Section 27 conform reasonably well with the measurements of this survey however other measurements in the section show excessive error, therefore the monuments found at the C-1/4 B-C-S-1/16 Section 27 are not accepted. (In telephone conversation with Staebler, he stated to me that the traverse lines run to tie the N,S & E 1/4 corners were not run in closed loops.)

The subdivision of Sections 21 & 22 is routine, after locating the exterior corners.

All retracement, re-establishment, restoration, establishment, subdivision & monumentation is carried out in conformance with the pertinent provisions of the 1973 edition of the "Bureau of Land Management, Manual of Surveying Instructions."

Positional control is provided by a closed traverse network. LIETZ SDM 3-E Total Station Electronic Distance Measuring Equipment & HP-86B Computer System are used to obtain the measurements & perform the computations. Field notes & computations are on file in the office of "Ferguson Surveying & Engineering" Mt. Vernon, Oregon.

I, Douglas M. Ferguson, Registered Professional Land Surveyor in the State of Oregon, hereby certify that this plat, notes and records hereon or attached are a correct representation of the survey I performed during Oct. 1983 & July-Aug. 1984, for the U.S. Forest Service, in accordance with the statutes of the State of Oregon and the articles of my Contract No. 53-04R3-01360.

Douglas M. Ferguson, Or. PLS 848

HISTORY

The West Three tiers of Sections, T. 4 S., R. 28 E., including the East, boundaries of the sections were originally surveyed by Z. F. Moody, under "General Land Office" Contract No. 184, May, 1873.

The East Three tiers of Sections, T. 4 S., R. 28 E., excluding the West boundaries of those sections, were originally surveyed by Frank W. Campbell, under "General Land Office" Contract No. 507, Oct., 1884.

In Nov. & Dec., 1937, "Morrow County Surveyor" H. Tamblin, found the corner to Sec. 25/30/31/36, the corner to Sec. 26/29/32/33, the 1/4 corner 30/29 and the 1/4 corner 31/32, then reestablished the corner to 29/30/31/32, the 1/4 corner 29/32 and the 1/4 corner 30/31, by proportionate measurement. All in T. 4 S., R. 28 E..

In June & Oct., 1968, Donald L. Staebler, subdivided Section 27, T. 4 S., R. 28 E., locating the N. 1/2 of that section and locating several properties within that parcel. See Map of Survey No. 204-K, as on file in the office of the Morrow County Surveyor.

In 1982, the N. 1/4 Sec. 22, the Cor. to Sec. 14/15/22/23 & the Cor. to Sec. 22/23/26/27 T4S, R28E were re-monumented by the B.L.M. from original evidence.

see monumentation sheets
Co Nos 750-K to 799-K

RECEIVED BY
Morrow County Surveyor
Date 1-10-86
Rec'd By DLD
No. D-802-K-652

REGISTERED PROFESSIONAL LAND SURVEYOR

DOUGLAS M. FERGUSON 348

FERGUSON SURVEYING & ENGINEERING
MT. VERNON, OR.

Map of Survey
THE RETRACEMENT OF SEC. 28 AND THE SUBDIVISION OF SECTIONS 21, 22 & 27, T. 4 S., R. 28 E. W. M.

MORROW COUNTY, OREGON

FOR: Umatilla National Forest BY: Douglas M. Ferguson

APPROVED June-85
DATE: Aug., 1984 DRAWN BY: J.D. Brinton SCALE: 1"=1000'