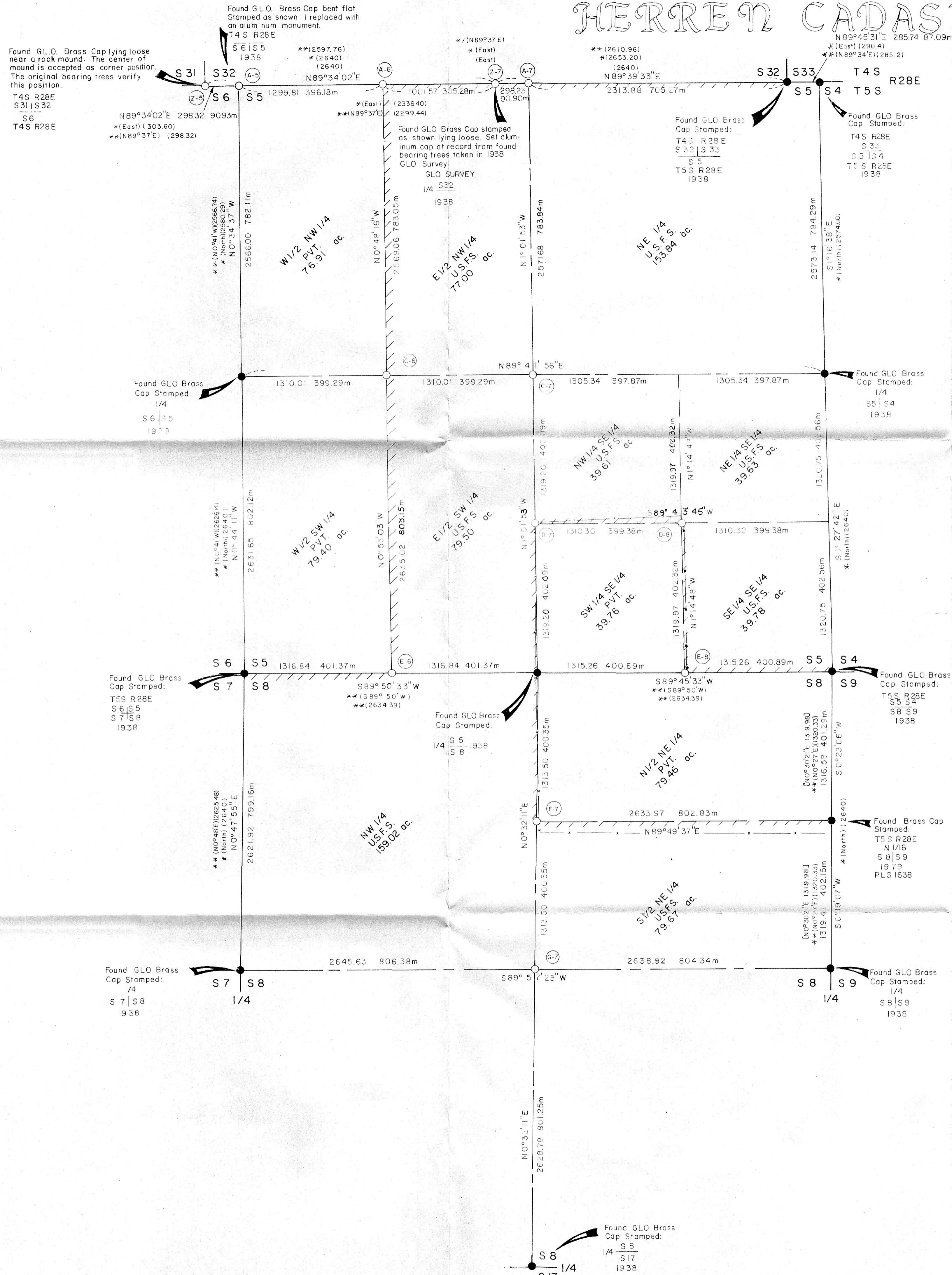


# HERREN CADASTRAL SURVEY



## LEGEND

- Set 2-1/2" 30 Aluminum Pipe with 2-1/2" Aluminum Cap
- Found Brass Cap Monument of Record
- //// Property Line Marked by setting steel posts with boundary signs at maximum intervals of 500'. Posts average 200'.
- ( ) Record Bearing or Distance from G.L.O. Survey by Moody in, 1873
- \* ( ) Record Bearing or Distance from G.L.O. Survey by Sanderson in, 1881 & 1882
- \*\* ( ) Record Bearing or Distance from G.L.O. Survey by Carter in 1938.
- [ ] Record Bearing or Distance from Survey by T. Hamby, PLS 1638, in, 1979
- Fence (private timber cut to fence)
- Cut Line

## MONUMENTATION

See standard U.S.F.S. "INDEX" Number, in circle, on the map. Monuments are stamped as shown below. Nailed Bearing Tree signs above blaze, warning signs on back & brass washers stamped "PLS 848" on blaze, above BT scribe, on each tree. Set steel posts with warning & boundary signs, on line, 5 ft. each way from property corners, or a single post with warning sign within 5 ft. of controlling corners. Previously monumented corners found are maintained by setting appropriate posts with signs, nailed appropriate signs to bearing trees found & establishing new bearing trees or other accessories where required. See "Certified Record of Land Corner Monumentation" forms as on file in the Morrow Co. Surveyors Office, for complete history, description of evidence found, monument set and accessories established at all corners set or maintained.

(Z-5)	T4 S R28 E S31   S32 T5 S R28 E S6 1984 PLS 848	Rescribed both original bearing trees from 1938 G.L.O. Resurvey: A Pine 16" dia. bears N38°W 35.6 ft., Scribed T4 S R28 E S31 BT A Pine 20" dia. bears N28°E 31.0 ft., Scribed T4 S R28 E S32 BT	(C-7)	T5 S R28 E C S1   S5 C 1984 PLS 848	A Fir 12" dia. bears N23°W 212 ft., Scribed CS 1/16 S5 BT A Fir 12" dia. bears N51°E 23.9 ft., Scribed CS 1/16 S5 BT
(A-5)	T4 S R28 E S6   S5 T5 S R28 E S5   S4 1984 PLS 848	Rescribed original bearing tree from 1938 G.L.O. Resurvey: A Fir 24" dia. bears S42°W 7.7 ft., Scribed T5 S R28 E S6 BT New bearing tree: A Fir 18" dia. bears S22°E 53.7 ft., Scribed T5 S R28 E S5 BT	(D-8)	T5 S R28 E SE 1/6 S5 1984 PLS 848	A Fir 10" dia. bears N70°W 96 ft., Scribed SE 1/6 S5 BT A Fir 8" dia. bears S57°E 95 ft., Scribed SE 1/6 S5 BT
(A-6)	T4 S R28 E W 1/6 S5 T5 S R28 E S5   S4 1984 PLS 848	A Fir 6" dia. bears S65°W 10.6 ft., Scribed W 1/6 S5 BT A Fir 14" dia. bears S63°E 6.3 ft., Scribed W 1/6 S5 BT	(E-9)	T5 S R28 E E 1/6 S5 S5 1984 PLS 848	A Lodge Pole Pine 8" dia. bears N73°E 35.6 ft., Scribed E 1/6 S5 BT A Lodge Pole Pine 12" dia. bears S17°W 42.7 ft., Scribed E 1/6 S8 BT
(Z-7)	T4 S R28 E 1/4 S32 1984 PLS 848	A Fir 21" dia. bears N17°W 52.3 ft., Scribed 1/4 S32 BT	(E-6)	T5 S R28 E S5 W 1/6 S5 S5 1984 PLS 848	A Tamarack 18" dia. bears N13°W 24.6 ft., Scribed W 1/6 S5 BT A Lodge Pole Pine 10" dia. bears S87°E 25.7 ft., Scribed W 1/6 S8 BT
(A-7)	T4 S R28 E 1/4 S5 T5 S R28 E S5   S4 S8   S9 1984 PLS 848	Rescribed original bearing tree from 1938 G.L.O. Resurvey: A Pine 26" dia. bears N62°E 23.1 ft., Scribed 1/4 S32 BT	(F-7)	T5 S R28 E C N 1/6 S8 C 1984 PLS 848	A Tamarack 6" dia. bears S38°W 10.5 ft., Scribed CN 1/6 S8 BT A Tamarack 6" dia. bears N19°E 3.9 ft., Scribed CN 1/6 S8 BT
(C-6)	T5 S R28 E C W 1/6 S5 C S5 - C 1984 PLS 848	A Fir 10" dia. bears S60°W 26.6 ft., Scribed CW 1/6 S5 BT A Fir 6" dia. bears N53°E 2.3 ft., Scribed CW 1/6 S5 BT	(G-7)	T5 S R28 E C 1/4 S8 1984 PLS 848	A Fir 10" dia. bears N35°W 26.8 ft., Scribed C 1/4 S8 BT A Fir 20" dia. bears S8°W 34.0 ft., Scribed C 1/4 S8 BT
(C-7)	T5 S R28 E C 1/4 S5 1984 PLS 848	A Fir 20" dia. bears S4°E 15.5 ft., Scribed C 1/4 S5 BT A Pine 18" dia. bears S55°W 43.2 ft., Scribed C 1/4 S5 BT			

## NARRATIVE

Survey is performed under contract, for the Umatilla National Forest, the purpose of which is the location & marking of the Forest Boundary.

In order to accomplish this it is necessary to subdivide Sections 5 & 8.

Monuments or evidence are found at all controlling corners as monumented by Leonard Carter, in 1938 & the N 1/16 cor Section 889 is found. The North 1/4 corner of Section 5, is established and the Sections are subdivided in a normal manner as required to monument and mark the Forest Boundary.

It should be noted that the corners along the line between T.485S are not standard and closing corners, but double corners originally run on a continuous line and retraced in that manner, establishing corners common to one township only.

All retracement, re-establishment, restoration, establishment, subdivision & monumentation is carried out in conformance with the pertinent provisions of the 1973 edition of the "Bureau of Land Management, Manual of Surveying Instructions".

Positional control is provided by a closed traverse network. LIETZ SDM 3-E Total Station Electronic Distance Measuring Equipment & HP-86B Computer System are used to obtain the measurements & perform the computations. Field notes & computations are on file in the office of Ferguson Surveying & Engineering, Mt. Vernon, Oregon.

I, Douglas M. Ferguson, Registered Professional Land Surveyor in the State of Oregon, hereby certify that this plat, notes and records hereon or attached are a correct representation of the survey I performed during Oct. 1983 & July-Aug. 1984, for the U.S. Forest Service, in accordance with the statutes of the State of Oregon and the articles of my Contract No. 53-04R3-01360.

Douglas M. Ferguson, Or. PLS 848

## HISTORY

The South line of T4S, R28E, was originally surveyed in 1873 by Zenos F. Moody, under General Land Office Contract No. 184. Moody surveyed from the Southeast Corner of the Township to the S.E. Cor. of Sec. 33, said T4S, R28E.

In 1881, Edward W. Sanderson, retraced the South line of T4S, R28E, running through corners as established by Moody in 1873 and establishing corners common to T5S, R28E. This work was performed under General Land Office Contract No. 417.

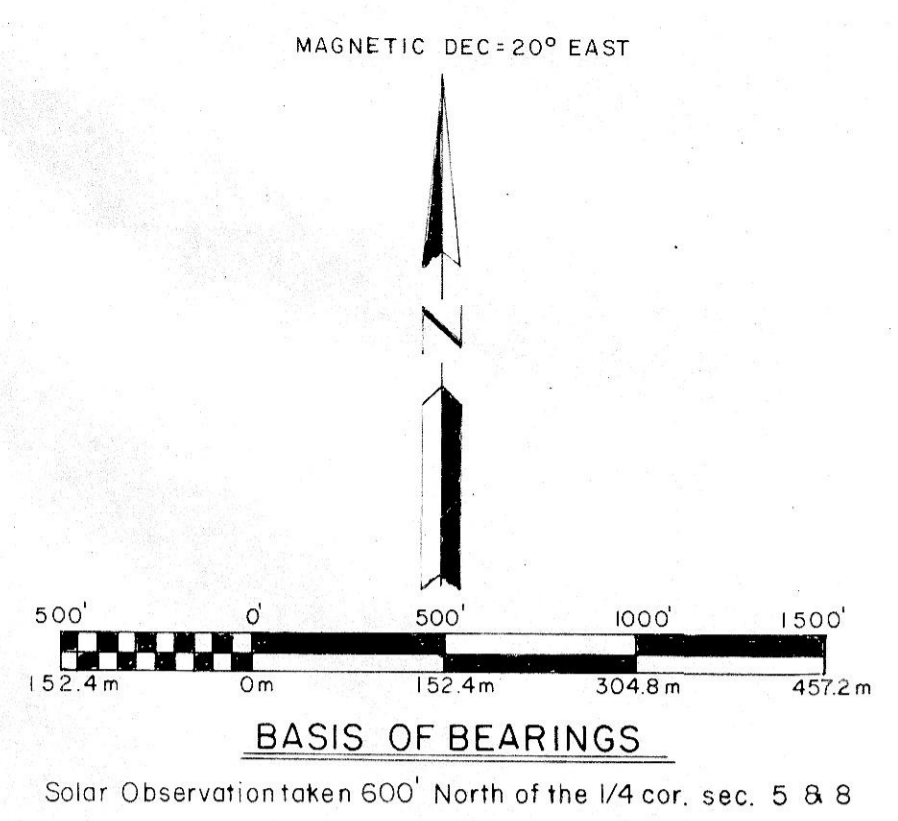
The Subdivision of T5S, R28E, was originally performed by Edward W. Sanderson, under General Land Office Contract No. 417, July & Aug. of 1882.

In 1938, Leonard Carter, Cadastral Engineer for the General Land Office, performed a dependent resurvey, whereby he monumented or re-established and monumented the line between T485S, R28E, and among others, the exterior Section Corners and 1/4 Corners of Sections 5 & 8, T5S, R28E.

In 1979, Terry E. Hamby, PLS 1638, established the North 1/16 Corner Between Sections 8 & 9, T5S, R28E, while subdividing Section 9 for the Umatilla National Forest.

See monumentation sheets, Co. Nos. 786-K to 749-K

1-10-80  
M.D.  
D-801-K-650



**FERGUSON SURVEYING & ENGINEERING**  
MT. VERNON, OR.  
Map of Survey

SUBDIVISION OF SECTIONS 5 & 8, T. 5 S., R. 28 E. W.M.  
MORROW COUNTY, OREGON

FOR: Umatilla National Forest BY: Douglas M. Ferguson  
DATE: Aug 1984 DRAWN BY: J.D. Brinton SCALE: 1" = 500'

D-801-K-650