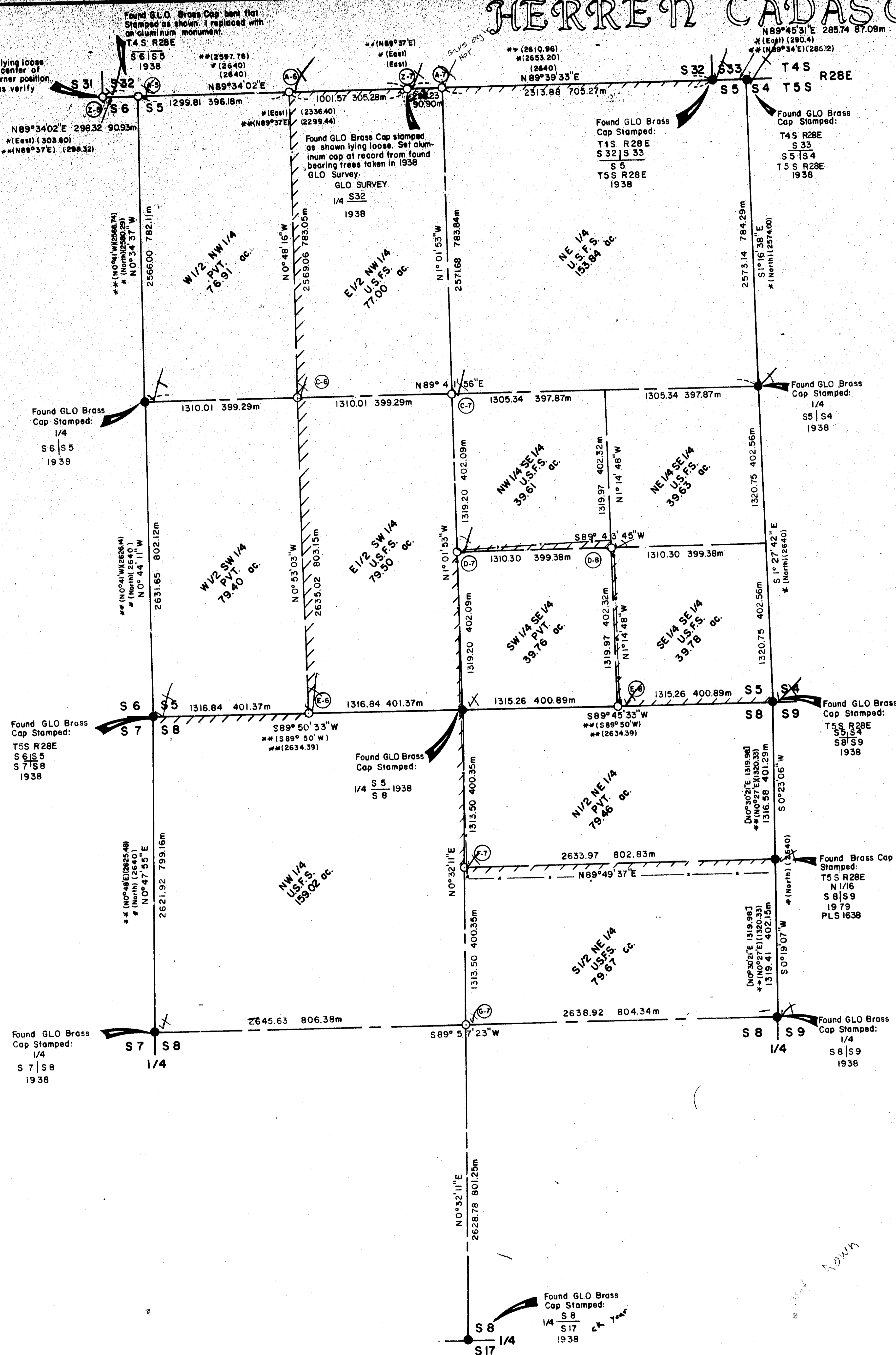


HERREN CADASTRAL SURVEY



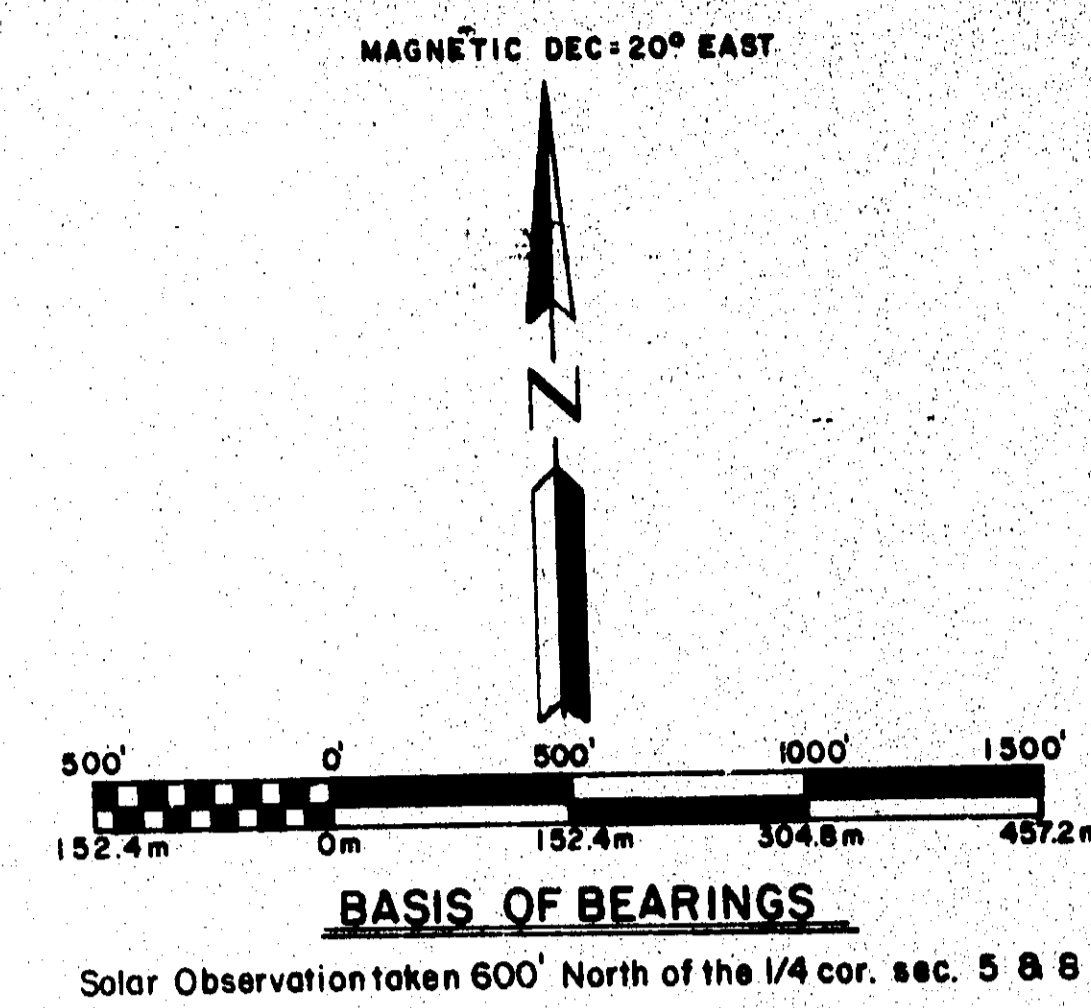
LEGEND

- Set 2-1/2" 30 Aluminum Pipe with 2-1/2" Aluminum Cap
- Found Brass Cap Monument of Record
- Property Line Marked by setting steel posts with boundary signs at maximum intervals of 300'. Posts average 200'.
- () Record Bearing or Distance from GLO Survey by Moody in, 1873
- * () Record Bearing or Distance from GLO Survey by Sanderson in, 1881 & 1882
- ** () Record Bearing or Distance from G.L.O. Survey by Carter in 1938.
- ⊠ () Record Bearing or Distance from Survey by T. Hamby, PLS 1638, in, 1979
- Fence (private timber cut to fence)
- Cut Line

MONUMENTATION

See standard U.S.F.S. "INDEX" Number, in circle, on the map. Monuments are stamped as shown below. Nailed Bearing Tree signs above 5 ft. from BT scribe, on each tree. back & brass washers stamped "PLS 848" on plate, above BT scribe, on each tree. Set steel posts with warning & boundary signs, on line, 5 ft. each way from property corners, or a single post with warning sign within 5 ft. of controlling corners. Previously monumented corners found are maintained by setting appropriate posts with signs, nailed appropriate signs to bearing trees found & establishing new bearing trees or other accessories where required. See "Certified Record of Land Corner Monumentation" forms as on file in the Morrow Co. Surveyors Office, for complete history, description of evidence found, monument set and accessories established at all corners set or maintained.

- ① T4S R28E S31 S32 T5S R28E S6 S8 PLS 848
Rescribed both original bearing trees from 1938 G.L.O. Resurvey:
A Fir 16" dia. bears N38°W 35.6 ft., Scribed T4S R28E S31 BT
A Pine 20" dia. bears N28°E 31.0 ft., Scribed T4S R28E S32 BT
- ② T4S R28E S6 S8 PLS 848
Rescribed original bearing tree from 1938 G.L.O. Resurvey:
A Fir 24" dia. bears S42°W 7.7 ft., Scribed T5S R28E S6 BT
New bearing tree:
A Fir 18" dia. bears S22°E 53.7 ft., Scribed T5S R28E S5 BT
- ③ T4S R28E S6 S8 PLS 848
A Fir 6" dia. bears S65°W 10.6 ft., Scribed W/16 S5 BT
A Fir 14" dia. bears S63°E 6.3 ft., Scribed W/16 S5 BT
- ④ T4S R28E S6 S8 PLS 848
A Fir 21" dia. bears N17°W 52.3 ft., Scribed 1/4 S32 BT
A Fir 24" dia. bears S42°W 7.7 ft., Scribed T5S R28E S6 BT
- ⑤ T4S R28E S6 S8 PLS 848
Rescribed original bearing tree from 1938 G.L.O. Resurvey:
A Fir 26" dia. bears N62°E 23.1 ft., Scribed 1/4 S32 BT
- ⑥ T4S R28E S6 S8 PLS 848
A Fir 12" dia. bears S30°E 36.4 ft., Scribed 1/4 S5 BT
A Fir 14" dia. bears S10°W 32.2 ft., Scribed 1/4 S5 BT
- ⑦ T5S R28E S6 S8 PLS 848
A Fir 10" dia. bears S60°W 26.6 ft., Scribed CW 1/16 S5 BT
A Fir 6" dia. bears N53°E 2.3 ft., Scribed CW 1/16 S5 BT
- ⑧ T5S R28E S6 S8 PLS 848
A Fir 20" dia. bears S4°E 15.5 ft., Scribed C 1/4 S5 BT
A Pine 18" dia. bears S55°W 43.2 ft., Scribed C 1/4 S5 BT



NARRATIVE

Survey is performed under contract, for the Umatilla National Forest, the purpose of which is the location & marking of the Forest Boundary.

In order to accomplish this it is necessary to subdivide Sections 5 & 8. Monuments or evidence are found at all controlling corners as monumented by Leonard Carter, in 1938 & the N 1/16 cor. Section 8 & 9 is found. The North 1/4 corner of Section 5, is established and the Sections are subdivided in a normal manner as required to monument and mark the Forest Boundary.

It should be noted that the corners along the line between T.485S are not standard and closing corners, but double corners originally run on a continuous line and retraced in that manner, establishing corners common to one township only.

All retracement, re-establishment, restoration, establishment, subdivision & monumentation is carried out in conformance with the pertinent provisions of the 1973 edition of the "Bureau of Land Management, Manual of Surveying Instructions". Positional control is provided by a closed traverse network LIETZ SDM 3-E Total Station Electronic Distance Measuring Equipment & HP-868 Computer System are used to obtain the measurements & perform the computations. Field notes & computations are on file in the office of Ferguson Surveying & Engineering, Mt. Vernon, Oregon.

I, Douglas M. Ferguson, Registered Professional Land Surveyor in the State of Oregon hereby certify that this plot, notes and records hereon or attached are a correct representation of the survey I performed during Oct. 1983 & July-Aug. 1984, for the U.S. Forest Service, in accordance with the statutes of the State of Oregon and the articles of my Contract No. 53-04R3-01360 Douglas M. Ferguson, Or. PLS 848

HISTORY

The South line of T4S, R28E, was originally surveyed in 1873 by Zenos F. Moody, under General Land Office Contract No. 184. Moody surveyed from the Southeast Corner of the Township to the S.E. Cor. of Sec. 33, said T4S, R28E.

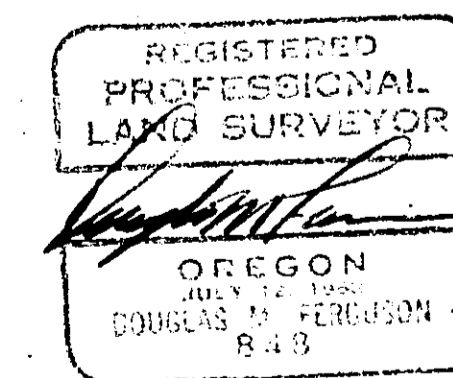
In 1881, Edward W. Sanderson, retraced the South line of T.4S, R28E, running through corners as established by Moody in 1873 and establishing corners common to T.5S, R28E. This work was performed under General Land Office Contract No. 417.

The subdivision of T.5S, R28E, was originally performed by Edward W. Sanderson, under General Land Office Contract No. 417, July & Aug. of 1882.

In 1938, Leonard Carter, Cadastral Engineer for the General Land Office, performed a dependent resurvey, whereby he remonumented or re-established and monumented the line between T.485S, R28E, and among others, the exterior Section Corners and 1/4 Corners of Sections 5 & 8, T.5S, R28E.

In 1979, Terry E. Hamby, PLS 1638, established the North 1/16 Corner Between Sections 8 & 9 T.5S, R28E, while subdividing Section 9 for the Umatilla National Forest.

see monumentation sheets
on Nos 786-K to 749-K



RECEIVED BY
Morrow County Surveyor
Date 1-10-86
Rec'd by D.M.D.
No. D-801-K

REGISTERED PROFESSIONAL LAND SURVEYOR
DOUGLAS M. FERGUSON
OREGON

FERGUSON SURVEYING & ENGINEERING
MT. VERNON, OR.
Map of Survey

SUBDIVISION OF SECTIONS 5 & 8, T. 5 S., R. 28 E. W.M.
MORROW COUNTY, OREGON

FOR: Umatilla National Forest BY: Douglas M. Ferguson
DATE: Aug 1984 DRAWN BY: J.A. Briston SCALE: 1" = 500'

D-801-K-649