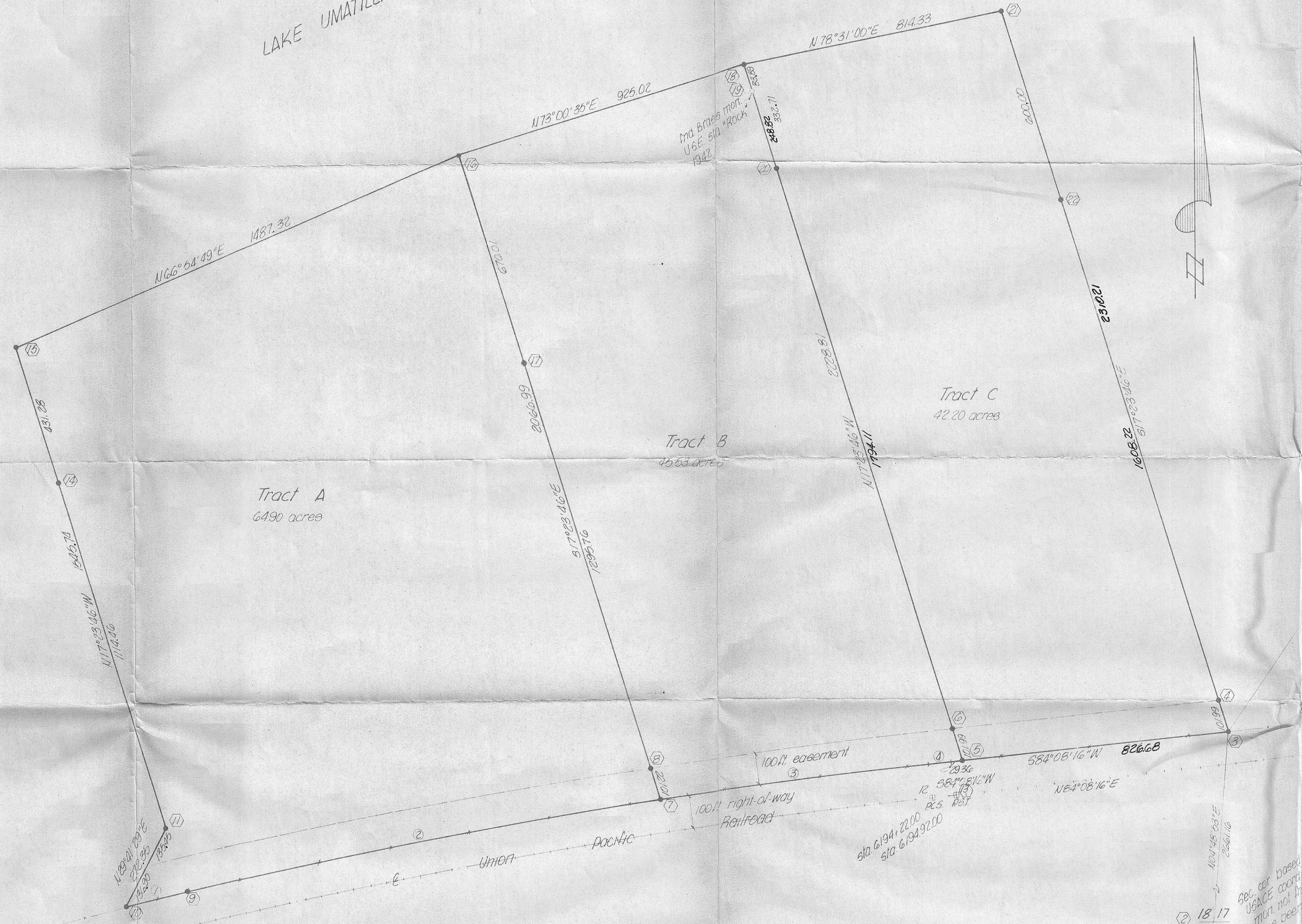


LAKE UMATILLA



Tract A
64.90 acres

Tract B
16.53 acres

Tract C
42.20 acres

- o denotes monument found as noted
- denotes 8/8 in iron pin w/ aluminum cap set, also a 2x4 guard post set
- # denotes 1 in iron cor. set by UPRR
- ① reference number to Oregon State Plane Coordinates North zone on attached sheet

CURVE DATA

No.	Radius	Arc	Chord	Chord Bearing
①	19201.17	200.00	200.00	S 76° 46' 43" W
②	19201.17	1490.53	1490.16	S 79° 18' 02" W
③	19201.17	841.06	840.98	S 82° 46' 46" W
④	spiral	69.89	69.88	S 81° 06' 44" W

NOTE

Bearings are based upon ties by Whitacre Engineering station "Rock to Crown" U.S.C. 1942 N 38° 21' 36" E.
Distances shown are true.
Grid Factor = 0.99993512

1/4 cor. 1 1/2 in. L pipe w/ brass screen & washer marked 1/4 S 17

RECEIVED BY
Morrow County Surveyor
Date November 24, 1980
Rec'd By M. Hughes
No. D-419-K-607

Revised December 23, 1980 MA
Revised December 18, 1980 MA
Revised November 23, 1980 MA

CR KRUMBEIN ENGINEERING CO
ENGINEERS - SURVEYORS - PLANNERS
221 S Main Pendleton Oregon

SCALE 1" = 220'
DATE Nov 20, 1980
DWN BY MA
CKD BY JLC
JOB NO. 80-176

David M. ...

Job No. 80-176