



BASIS OF BEARINGS
SOLAR OBSERVATION
Near N.W. corner Section 14

LEGEND

- Found original corner, or evidence of corner, set brass cap monument.
- ⊠ Found original corner, chiseled 6"x6" cross 1" deep in bedrock.
- Set brass cap monument at single proportion measure.
- Set brass cap monument, no previous record of corner.
- Set 3/8"x30" iron pin with attached plastic cap mkd. "B-G-A SURVEY MARKER"
- () Record bearing and distance from G.L.O. field notes.
- - - Fence
- Marked and blazed true line on property boundary

NOTE: All brass cap monuments are 1 1/2"x30" galvanized iron pipe with attached brass cap.

HISTORY OF SURVEYS

East boundary T.6 S., R.25 E., W.M. surveyed by U.S. Deputy Surveyor Edward W. Sanderson under Contract No. 368 dated Sept. 7, 1880.

Subdivision of T.6 S., R.25 E., W.M. surveyed by U.S. Deputy Surveyor Edward W. Sanderson under Contract No. 368 dated Sept. 7, 1880.

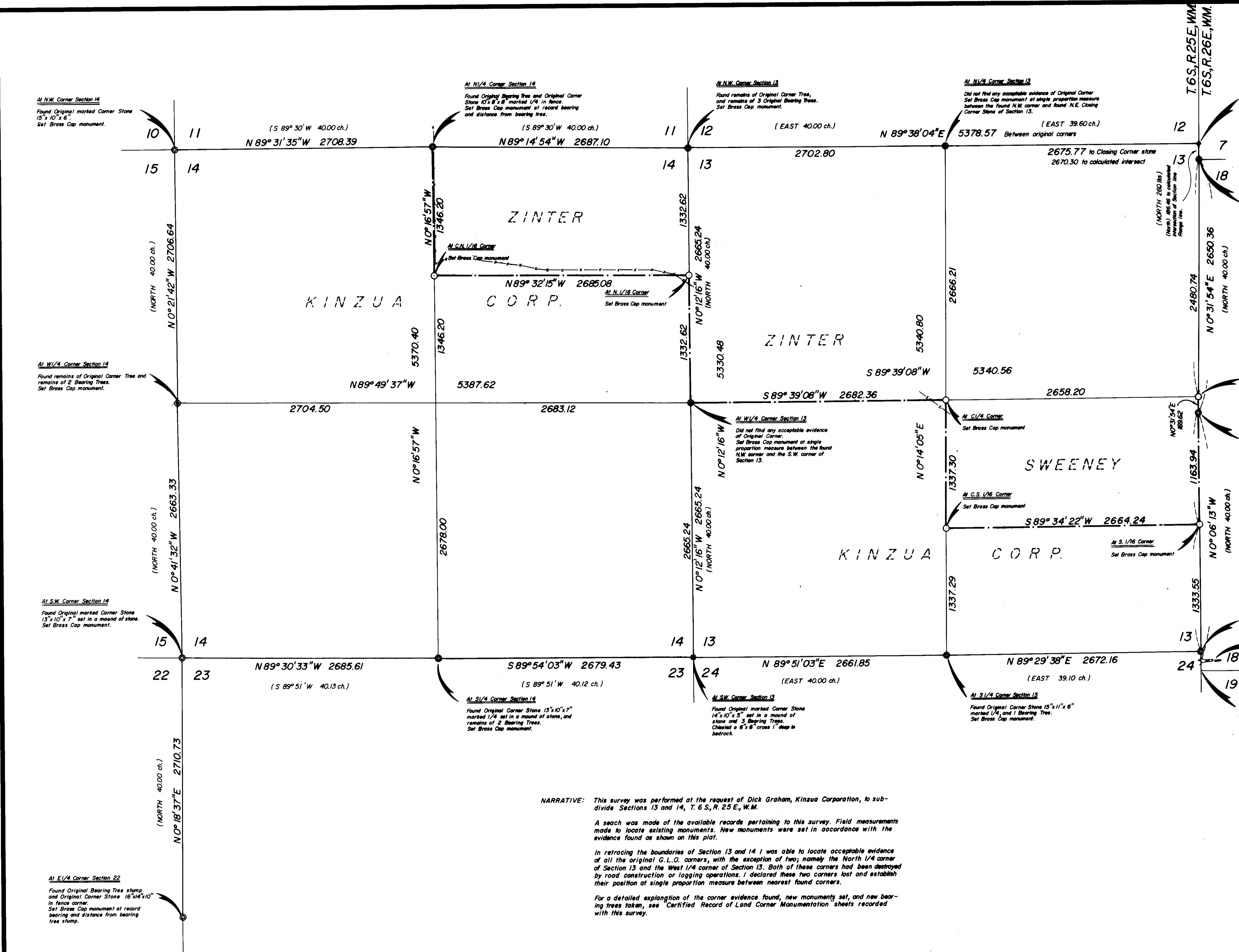
RECEIVED BY
Morrow County Surveyor
Date 11-10-80
Rec'd By W.J.S.
No. 583-K

REGISTERED
PROFESSIONAL
LAND SURVEYOR
Robert D. Bagett
OREGON
JULY 15, 1980
ROBERT D. BAGETT
595

BAGETT - GRIFFITH & ASSOCIATES
John Day, Oregon
Map of Survey

SUBDIVISION OF SECTIONS 13 AND 14, T.6 S., R.25 E., W.M.		
MORROW COUNTY, OREGON		
SURVEYED FOR	KINZUA CORPORATION	
SURVEYED BY	R.D.B. & G.L.E.	10/7-27/80
Scale: 1"=500'	Drawn by: G.L.E.	11/5/86/80

D-393-K-4676



NARRATIVE: This survey was performed at the request of Dick Graham, Kinzua Corporation, to sub-divide Sections 13 and 14, T.6 S., R.25 E., W.M.

A search was made of the available records pertaining to this survey. Field measurements made to locate existing monuments. New monuments were set in accordance with the evidence found as shown on this plat.

In retracing the boundaries of Section 13 and 14 I was able to locate acceptable evidence of all the original G.L.O. corners, with the exception of two; namely the North 1/4 corner of Section 13 and the West 1/4 corner of Section 13. Both of these corners had been destroyed by road construction or logging operations. I declared these two corners lost and establish their position at single proportion measure between nearest found corners.

For a detailed explanation of the corner evidence found, new monuments set, and new bearing trees taken, see 'Certified Record of Land Corner Monumentation' sheets recorded with this survey.

At N.W. Corner Section 14
Found Original marked Corner Stone 15"x10"x6"
Set Brass Cap monument.

At N1/4 Corner Section 14
Found Original Bearing Tree and Original Corner Stone 10"x8"x8" marked 1/4 in face.
Set Brass Cap monument at record bearing and distance from bearing tree.

At N.W. Corner Section 13
Found remains of Original Corner Tree, and remains of 3 Original Bearing Trees.
Set Brass Cap monument.

At N1/4 Corner Section 13
Did not find any acceptable evidence of Original Corner.
Set Brass Cap monument at single proportion measure between the found N.W. corner and found N.E. Closing Corner Stone of Section 13.

At N.E. Closing Corner Section 13
Found Original marked Corner Stone 14"x12"x5" set in a mound of stone and 2 unweared Original Bearing Trees.
Set iron pin under Closing Corner Stone. Did not determine exact intersection of Section line and Range line. Used Record North bearing from N.W. Corner Section 18 to calculate intersection for purpose of proportioning E1/4 Corner of Section 13.

At N.W. Corner Section 18
Found Original dirty marked Corner Stone 14"x14"x8" set in a mound of stone and 2 Original Bearing Trees.
Set Brass Cap monument.

At E1/4 Corner Section 13
This corner not previously established. Set Brass Cap monument on the Range Line at single proportion measure between the N.E. corner and the S.E. Corner of Section 13.

At W1/4 Corner Section 18
Found Original Corner Stone 16"x12"x5" set in a mound of stone.
Set Brass Cap monument.

At S.E. Closing Corner Section 13
Found Original marked Closing Corner Stone 14"x12"x5" set in a mound of stone at true intersection of Section line and Range line, and 2 Original Bearing Trees.
Set Brass Cap monument.

At a point S 0°06'13"E, 70 ft. from the Closing Corner Stone, found Original Line Tree on the Range Line. Assumed Line Tree as best available evidence of alignment of Range Line.

At S.W. Corner Section 18
Did not find Original Corner Stone. Found 3 Original Bearing Trees which are not compatible with the field note record. The bases of which would face a position which would be about 3 chains South of the Closing Corner. Located at 2 chains as called for in the Record.

At W1/4 Corner Section 14
Found remains of Original Corner Tree and remains of 2 Bearing Trees.
Set Brass Cap monument.

At W1/4 Corner Section 13
Did not find any acceptable evidence of Original Corner.
Set Brass Cap monument at single proportion measure between the found N.W. corner and the S.W. corner of Section 13.

At C1/4 Corner
Set Brass Cap monument

At C.S. 1/16 Corner
Set Brass Cap monument

At S. 1/16 Corner
Set Brass Cap monument

At S.W. Corner Section 14
Found Original marked Corner Stone 13"x10"x7" set in a mound of stone.
Set Brass Cap monument.

At S1/4 Corner Section 14
Found Original marked Corner Stone 13"x10"x7" marked 1/4 set in a mound of stone, and remains of 2 Bearing Trees.
Set Brass Cap monument.

At S.W. Corner Section 13
Found Original marked Corner Stone 14"x10"x5" set in a mound of stone and 3 Bearing Trees.
Chiseled a 6"x6" cross 1" deep in bedrock.

At S1/4 Corner Section 13
Found Original Corner Stone 15"x11"x6" marked 1/4, and 1 Bearing Tree.
Set Brass Cap monument.

At E1/4 Corner Section 22
Found Original Bearing Tree stump and Original Corner Stone 16"x14"x10" in fence corner.
Set Brass Cap monument at record bearing and distance from bearing tree stump.