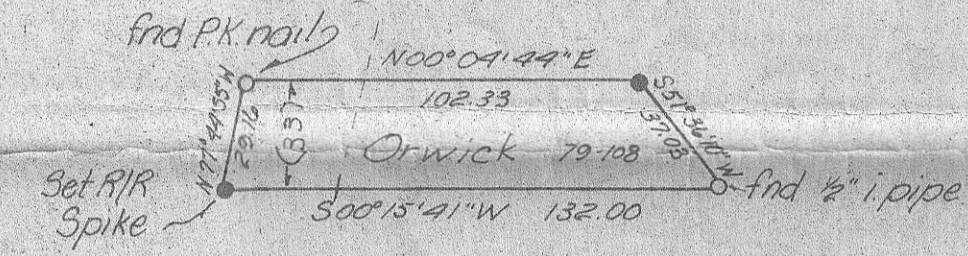




Survey by D. Stoehr for Standard Oil, May 14, 1951
 Referred to bolt found by Stoehr at NE corner, Lot 5, Blk. IV, Original Town



Detail "A"
 (A part of N St)

ORIGINAL TOWN

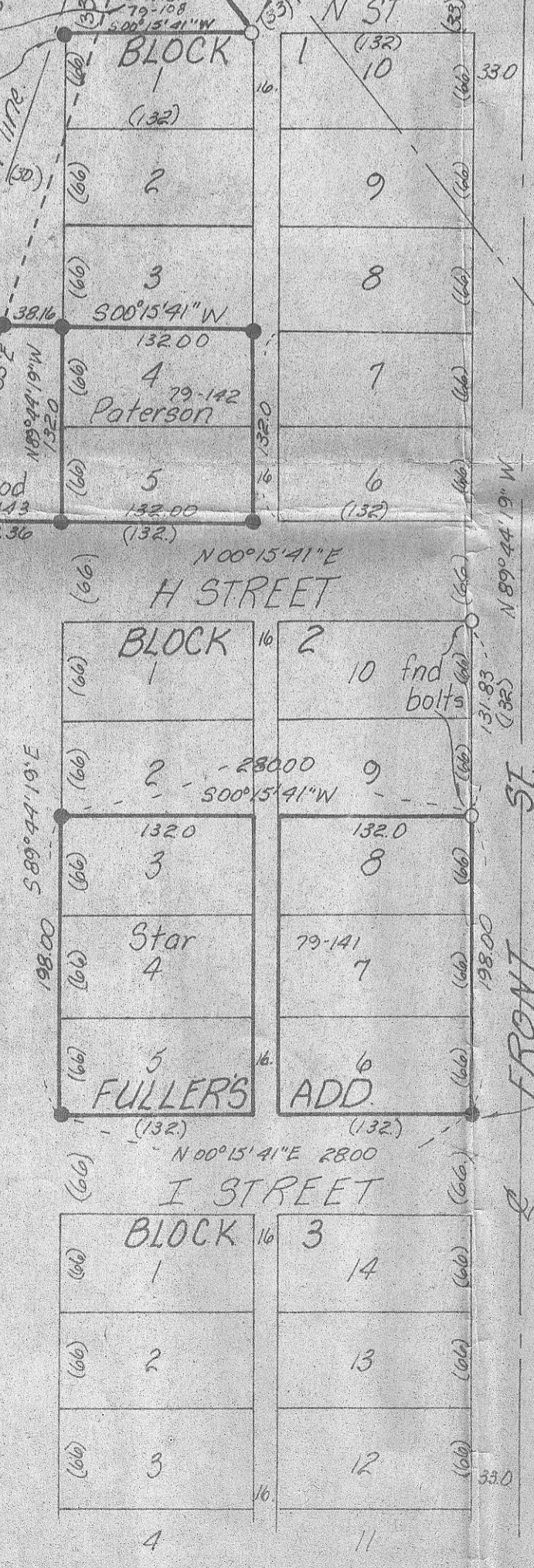
found fence corner locally
 accepted as Section corner
 Set brass cap witness
 corner 10.00 north

26 35
 27 34

find PK nail locally
 accepted as the inter
 section of Hwy 4 with N-S
 center of section line. It does
 fit fence - fence intersection
 to the north

See Detail "A"

find PK nail on N-S center of
 ORR STAFF HWY 4
 find PK nail located from existing
 777.70±
 5.99±41.19±E



find R/R Spike
 set by Don Stoebler
 7-20-73

U.P.R.R. Data
 3° Curve Left
 Δ = 19°26'
 Rad = 191.008

- denotes monuments found
- denotes 3/8" iron pin set unless noted otherwise
- () denotes recorded distances

- Note:
1. Bolts found in block 2, Fuller's Add. are identical to bolt noted on Stoehr 1951 survey in the Original Town of Lexington.
 2. Penland's Addition was established by using record distances, the E of C Street and the E of West Street.
 3. Fuller's Addition was based on monuments found as noted, record distances were used.
 4. Bearings based upon the N-S center of section line, assumed to bear N 00° 04' 44" E.

- Surveys for:
1. Gene Orwick 79-108
 2. G. Patterson 79-142
 3. D. Wood 79-143
 4. A.C. Starr 79-141

RECEIVED BY
 Morrow County Surveyor
 Date 7-10-79
 Rec'd By M.J.J.
 No. # 256-K-6016

KRUMBEIN ENGINEERING CO.
 ENGINEERS - SURVEYORS - PLANNERS
 221 S. Main, Pendleton, Oregon

Scale 1" = 100'

DATE 6-3-79

DRAWN BY M.L.J.

CHECKED BY I.C.

DRG. NO. 79-370

Surveys in
LEXINGTON, OREGON
 Parcels in SE 4 of Sec 27, T18R25E

27 34
 28 33