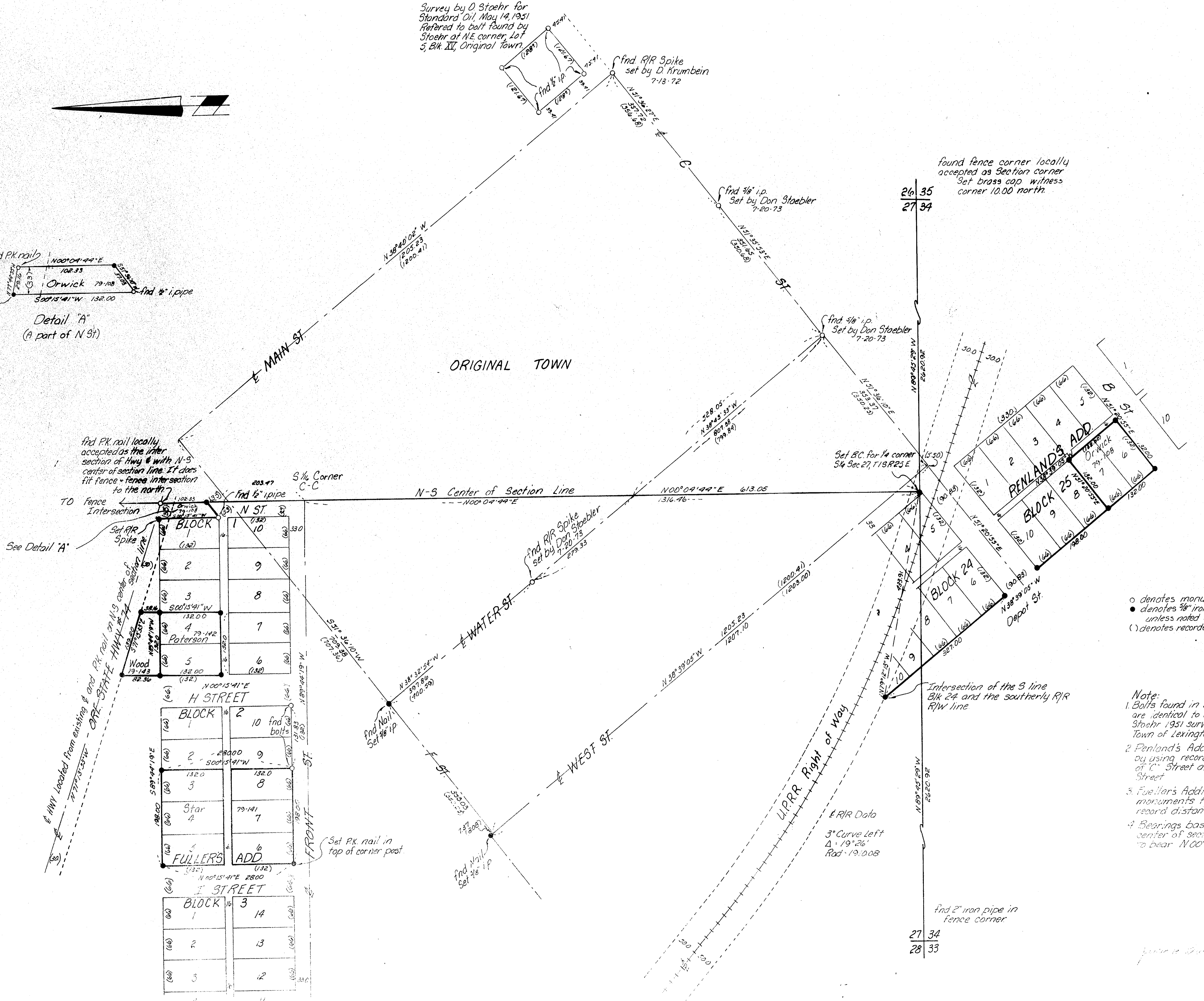


Survey by D. Stoehr for Standard Oil, May 14, 1951. Referred to bolt found by Stoehr at NE corner, Lot 5, Blk. III, Original Town.



o denotes monuments found  
● denotes 3/8\"/>

- Note:
- Bolts found in block 2, Fullers Add are identical to bolt noted on Stoehr 1951 survey in the Original Town of Lexington.
  - Penland's Addition was established by using record distances, the E of C Street and the E of West Street.
  - Fullers Addition was based on monuments found as noted, record distances were used.
  - Bearings based upon the N-S center of section line, assumed to bear N 00° 04' 44\"/>

Surveys for

Gene Orwick	19-108
E.G. Patterson	19-142
E.D. Wood	79-43
E.C. Star	10-141

RECEIVED BY  
Morrow County Surveyor  
Date 10-15-79  
Used by M.L.D.  
No. D-256-h

KRUNBEIN ENGINEERING CO		SCALE
ENGINEERS - SURVEYORS - PLANNERS		DATE
221 S. Main, Lexington, Oregon		5-2-79
DRAWN BY		DATE
CHECKED BY		DATE
DRAWING NO.		20-247

D-256-K