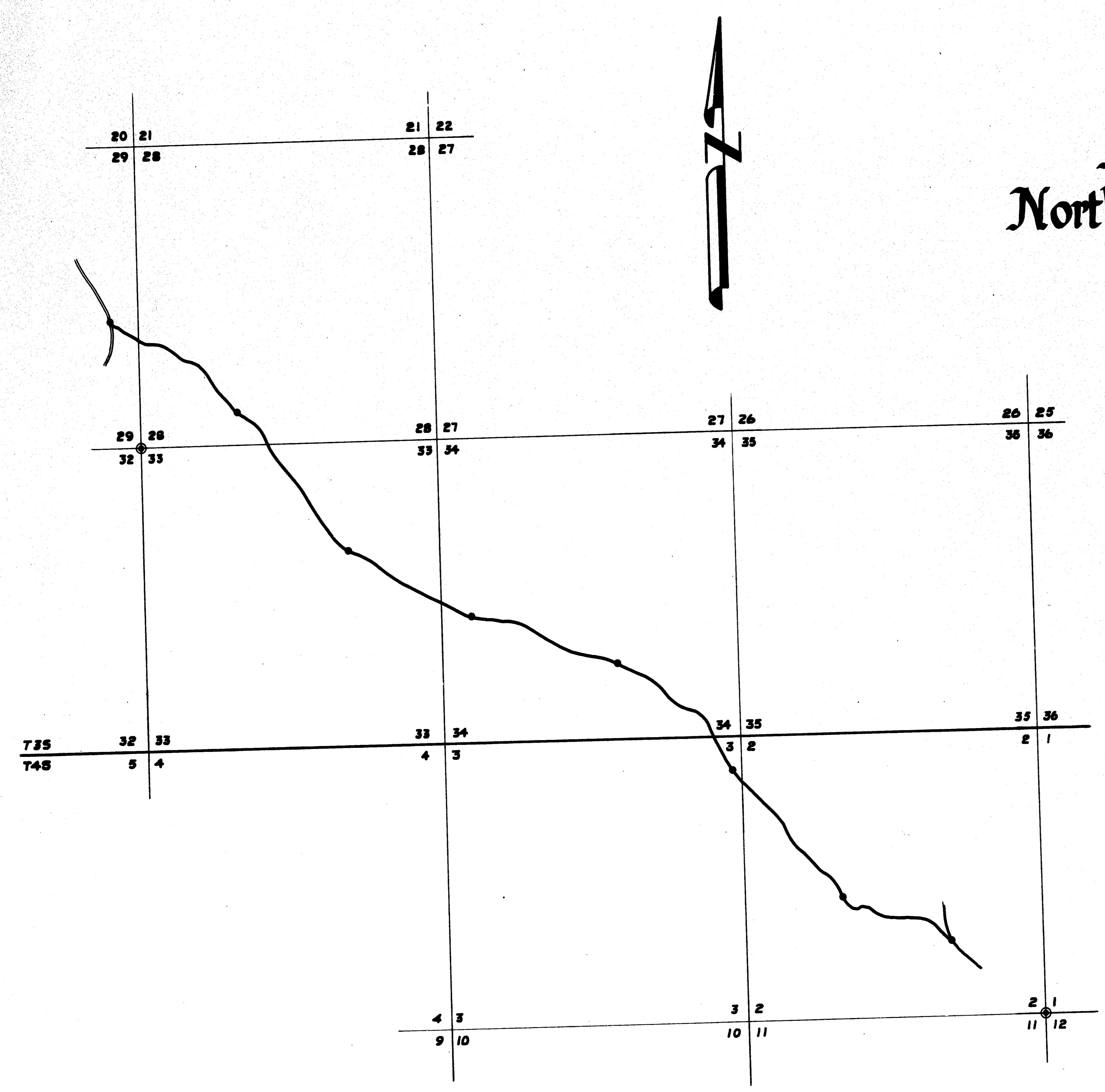


MAP OF SURVEY
Morrow County Road Department
North Fork Willow Creek Road
 IN
 T3&4S R28E W.M.

SURVEYED IN SEPTEMBER 1970
 BY
BAGETT - GRIFFITH - FERGUSON



- LEGEND**
- PI's which were referenced
 - ⊙ Section Corners tied
 - Existing Roads

FILED
Blair D. Baggett
 Morrow County Surveyor
 INDEXED

RECEIVED BY
 Morrow County Surveyor
 Date 6-20-79
 Rec'd By mjl
 No. D-248-K
 Only COPY
 do not REMOVE
 Sheet 1 of 3

INDEX SHEET

D-248-K-600

D-248-K