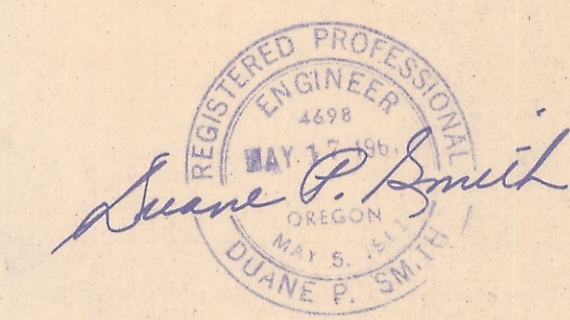
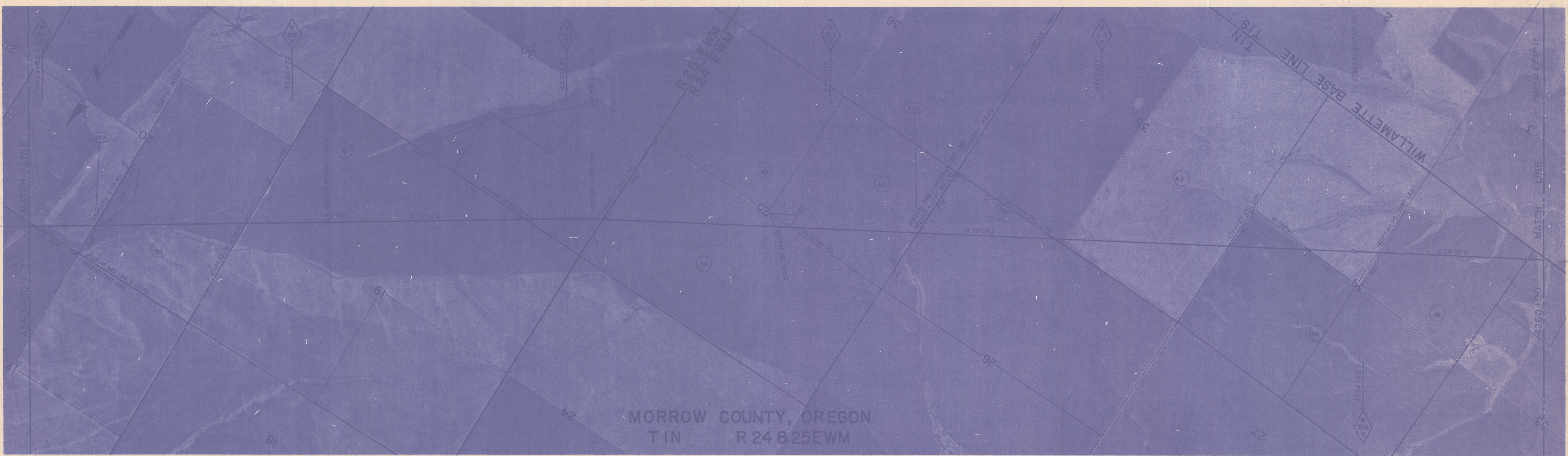


X-RAY	% IN PLANT											
	% IN FIELD											
TEST PRESSURE												
COVER-3'(U.O.N.)												
R/W NO.	O-MO-35	O-MO-36H	O-MO-38	O-MO-39H	O-MO-42	O-MO-44 H	O-MO-42	O-MO-46	O-MO-42	O-MO-48		
OWNERSHIP	L.D. HALE et al	County Road	Catherine Fitzpatrick, et al	County Road	Ralph Crum	County Road	Ralph Crum	Carl. W. Troedson	Ralph Crum	David Rietmann, et al		
ACRES			34.53				20.06	3.04	3.68	14.51		
FIELDBOOK NO.					MO-2							
PAGE NO.					9-15							
R/W DETAILS												
TERRAIN	BARLEY			WHEAT			PLOWED FIELD		PASTURE	PLOWED FIELD	WHEAT	WHEAT



**AS BUILT**



PHOTOS 186-189 INCL.

CONSTRUCTION DETAILS	REF. DWGS.	Const. Dwg. No. A-CD-106 Typical Dwg. No. D-HX-144 Permit Dwg. No. C-HX-155	A-CD-106	D-HX-144, A-CD-106 C-HX-155	A-CD-106
	PIPELINE DETAILS		C-2	C-1	C-1
PIPE	36" x 0.438" WT 5LX 52 (EXCEPT AS NOTED)				
COATING	ASPHALT PRIMER, 1/8" ASPHALT ENAMEL, GLASS INNER WRAP, FELT OUTER WRAP				

RECEIVED BY  
Morrow County Surveyor  
Date 6-20-79  
Rec'd By mls  
No. D-247-K

MAINLINE BILL OF MATERIALS (STA. 4260+00 TO STA. 4560+00)	
0.438" WT. PIPE	29,750 FT.
0.531" WT. PIPE	250 FT.
SINGLE CT. & DBLE. WRAP	29,774 FT.
DBLE. CT. & DBLE. WRAP	226 FT.
TEST LEADS, C-1	2 EACH
TEST LEADS, A	1 EACH

TEST LEADS, C-2	1 EACH
CASING, 42" O.D. x 0.344" W.T.	0 FT.
VENT PIPE, 3" SCHED.	0 FT.
INSULATORS	0 EACH
END SEALS	0 EACH

NOTE: ALL BENDS ARE SMOOTH FIELD BENDS EXCEPT WHERE FACTORY BENDS ARE NOTED.

D-247-K-598

APPROVED BY		GM
By <i>Rw</i>		BY DSGN. DR. KAYE
		CH. F.E.M.
		O.K. A.T.T.
		DATE 7.21.59
		SCALES 1" = 100' Approx.

**36" PIPELINE**  
**M.P. 311.0 to M.P. 316.7**  
**MORROW COUNTY, OREGON**  
PACIFIC GAS TRANSMISSION COMPANY  
SAN FRANCISCO, CALIF.

BECHTEL CORPORATION AGENT	
SAN FRANCISCO	CALIF.
BILL OF MATERIAL	
SHEET NO. 55 OF 106 SHEETS	
DRAWING NUMBER	CHANGE
<b>B-AL-155</b>	<b>1</b>

(355) D-247-K

Hammann, Jackson & Miller  
CALIFORNIA