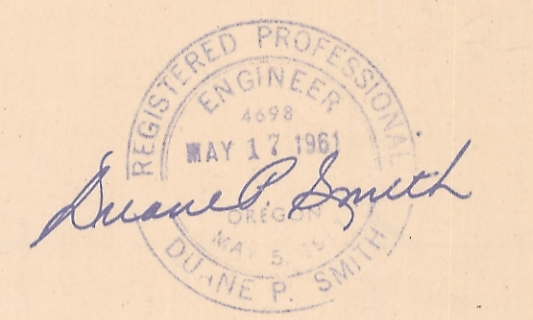
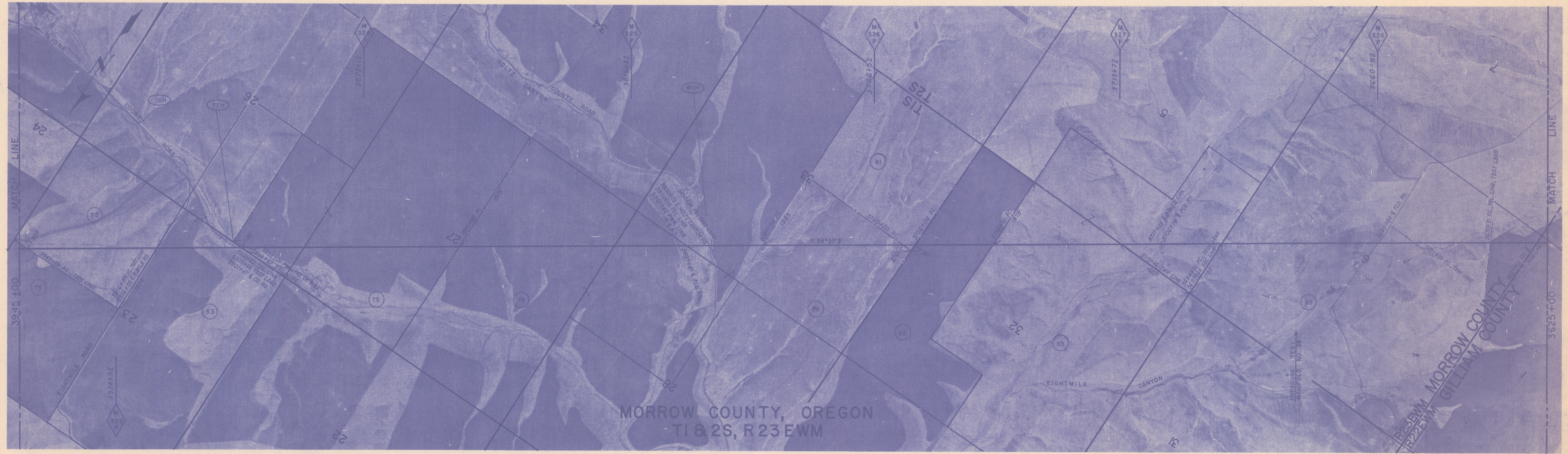


X-RAY	% IN PLANT																
	% IN FIELD																
TEST PRESSURE	MAXIMUM-1245 P.S.I.G.    MINIMUM-1017 P.S.I.G.												MAXIMUM-1195 P.S.I.G.    MINIMUM-1031 P.S.I.G.				
COVER 3' (U.O.N.)																	
R/W NO.	0-MO-75	0-MO-73	0-MO-76 H	0-MO-53	0-MO-77H	0-MO-75	0-MO-79	0-MO-80H	0-MO-79	0-MO-81	0-MO-82	0-MO-83			0-GI-1		
OWNERSHIP	K. Shuirman	Leonard M. Flood	County Eightmile Road	Robert Rietmann	County Road	Katherine F. Shuirman & Hazel Rizzio	Herman E. Klindworth & Mildred Klindworth	County Road		J.O. Kincoid Estate	W. B. Rice, et al	Charles Carlson et ux			Charles Carlson, et ux		
ACRES		6.31		3.99		10.75	20.95			10.4	3.65	25.90			7.27		
FIELDBOOK NO.																	
PAGE NO.																	
R/W DETAILS	COND. PLAT 0-MO-73 DWG. NO. C-RW-287																
TERRAIN SURFACE & VEGETATION	WHEAT	PASTURE & SAGE BRUSH			WHEAT	CULT.		SAGE BRUSH	WHEAT	SAGE BRUSH	WHEAT	SAGE BRUSH	CULT.	SAGE BRUSH	CULT.	PASTURE	BARLEY



**AS BUILT**



REF. DWGS.	CONST. DWG. NO. TYPICAL DWG. NO. A-CD-106 PERMIT DWG. NO. -	D-HX-144 A-CD-106 C-HX-155	D-HX-144 A-CD-106 C-HX-155	D-HX-144 A-CD-106 C-HX-155	A-CD-106	A-CD-106	A-CD-106
PIPELINE DETAILS							
PIPE	36" x 0.438" WT API 5LX52 (EXCEPT AS NOTED)						
COATING	ASPHALT PRIMER, 1/8" ASPHALT ENAMEL, GLASS INNER WRAP, FELT OUTER WRAP						

RECEIVED BY  
Morrow County Surveyor  
Date 6-20-79  
Rec'd By MLJ  
No. A-244-K

MAINLINE BILL OF MATERIALS (STA 3625+00 TO STA. 3945+00)			
0.438" W.T. PIPE	31,803 FT	TEST LEADS, C-2	2 EACH
0.531" W.T. PIPE	157 FT	CASING, 42" O.D. x 0.344" W.T.	0 FT.
SINGLE CT. & DBLE. WRAP	31,827 FT	VENT PIPE, 3" SCHED.	0 EACH
DBLE. CT. & DBLE. WRAP	173 FT	INSULATORS	0 EACH
TEST LEADS C-1	5 EACH	END SEALS	0 EACH

APPROVED BY		GM
BY <u>KL</u>		BY
DR. I.D.I.		DR. I.D.I.
CH. F.E.M.		CH. F.E.M.
O.K. A.T.T.		O.K. A.T.T.
DATE 5.27.59		DATE 5.27.59
SCALES		SCALES
1"=1000' APPROX.		1"=1000' APPROX.

36" PIPELINE  
M.P. 322.6 to M.P. 328.7  
MORROW COUNTY, OREGON  
PACIFIC GAS TRANSMISSION COMPANY  
SAN FRANCISCO, CALIF.

BECHTEL CORPORATION AGENT SAN FRANCISCO CALIF.
BILL OF MATERIALS SHEET NO. 57 OF 106 SHEETS DRAWING NUMBER CHANGE
<b>B-AL-157 O</b>

**D-244-K-595**

only copy (357) D#244-K