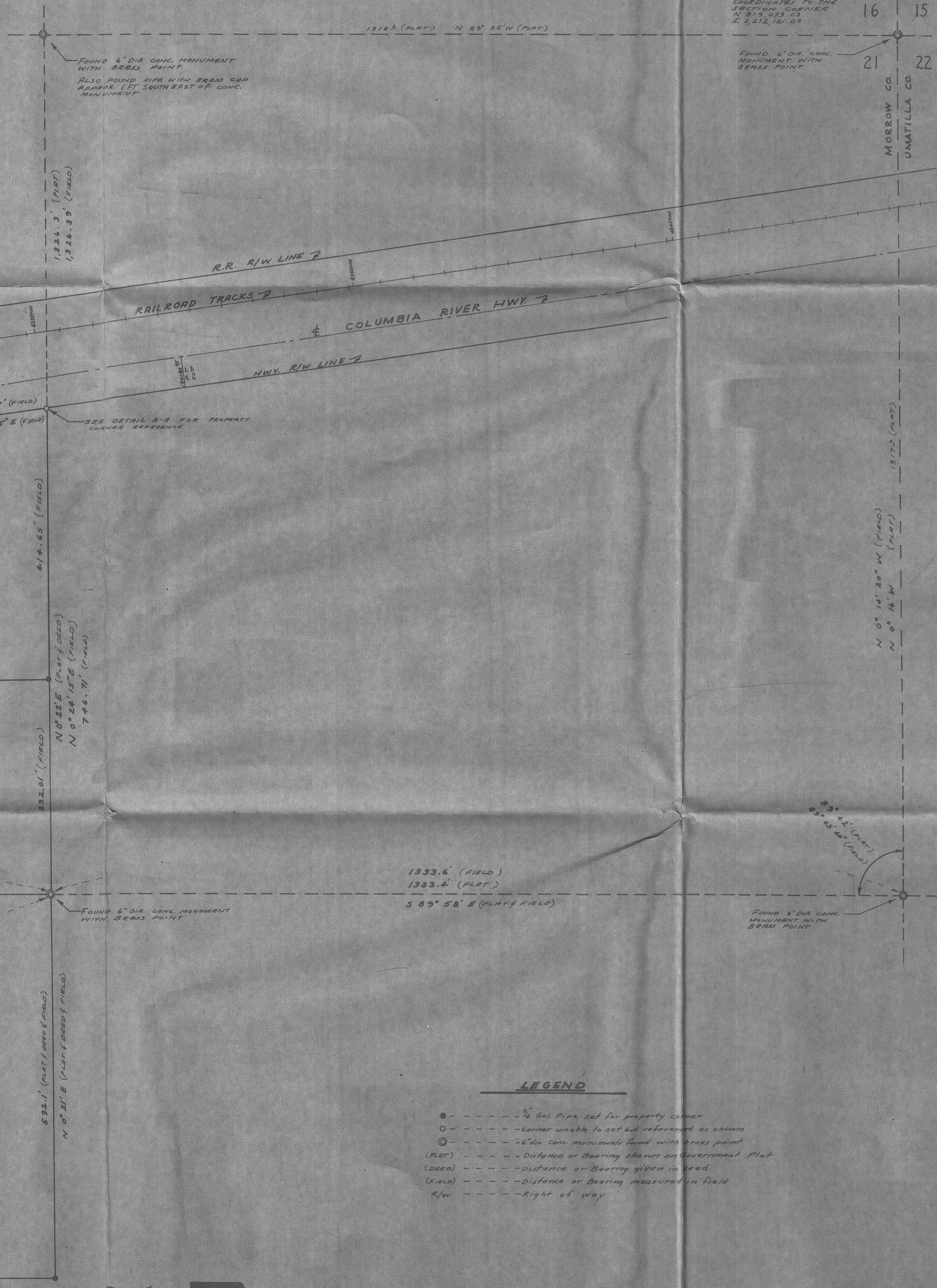


OREGON STATE HWY
COORDINATES TO THE
SECTION CORNER
N 31° 03' 33"
E 272.12.03

16 15
21 22
MORROW CO.
UNMATTILA CO.

HWY & CURVE DATA
 D = 1° 00'
 TOTAL Δ = 10° 40' 30"
 TOTAL T = 335.40'
 SPIRAL Δ = 2° 00'
 a = 0.25

R.R. CURVE
 D = 2° 00'
 Δ = 10° 40'



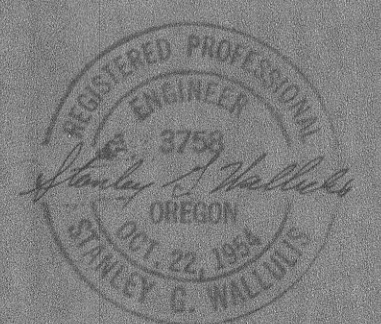
FOUND 6" DIA CONCRETE MONUMENT WITH BRASS POINT

FOUND 6" DIA CONCRETE MONUMENT WITH BRASS POINT

FOUND 6" DIA CONCRETE MONUMENT WITH BRASS POINT

LEGEND

- --- 5/8 Gal. Pipe set for property corner
- --- Corner unable to set but referenced as shown
- ⊙ --- 6" dia. Conc. monuments found with brass point
- (PLAT) --- Distance or Bearing shown on Government Plat
- (DEED) --- Distance or Bearing given in deed
- (FIELD) --- Distance or Bearing measured in field
- R/W --- Right of way



PROJECT: **BATIE P. RAND SURVEY**
 A PROPERTY SURVEY FOR
BATIE P. RAND IN THE W 1/2,
NE 1/4, SEC. 21, T 5 N, R 27 E, W.M.

DR BY: **D.L.S.** DATE: **Aug. 13, 1945** SCALE: **1" = 100'**
 CK BY: REV.: SHEET **2** OF **1**

STANLEY G. WALLULIS
 Consulting Engineer
 P. O. Box 91
 213 S.W. Emigrant
 Pendleton Oregon