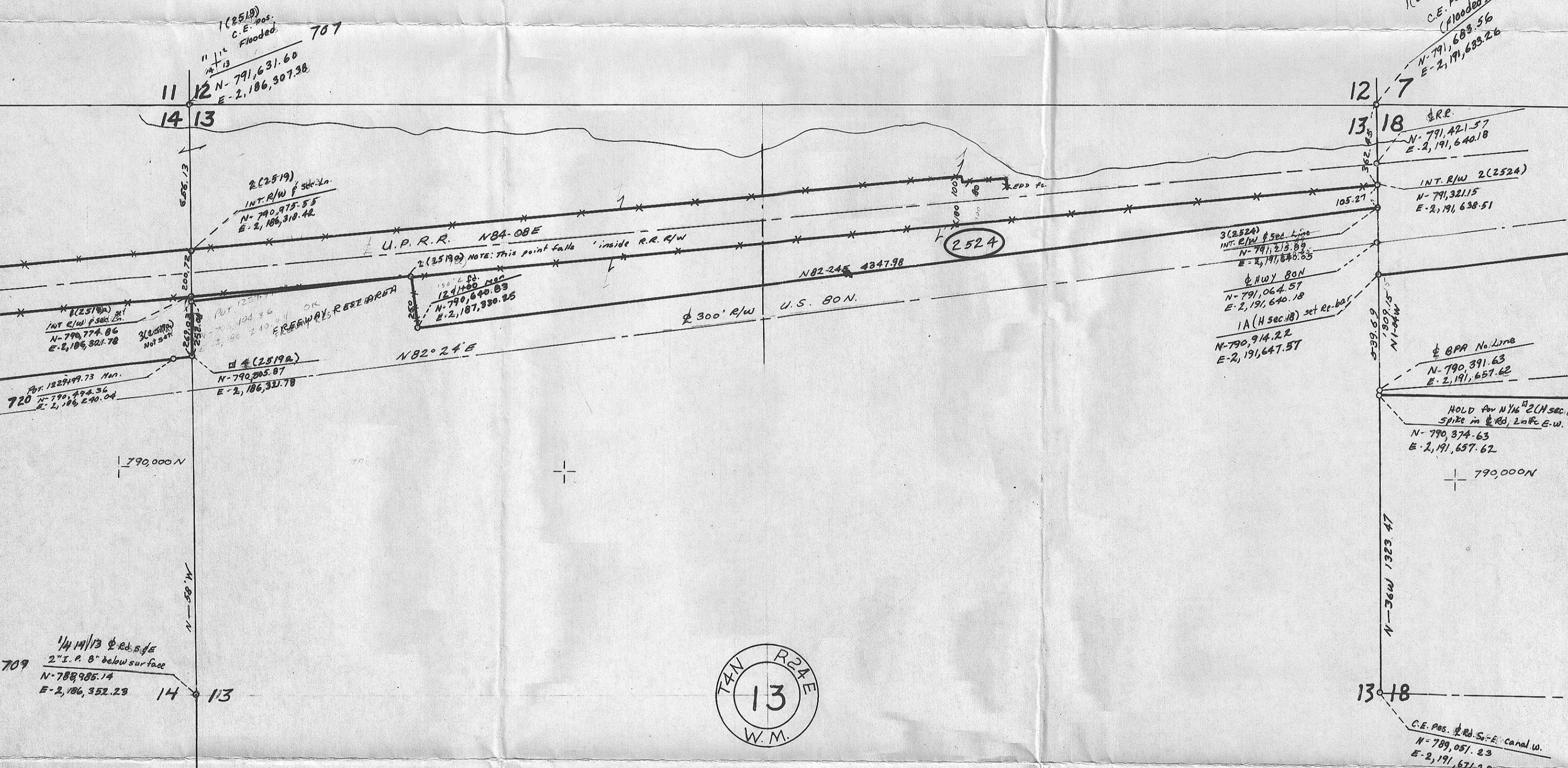


2,192,000  
794000

2,188,000



ENG. OREGON  
UMATILLA  
C-6E

1" = 400'

C-916-E  
C-6E-562

709  
1/4 14/13 1/2 Rd. 5 ft  
2" I.P. 8" below surface  
N-788,985.14  
E-2,186,352.23

RR spike to E-W-N-S 706  
N-786,316.60  
E-2,186,372.68

C.E. pos. 1/2 Rd. S-E canal w.  
N-789,081.23  
E-2,191,671.28