

DEPENDENT RESURVEY & SECTION SUBDIVISION

TO MARK U.S.F.S. PROPERTY LINES IN SECTION 5, T.5S., R.29E., MORROW COUNTY, OREGON.

NARRATIVE

This survey was performed at the request of the Umatilla National Forest in the summer of 1986. A random control traverse was run through known corners, and search areas for missing corners. All traverses are closed. All missing corners were searched for based on the control traverse and were recovered or determined lost and positioned by proportion. With all controlling corners positioned and tied, the interior property lines and corners were positioned.

The North one-quarter corner of Section 5 was established by William R. Wells, 1106 PLS in a 1979 dependent re-survey under U.S.F.S. Contract 53-04H1-9-7409N. In my opinion, the corner was erroneously set based on a proportion against the Township corners controlling Township 4 South, Range 29 East. My survey established the North one-quarter corner by single proportion between the closing corners controlling Section 5, Township 5 South, Range 29 East. This position is S.89°53'42"W., 16.34 feet from the 1979 brass cap and has been monumented. The East one-sixteenth corner on the North line of Section 5 is similarly affected and the new position is S.89°57'02"W., 8.17 feet from the 1979 brass cap.

A topcon GTS-2 was used in performing the control survey and locating corners and property lines.

Computing was done by a HP-41C and Wang 2200 T Computer.

SURVEYOR'S CERTIFICATION

I, Thomas M. Hanson, Registered Professional Surveyor in the State of Oregon, hereby certify that this plat and the notes hereon or attached are a correct representation of this survey performed under my direct supervision, in accordance with the statute of the State of Oregon, and at the request of the U.S. Forest Service under Contract No. 53-04R3-6-20.

REGISTERED
PROFESSIONAL
LAND SURVEYOR

Thomas M. Hanson, PLS 1058

10-10-86
Date

LEGEND

OREGON
JUNE 18, 1976
THOMAS M. HANSON
1058LS

Heavy line shows property line marked with steel fence posts and USFS 54-2 (property boundary) signs attached. Maximum spacing of set post is 300 feet.

- = 3-1/4 inch PCI aluminum cap on 2-1/2 x 30 inch aluminum pipe, set this survey.
- = 3-1/4 inch PCI aluminum cap on 2-1/2 x 30 inch aluminum pipe, set this survey from found evidence.
- = Found standard BLM monument
- ⊗ = Found brass cap set by PLS 1106, 1979.
- ⊙ = Found brass cap set by PLS 644, 1975.
- = Found GLO brass cap 1938.
- (R1) = G.L.O. RECORD FROM 1882 PLAT.(SANDERSON)
- (R2) = G.L.O. RECORD FROM 1883 PLAT.(FRANK CAMPBELL)
- (R3) = G.L.O. RECORD FROM 1938 PLAT
- (R4) = RECORD FROM 1975 PLAT BY PLS 644
- (R5) = RECORD FROM 1979 PLAT PLS 1106, No. 255 K

UMATILLA NATIONAL FOREST

BISCUIT CADASTRAL SURVEY

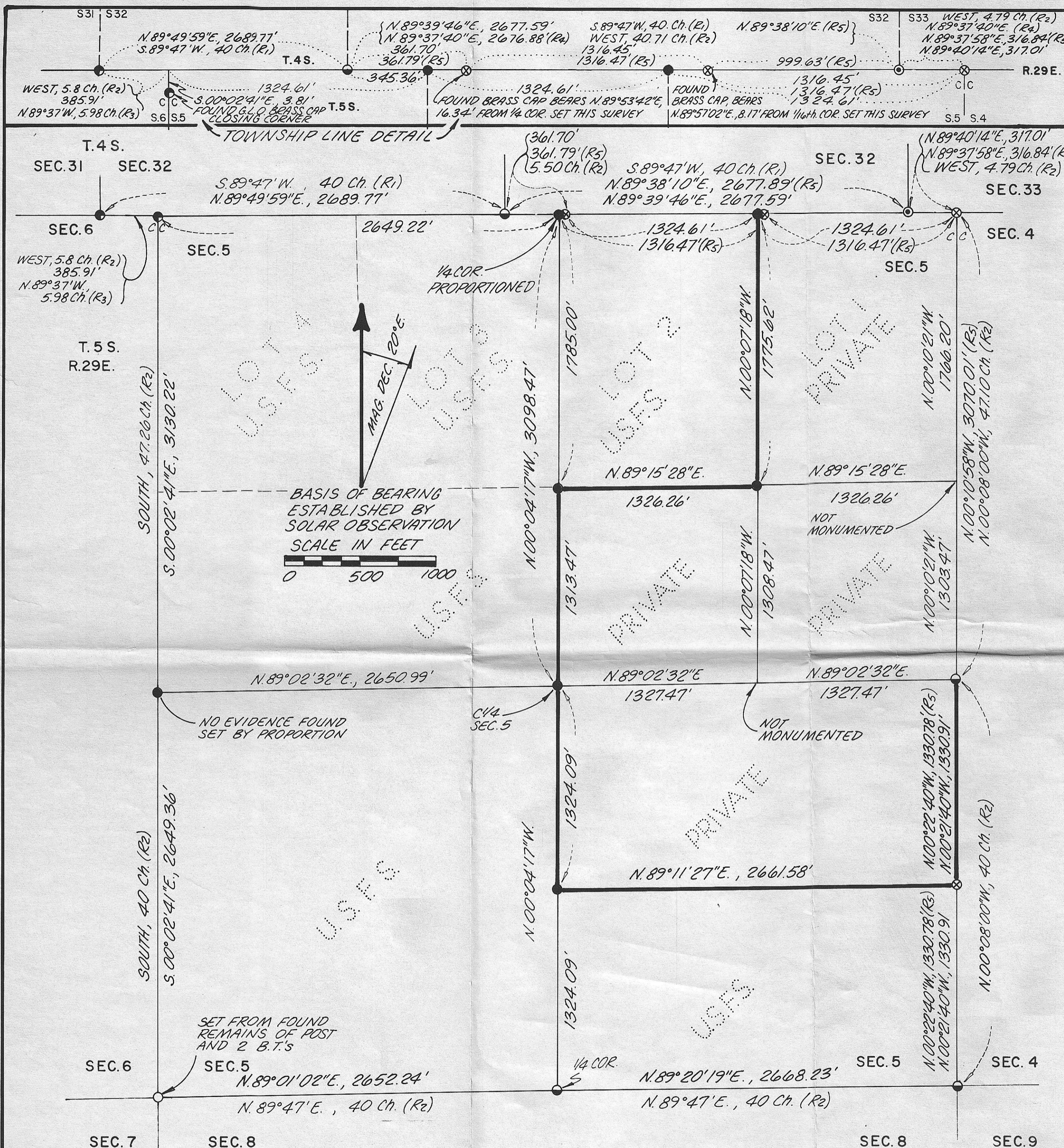
SECTION 5, T.5S., R.29E., W.M.
MORROW COUNTY, OREGON

TRAVERSE BOOKS 3&4 MONUMENT BOOK 1 POSTING & TOPO-TIES BOOK 5

CONTRACT NO.
53-04R3-6-20

SURVEYED: K.J. July & Aug., 1986
DRAWN: M.S. Aug 20, 1986

SHEET 1 OF 1



NOTES
For additional information on corners recovered, re-established or set this survey, see certified monumentation records filed with Morrow County Records.

FIELD BOOK REFERENCE: Traverse Books 3 and 4, Monument Book 1, Posting & Topo Ties Book 5, of Biscuit Cadastral Survey, Contract No. 53-04R3-6-20.

HISTORY
Township line established in 1882 by E.W. Sanderson, Contract No. 417
Township 5 South, Range 29 East surveyed in 1883 by Frank W. Campbell under Contract No. 468.
1938 partial dependent re-survey by GLO, (L. Carter)
1975 monuments set by PLS 644 as shown, (Griffith)
1979 monuments set by PLS 1106 as shown, (Wells)

PROFESSIONAL CONSULTANTS INCORPORATED
SURVEYORS ■ ENGINEERS ■ GEOLOGISTS ■ PLANNERS

MISSOULA, MONTANA
P.C.I. PROJECT 3682-86
Z50-73