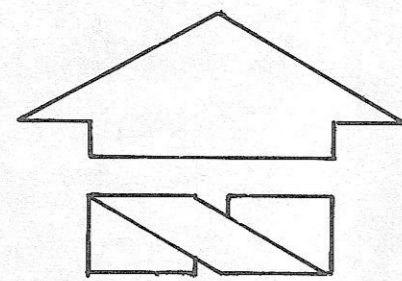


Donald C. Cunningham
 PROFESSIONAL
 LAND SURVEYOR



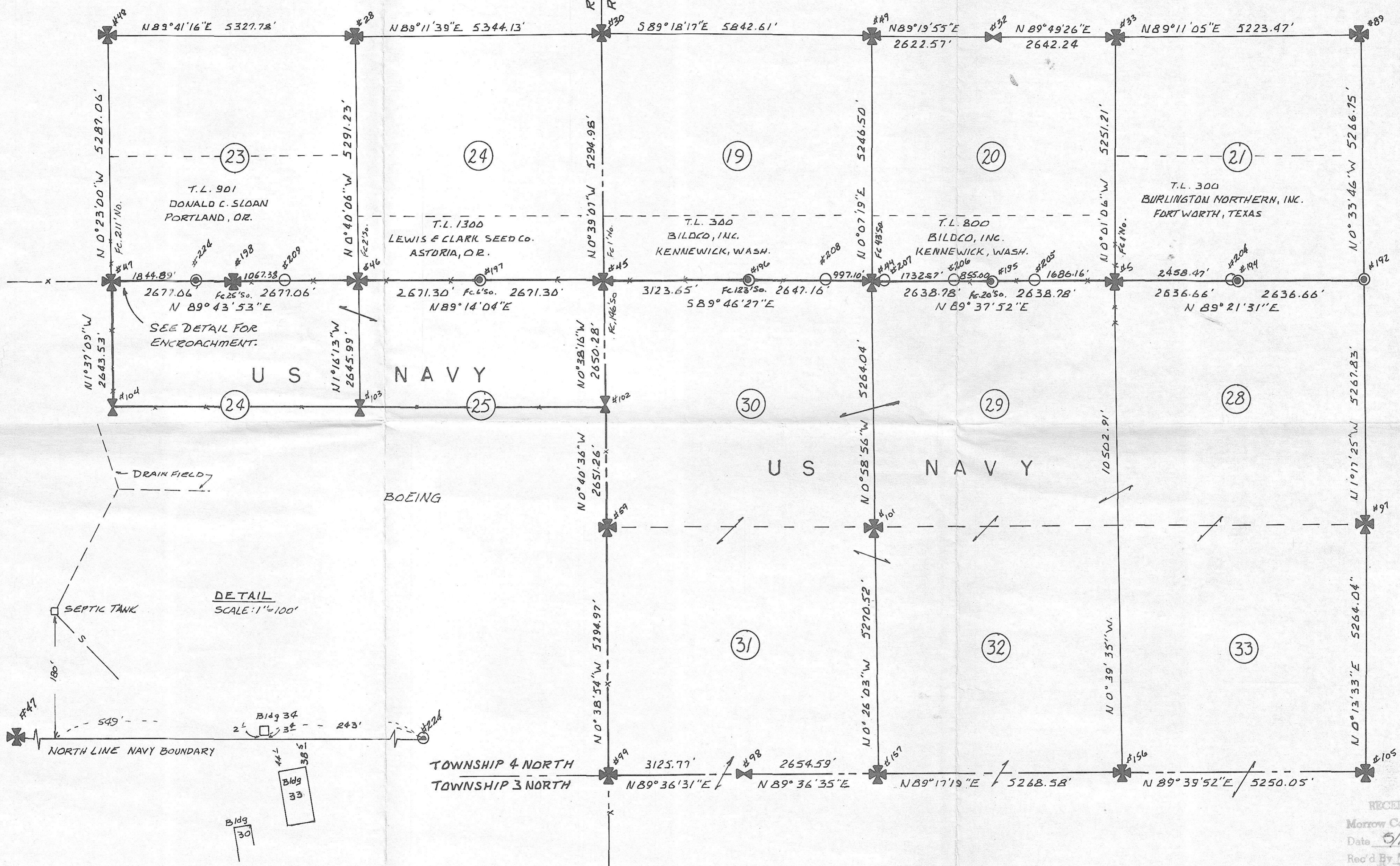
SCALE: 1" = 1500'

ALL BEARINGS & DISTANCES ARE GRID: SEE NOTES 1-3, PAGE 2 OF 3

LEGEND

- ✚ FOUND
- ⊙ SET STANDARD BERNTSEN MON.
- SET 3/4" IRON PIPE ON LINE.
FC = FENCE LINE
T.L. = TAX LOT

Fnd. Walker 5/8" Re-bar #33 N88°19'07"E
 N 786,359.69
 E 2,202,820.81
 Fnd. SEA Re-bar Cap #88 N 786,408.616
 E 2,204,487.472
BASIS OF BEARINGS
 SEE NOTES 1-3, PAGE 2 OF 3.



DETAIL
 SCALE: 1" = 100'

RECEIVED BY
 Morrow County Surveyor
 Date 5/16/86
 Rec'd By MLD
 No. C-810-K

RECORDER'S CERTIFICATE

Filed for record this ... day of ... 19 ... at ... M
 in book ... of ... at page ... at the request of
 ... P.O.L. ENGINEERING INC. ...
 Surveyor's Name

SURVEYOR'S CERTIFICATE

This map correctly represents a survey made by me or under my
 direction in conformance with the requirements of the Survey Recording
 Act at the request of G. GILLIES, DIC. USN, WEST. DIV. N.F.E.C.
 in MAY, 19 86

... DONALD C. CUNNINGTON ...
 Certificate No. ... 603 ...

BOUNDARY SURVEY
 NAVAL WEAPONS SYSTEM TRAINING FACILITY
 BOARDMAN, OREGON
 FOR
 U.S. DEPT. OF NAVY
 WESTERN DIVISION - NAVAL FACILITIES
 ENGINEERING COMMAND CONTRACT NO. N62474-85-D-0715

P.O.L. ENGINEERING INC.

ONE PLAZA 10800 N.E. 8th BOX 97033
 BELLEVUE, WA 98009
 PHONE: (206) 455-9494

DWN BY D. CUNNINGTON	DATE MAY 1986	JOB NO. 204750112
CHKD BY RML	SCALE 1" = 1500'	SHEET 1 OF 3

KUMER-RANKEN INC. 91907