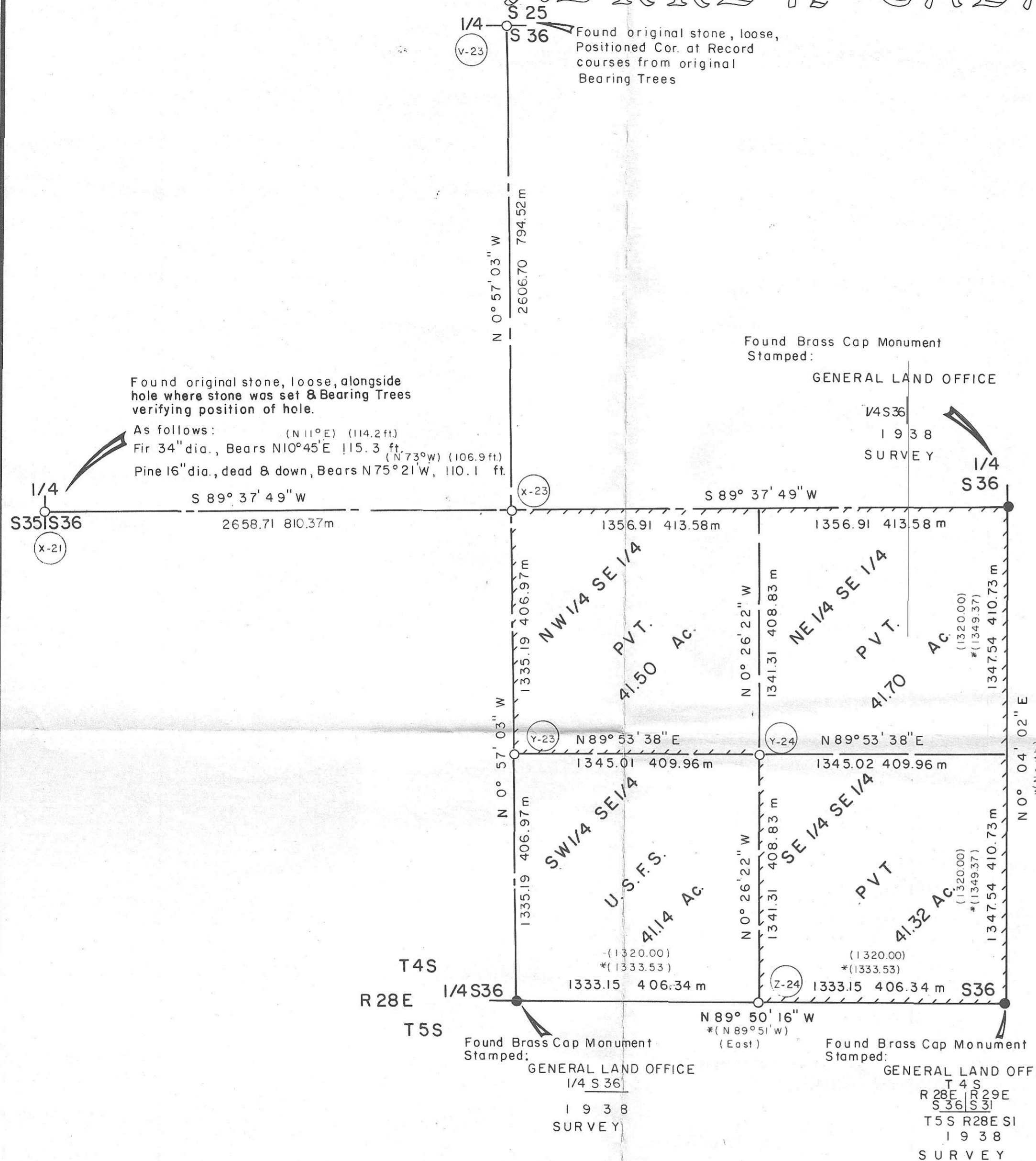


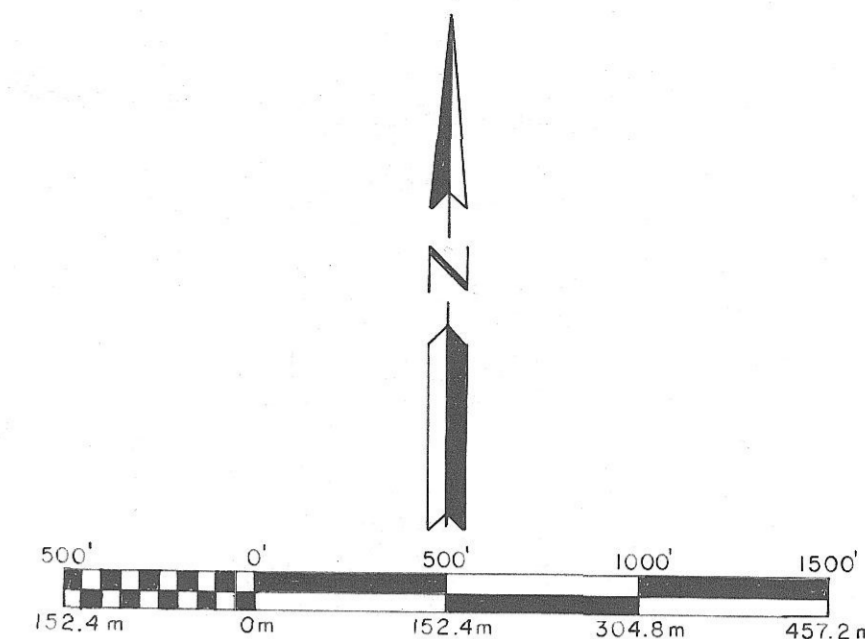
HERREN CADASTRAL SURVEY



See corresponding Standard U.S.F.S Corner Reference Number in the Circle on the Map Hereon. Nailed Bearing Tree Signs, Warning Signs & Brass Washers Stamped PLS 848 to each Tree. Set steel posts with warning & boundary signs, within 5' and on the property line on each side of all corners. See "Certified Record of Land Corner Monumentation" as on file in the office of the Morrow County Surveyor for a complete description of monument & accessories. (Monuments Stamped as Shown Below)

- (Z-24) T 4 S R 28 E S 36 A Lodge Pole Pine 16" dia. Bears N80°W, 43.8 ft., Scribed E 1/16 S 36 BT
A " " " 5" dia. Bears N56 1/2°E, 26.3 ft. Scribed 1/16 BT
- (Y-24) T 4 S R 28 E SE 1/16 S 36 A Spruce 6" dia. Bears S 62°W, 9.9 ft., Scribed SE 1/16 S 36 BT
A " 8" dia. Bears N 28° E, 4.3 ft., " SE 1/16 S 36 BT
- (Y-23) T 4 S R 28 E C S 1/16 S 36 A Fir 10" dia. Bears S 58°E, 13.7 ft., Scribed C-S 1/16 S 36 BT
A " 9" dia. Bears S 45°W, 29.5 ft., " C-S 1/16 S 36 BT
- (X-23) T 4 S R 28 E C 1/4 S 36 A Tamarack 8" dia. Bears N 78°E, 6.0 ft., Scribed C 1/4 S 36 BT
A Spruce 14" dia. Bears S 13°W, 6.9 ft., " C 1/4 S 36 BT
- (X-21) T 4 S R 28 E 1/4 S 36 A Fir 10" dia. Bears N 23°W, 77.7 ft., Scribed 1/4 S 35 BT
A Fir 25" dia. Bears N 5° E, 92.3 ft., " 1/4 S 36 BT
- (V-23) T 4 S R 28 E 1/4 S 36 A Fir 10" dia. Bears S 86°W, 18.4 ft., Scribed 1/4 S 36 BT
A " 7" dia. Bears N 7°E, 33.9 ft., " 1/4 S 25 BT

MAGNETIC DEC. = 20° EAST



BASIS OF BEARINGS

Solar Observation Taken Northerly from the South 1/4 Cor. Sec. 36

LEGEND

- Set 2-1/2" x 30" Aluminum Pipe with 2-1/2" Aluminum Cap
- Found Brass Cap Monument of Record
- ▬ Property Line Marked by setting steel posts with Boundary Signs at maximum intervals of 300'. Post average 200'.
- () Record Bearing or Distance from original G.L.O. Survey
- * () Record Bearing or Distance from G.L.O. Dependent Resurvey OF 1938.

NARRATIVE

This Survey is performed at the request of the Umatilla National Forest, the purpose of which is the subdivision of Section 36, subsequent to the monumentation & posting of the Forest Boundary as shown on the map hereon. All retracement, restoration, subdivision & monumentation is carried out in conformance with the pertinent provisions of the 1973 edition of the "Bureau of Land Management, Manual of Surveying Instructions".

Positional control is provided by a closed traverse network. Electronic Distance Measuring equipment, Theodolite & HP-86B Computer are used to obtain the measurements & perform the computations. Field notes & computations are on file in the office of "Ferguson Surveying & Engineering" Mt. Vernon, Oregon.

I, Douglas M. Ferguson, Registered Professional Land Surveyor in the State of Oregon, hereby certify that this plat and the notes hereon or attached are a correct representation of the survey I performed during August, 1984, for the U.S. Forest Service, in accordance with the statutes of the State of Oregon and the articles of my contract, Contract No. 53-04R3-3-01360.

Douglas M. Ferguson Or. PLS. 848

HISTORY

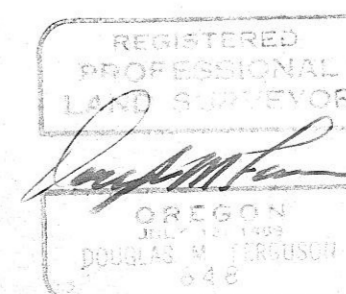
South & East boundaries of Sec. 36 where originally surveyed in 1881, by Edward W. Sanderson, under General Land Office, Contract No. 417. Sanderson surveyed East along the line between Twp. 4 & 5 South, Setting corners pertaining to each Twp., he then turned North and ran the East line.

The North & West Boundaries of Sec. 36 where originally surveyed in 1884, by Frank W. Campbell, under General Land Office Contract No. 507, while subdividing the East three tiers of T.4S., R.28 E.

In 1938, General Land Office Cadastral Engineer, Leonard Carter made a dependent resurvey, in accordance with supplemental special instructions, dated Sept. 6, 1938. This survey included the South & East Boundaries of Sec. 36. The corners, as shown on the 1938 survey, where monumented from original evidence.

See monumentation sheets, Co. Nos. 750-K to 760-K

RECEIVED BY
Morrow County Surveyor
Date 1-10-86
by MLD
C-800-K



FERGUSON SURVEYING & ENGINEERING MT. VERNON, OR.	
Map of Survey SUBDIVISION OF THE SOUTHEAST 1/4 of SECTION 36 T. 4 S., R. 28 E. MORROW COUNTY, OREGON	
FOR: Umatilla National Forest	BY: Douglas M. Ferguson
DATE: AUG, 1984	DRAWN BY: J.D. Brinton
SCALE: 1" = 500'	

C-800-K-521