

PLAT OF PORTER CADASTRAL SURVEY

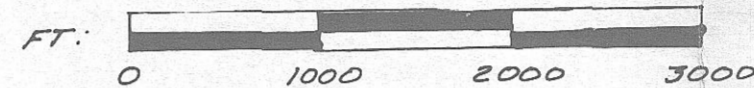
SURVEY OF PART OF THE N LINE OF T.7S., R.25E., W.M. WHEELER CO. OREGON; SAID LINE BEING PART OF THE S LINE OF T.6S., R.25E., W.M., MORROW CO., OREGON.

FOR
THE U.S. FOREST SERVICE
CONTRACT NO.
43-04R3-4-550

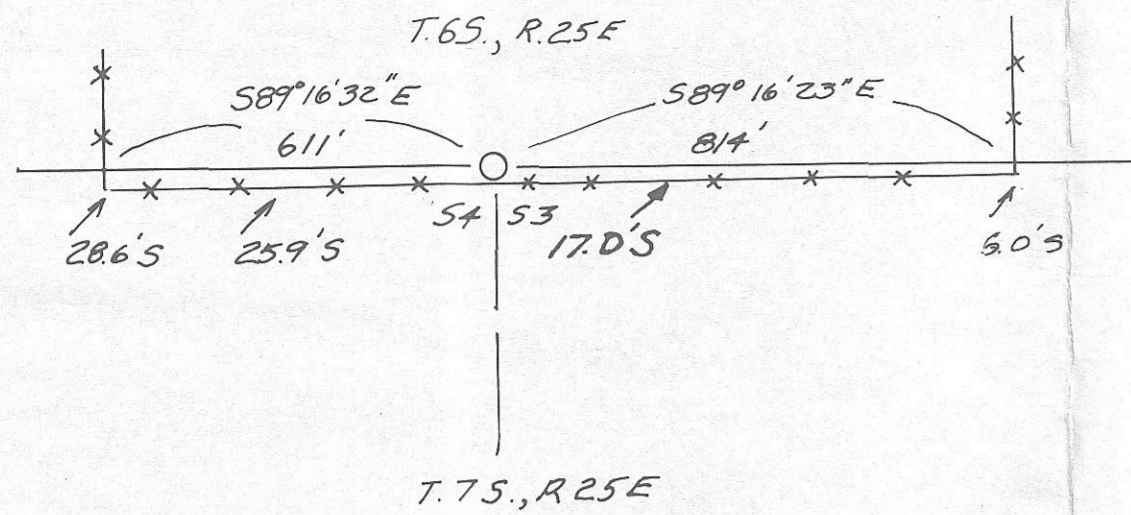
- ⊙ FOUND 2 1/2" G.I.P. W/BRASS CAP, PLS 1051, 1978
- MONUMENT SET FROM ORIGINAL CORNER EVIDENCE
- MONUMENT SET BY PROPORTIONATE MEASUREMENT

— LINE POSTED TO STANDARD

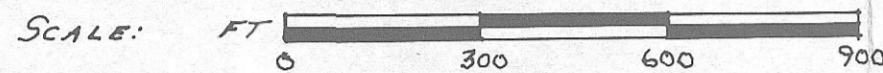
SCALE:



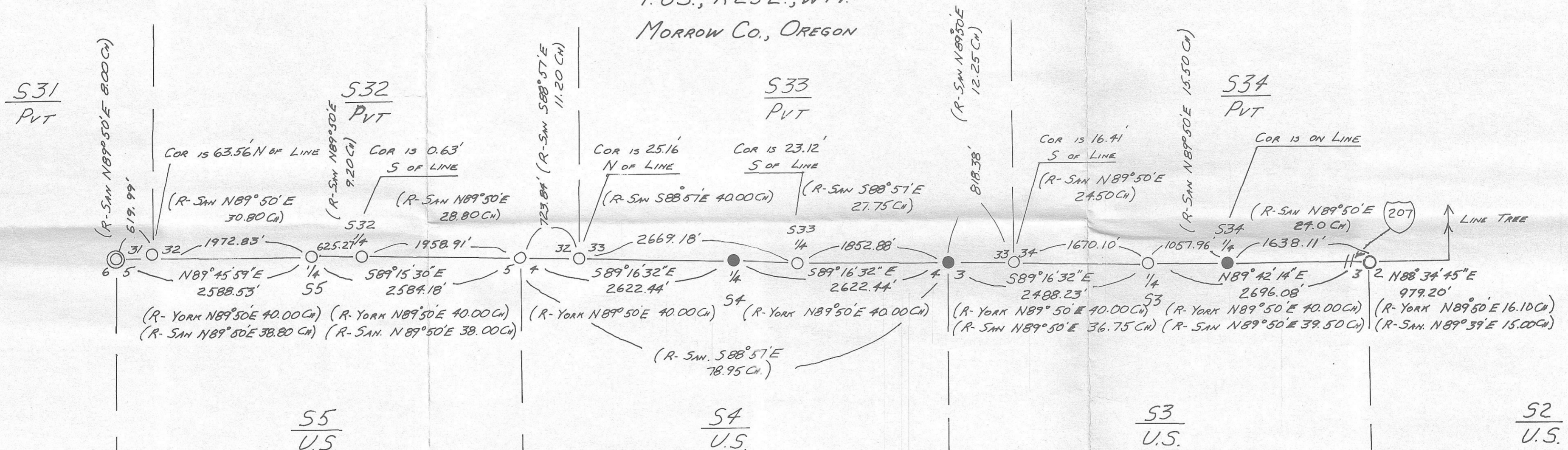
7-2-83
DHK
C-688-K
MEAN MAGNETIC DECLINATION
= 19 1/2° E
BASIS OF BEARING
SOLAR OBSERVATION



DETAIL OF FENCE ENCROACHING ON FOREST SERVICE



T.6S., R.25E., W.M.
MORROW CO., OREGON

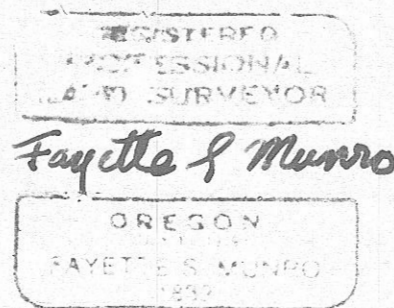


FOR HISTORY AND NARRATIVE SEE PORTER CADASTRAL SURVEY: HISTORY AND NARRATIVE FILED WITH THIS PLAT.

CONTRACT SURVEYOR'S CERTIFICATE

I, FAYETTE SMITH MUNRO, A REGISTERED PROFESSIONAL LAND SURVEYOR IN THE STATE OF OREGON, HEREBY CERTIFY THAT THIS PLAT AND THE HISTORY AND NARRATIVE HEREIN REFERRED TO ARE A CORRECT REPRESENTATION OF A SURVEY PERFORMED BY ME OR UNDER MY DIRECTION DURING MAY AND JUNE, 1984 AT THE REQUEST OF THE U.S.D.A. FOREST SERVICE, IN ACCORDANCE WITH THE STATUTES OF THE STATE OF OREGON AND THE ARTICLES OF MY CONTRACT.

Fayette Smith Munro
FAYETTE SMITH MUNRO
REGISTERED PROFESSIONAL LAND SURVEYOR
OREGON LICENSE No. 1832



NOTE: CERTIFIED RECORDS OF LAND CORNER MONUMENTATION ARE FILED FOR EACH CORNER SET DURING THIS SURVEY. THEY CONTAIN A HISTORY OF THE ORIGINAL CORNER, THE CORNER EVIDENCE FOUND AND A DESCRIPTION OF THE MONUMENTS AND ACCESSORIES PERPETUATING THE CORNER LOCATION.

C-688-K-509

10/24/84
MLD
C-688-K