

R.26E. 24 19 25 30 R.27E.

AREA OF RECENT  
TIMBER TRESPASS  
BETWEEN PROPERTY  
LINE AND FENCE

ROAD  
62.4 FT

N0°42'01"W, 2,656.68'  
(NORTH 40.0 ch.)

47.5 FT

1/4 25 30

ROAD

N0°42'01"W, 2,656.68'  
(NORTH 40.0 ch.)

76.5 FT

PVT. 25 30 U.S. 36 31

N0°25'57"E, 2,643.67'  
(NORTH 40.0 ch.)

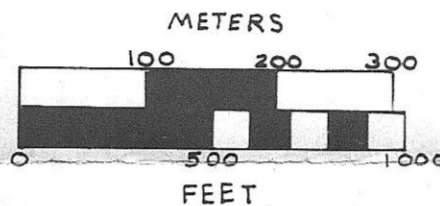
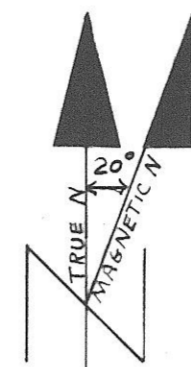
ROAD

1/4 36 31

N0°34'59"E, 2,597.32'  
(NORTH 40.0 ch.)

ROAD

T.5S. 36 31  
T.6S. 5



BASIS OF BEARING: SOLAR  
OBSERVATION NEAR  
1/4 25130

### NARRATIVE OF SURVEY

CONDUCTED SEARCH FOR ORIGINAL CORNER EVIDENCE IN AUGUST 1983 WHICH REVEALED ACCEPTABLE EVIDENCE FOR CORNERS 2419, 1/4 36131 AND 36131. CORNER MONUMENTATION AND SURVEY TO ESTABLISH PROPERTY LINES AND LOST CORNERS BEGAN IN SEPTEMBER AND WAS COMPLETED IN OCTOBER 1983. CORNER 25130 WAS MONUMENTED FROM ORIGINAL EVIDENCE FOUND DURING THIS PHASE. A DILIGENT SEARCH WAS CONDUCTED FOR 1/4 25130, BUT NO CORNER EVIDENCE WAS FOUND. THIS CORNER POSITION WAS DETERMINED BY SINGLE PROPORTION AND MONUMENTED.

A WOVEN WIRE FENCE ROUGHLY PARALLELS THE PROPERTY LINE AND AT POINTS THIS FENCE IS SOME DISTANCE EAST OR WEST OF THE PROPERTY LINE.

### HISTORY OF SURVEYS

THE TOWNSHIP CORNER AND CORNERS ON THE RANGE LINE FOR T.5S., R.26 + R.27E., W.M., WERE ORIGINALLY ESTABLISHED IN 1879 BY EVERETT A. THATCHER UNDER HIS G.L.O. CONTRACT NO. 325. THERE IS NO RECORD NOR EVIDENCE OF ANY SUBSEQUENT SURVEY OF THIS LINE.

### LEGEND

- SET 2" I.D. GALV. IRON PIPE 32" LONG WITH 2 1/2" BRASS CAP FROM EXISTING ORIGINAL EVIDENCE
- SET 2" I.D. GALV. IRON PIPE 32" LONG WITH 2 1/2" BRASS CAP BY PROPORTIONAL MEASUREMENT
- \*\*\*\* EXISTING FENCE LINE
- PROPERTY LINE POSTED
- ( ) ORIGINAL G.L.O. BEARING AND DISTANCE

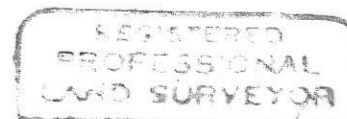
### NOTES

FOR INFORMATION ON CORNERS RECOVERED OR MONUMENTED, SEE CERTIFIED RECORD OF LAND CORNER MONUMENTATION FILED HERewith. FIELD BOOK REFERENCE - TRAVERSE AND MONUMENTATION BOOKS 1 AND 2, MADISON PROPERTY SURVEY. METHOD OF SURVEY - ZEISS TH43 THEODOLITE AND K+E AUTO RANGER EDM

### SURVEYORS CERTIFICATION

I, DENNIS L. GAYLORD, A REGISTERED PROFESSIONAL LAND SURVEYOR IN THE STATE OF OREGON, HEREBY CERTIFY THAT THIS PLAT, AND THE NOTES HEREON OR ATTACHED, ARE A CORRECT REPRESENTATION OF A SURVEY PERFORMED UNDER MY DIRECT SUPERVISION DURING THE MONTHS OF SEPTEMBER AND OCTOBER 1983 FOR THE U.S. FOREST SERVICE, IN ACCORDANCE WITH THE STATUTES OF THE STATE OF OREGON.

DENNIS L. GAYLORD, PLS  
OREGON LICENSE NO. 1636



Morrow County Surveyor  
Date 12/5/83  
Rec'd by MLD  
No. C-647-K



U.S. DEPARTMENT OF AGRICULTURE  
FOREST SERVICE  
UMATILLA NATIONAL FOREST  
MORROW COUNTY, OREGON

PLAT OF SURVEY  
PORTION OF THE RANGE  
LINE  
T.5S., R.26 AND 27E., W.M.  
MADISON PROPERTY SURVEY  
DRAWN BY: S. NEWSTETTER DATE: 11/7/83

C-647-K-494

C647K