

# RECORD OF SURVEY

FOR: U.S. ARMY CORPS OF ENGINEERS

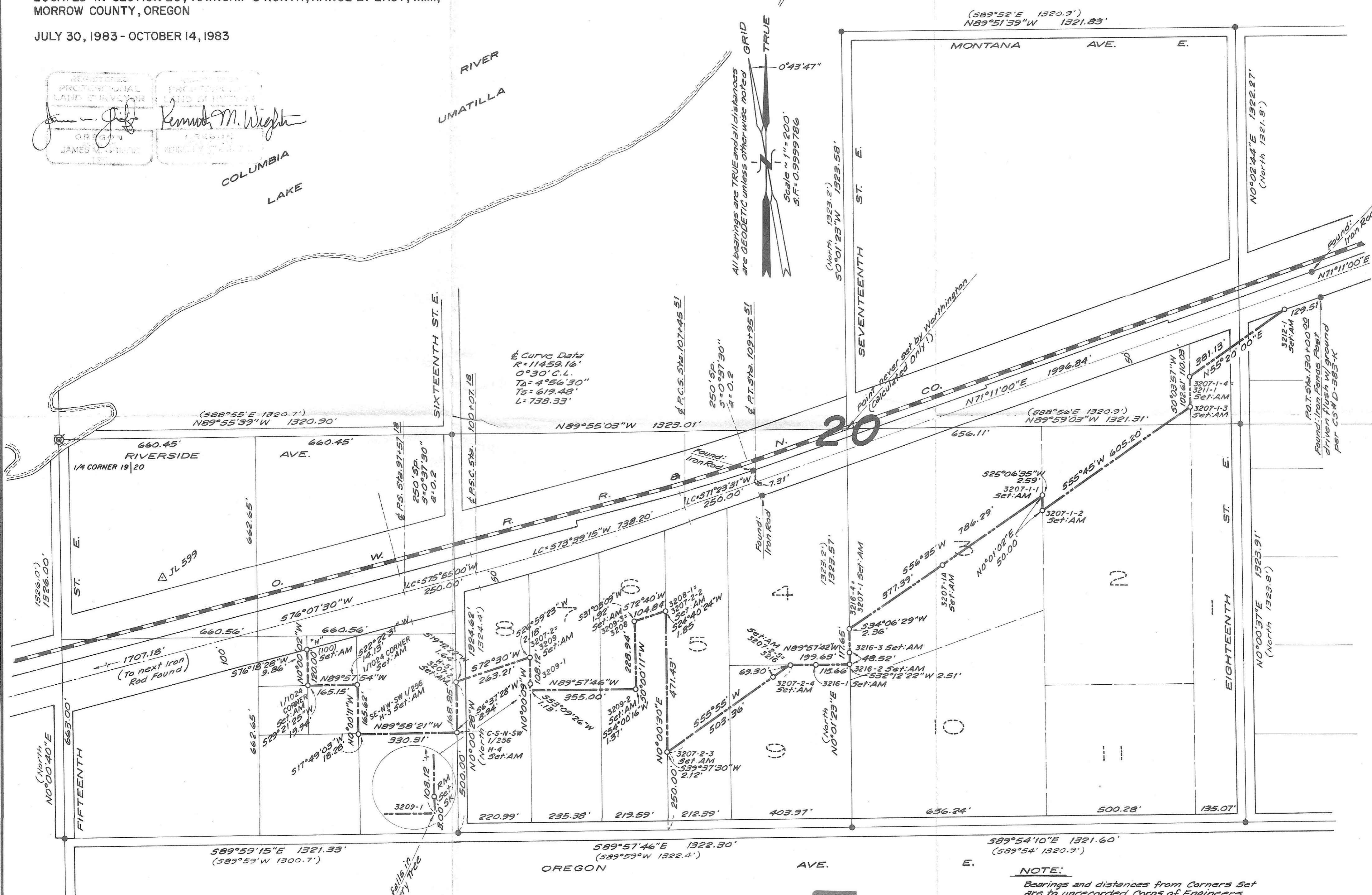
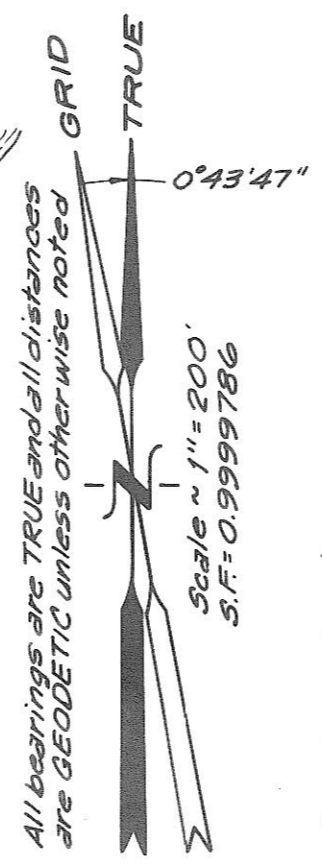
LOCATED IN SECTION 20, TOWNSHIP 5 NORTH, RANGE 27 EAST, W.M., MORROW COUNTY, OREGON

JULY 30, 1983 - OCTOBER 14, 1983

REGISTERED PROFESSIONAL LAND SURVEYOR  
 JAMES W. GIBSON  
 REGISTERED PROFESSIONAL LAND SURVEYOR  
 KENNETH M. WRIGHT

COLUMBIA LAKE

RIVER  
 UMATILLA



Curve Data  
 R=11459.16'  
 0°30' C.L.  
 TA=4°56'30"  
 TS=619.48'  
 L=738.33'

589°54'10"E 1321.60'  
 (589°54' 1320.9')

NOTE:  
 Bearings and distances from Corners Set are to unrecorded Corps of Engineers Monuments where found.  
 Para. 2.14

C-646-K-492