

**NARRATIVE**

Sections 4 & 9, T4N, R25E, WM  
Morrow County, Oregon

**Brief History**

This area was originally surveyed by Thompson, Pengra and David in October of 1869 under their Contract No. 131. The U.S. Army Corps of Engineers found and perpetuated many of these corners in the late 1950's in their preparatory work for the construction of the John Day Dam. They also monumented the west line of Tract B at that time. There has been several private surveys completed in this area which have utilized the existing Corps of Engineers perpetuation of the original Public Land Survey Corners.

**What Was Found**

As indicated on the Record of Survey, monuments of record were found at the two controlling Public Land Survey Corners.

We found Corps control monuments "JL-486" and "J-377" and incorporated them into our traverse.

The Union Pacific Railroad right-of-way was established by finding the iron monument at centerline stationing 6618+93.85. Right-of-way widths were established from Plan and Profiles from Corps of Engineers records dated March 16, 1965.

**Conclusion**

The original intent of this project was to monument the westerly boundaries of Tracts "B" and "H" north of the relocated Burlington Northern Railroad. Because of the current location of the Columbia River, Tract "H" has no westerly boundary. Tract "B" was quit-claimed from the U.S. Government to the Port of Morrow and recorded as Instrument No. 101224 (MFR #229) in the Records of Morrow County in November of 1967. The legal descriptions used in this document were based from State Plane Coordinate data. The document excepted out that part of Section 9 which was included in the abandoned Oregon-Washington Railroad and Navigation Company (O-WRNC) right-of-way. In May of 1974 the O-WRNC quitclaimed back to the U. S. Government the abandoned portions of the old right-of-way which had been the location of the railroad prior to June 18, 1962. This was a 100 foot right-of-way in our project area. Port of Morrow officials feel that a 60 foot right-of-way has been granted by the U.S. Government to Morrow County over what is now Marine Drive (the old railroad centerline). We were not able to find a legal transfer of this roadway and feel clarification should be made as to the exact status of the current roadway.

We held the position of the section corner to 3, 4, 9, and 10 and the quarter corner to 9 and 10 as the basis to establish the deed calls.

We found 1958 Corps Monuments "B-6" and "B-5" within tolerance. We reset aluminum monuments in place of these old pipes.

**General Information**

Basis of bearing was established utilizing published Lambert Coordinates Oregon North Zone data for the section corner to Sections 3, 4, 9, and 10 and the quarter corner to Sections 9 and 10. Grid scale factor and theta angle rotation was based on the above mentioned section corner. Bearings as shown on the plat have been rotated to true north and distances are geodetic.

Discrepancies between our monuments and previous recorded and unrecorded monuments are shown on the face of the plat.

We set a six foot steel fence post with witness plaque attached at all public land survey corners and project boundary corners shown as set or found on this Record of Survey.

There are no visible encroachments other than what is depicted on the Record of Survey.

**CERTIFICATION:**

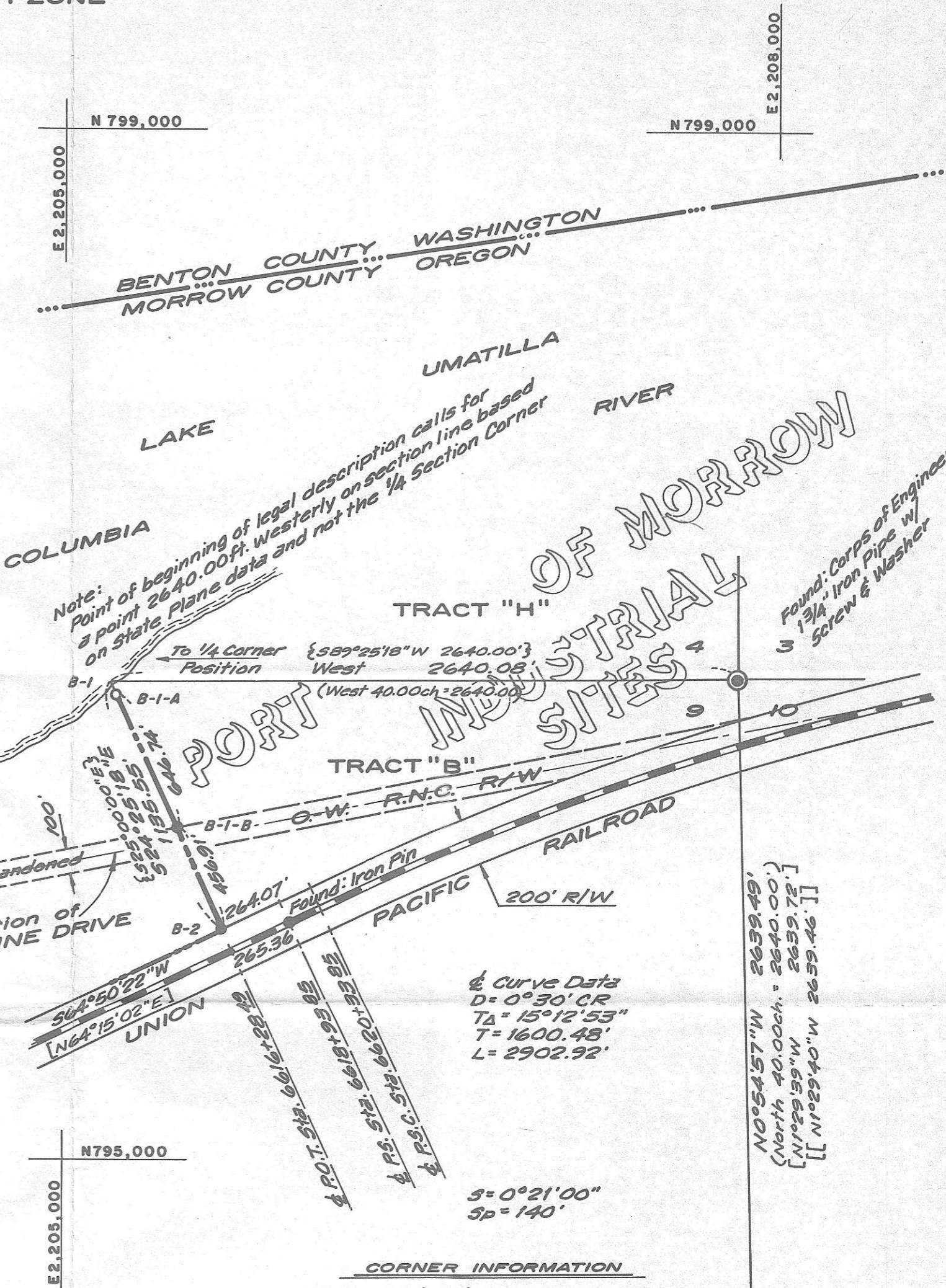
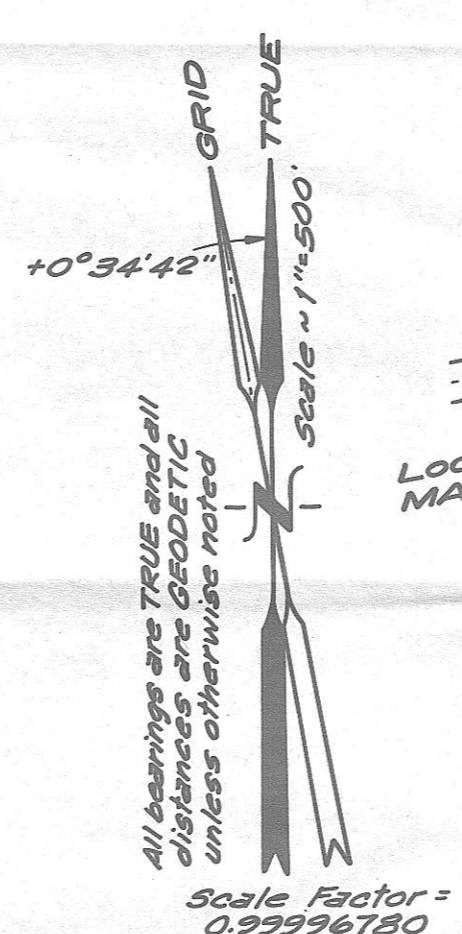
"We, James M. Griffis and Kenneth M. Wightman, registered land surveyors in the state of Oregon, hereby certify that this plat and the notes hereon, or attached, are a correct representation of a survey we performed during June thru August, 1983, at the request of the U.S. Army Corps of Engineers, in accordance with the statutes of the State of Oregon and with the Articles of our contract No. DACW57-83-C-0074.

REGISTERED PROFESSIONAL LAND SURVEYOR  
OREGON  
JAMES M. GRIFFIS  
1637

REGISTERED PROFESSIONAL LAND SURVEYOR  
OREGON  
KENNETH M. WIGHTMAN II  
942

**LAMBERT COORDINATE DATA OREGON NORTH ZONE  
BOUNDARY & CONTROL MONUMENT COORDINATES**

Corner Monument	Bearing	Distance	Northing	Easting
1/4 Cor. 9   10	N01°29'39"W	2639.308	794,379.700	2,207,901.585
Sec. Cor. 3   4 9   10	S89°25'18"W	2640.000	797,018.110	2,207,832.750
B-1 (Not Set)	S24°59'60"E	31.902	796,991.463	2,205,192.885
B-1-A	S25°00'00"E	646.719	796,962.550	2,205,206.367
B-1-B	S24°59'60"E	456.895	796,376.423	2,205,479.682
B-2 POT 6616+28.49			795,962.336	2,205,672.774
△ JL 486			796,370.162	2,206,564.119 (NEW)
△ J 377			796,255.790	2,204,836.517 (NEW)



**LEGEND**

- Corner Set as indicated  
AM = "Bernstein" Aluminum Monument w/ break away base  
BD = 3 1/2" Bronze Disc grouted in rock  
SK = 2" Aluminum "Surv-Kap" set on 3/8" x 30" Iron Rod
- Monument Found as noted
- ⊙ Public Land Survey Corner Found as noted
- ⊙ Original G.L.O. Corner now lost and position derived from previous survey data
- Corps Project Boundary
- Right of Way Boundary
- Extended Control Line
- Centerline of Road
- ( ) Record data per Thompson, Pengra & David January 8, 1870 Contract # 131
- [ ] Record data per Corps of Engineers Lambert Coordinates Oregon North Zone
- [ ] Record data C.S. # 272-K by Krumbein in 1977
- { } Record data per Morrow County Deeds mP No. 229

**CORNER INFORMATION**

B-1	Not Set
B-1-A	Set: AM
B-1-B	Found: 1 3/4" Iron Pipe w/ Screw & Washer "B-6" Reset: AM
B-2	Found: 1 3/4" Iron Pipe w/ Screw & Washer "B-5" Reset: AM

1/4 CORNER 9 | 10  
Found: Corps of Engineers 1 1/4" Iron Pipe w/ Brass Screw & Washer

**RECORD OF SURVEY**

FOR: U.S. ARMY CORPS OF ENGINEERS  
LOCATED IN THE S.E. 1/4 SECTION 4 & THE N.E. 1/4 SECTION 9,  
TOWNSHIP 4 NORTH, RANGE 25 EAST, MORROW COUNTY, OREGON.

JULY 30, 1983 - OCTOBER 14, 1983

Timberland ENGINEERS SURVEYORS  
McCullough FORESTERS PLANNERS  
1010 Airport Road, S.E. • P.O. Box 668 • Albany, OR 97321  
(503) 926-9404 Offices in Albany • Bend • McMinnville • Sunriver