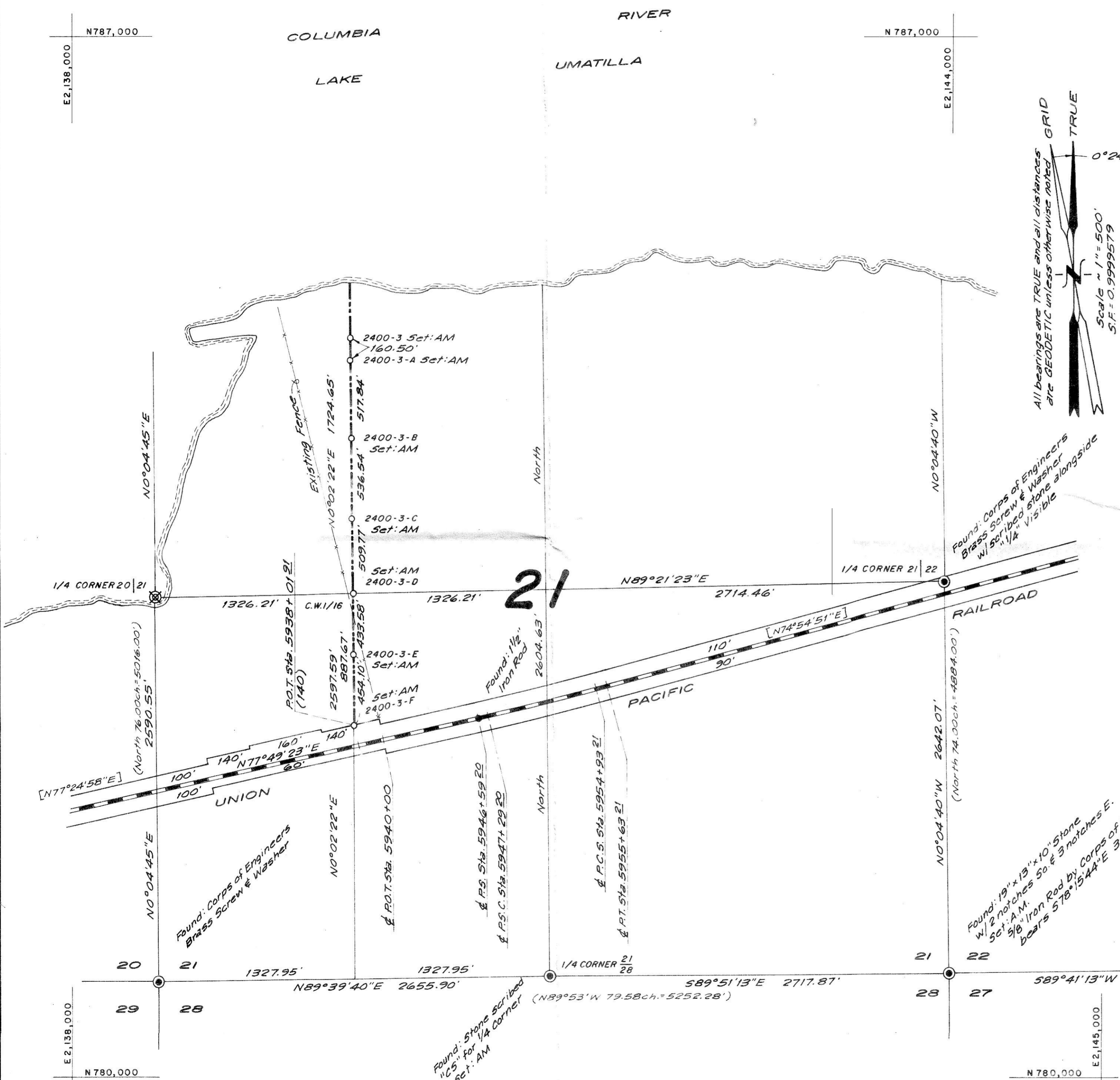
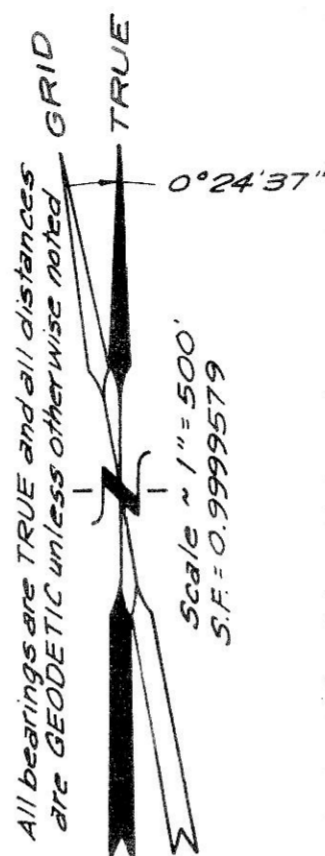


Reference Segment "24" of the John Day Dam Real Estate drawings

LEGEND

- Corner set as indicated
 - AM = "Bernstein" Aluminum Monument w/ break away base
 - BD = 3/2" Bronze Disc grouted in rock
 - SK = 2" Aluminum "serv-Kap" set on 5/8" x 30" Iron Rod
- Monument Found as noted
- ⊙ Public Land Survey Corner Found as noted
- ⊗ Original G.L.O. Corner now lost and position derived from previous survey data
- Corps Project Boundary
- Right of Way Boundary
- Extended Control Line
- Centerline of Road
- () Record data per G.L.O. (Thompson, Pengra & David) 1869
- [] Record data per Corps of Engineers Lambert Coordinates Oregon North Zone



CERTIFICATION:

"We, James M. Griffis and Kenneth M. Wightman, registered land surveyors in the State of Oregon, hereby certify that this plat and the notes hereon, or attached, are a correct representation of a survey we performed during June thru August, 1983, at the request of the U.S. Army Corps of Engineers, in accordance with the statutes of the State of Oregon and with the Articles of our contract No. DACW 57-83-C-0074.

James M. Griffis
JAMES M. GRIFFIS
REGISTERED LAND SURVEYOR

Kenneth M. Wightman
KENNETH M. WIGHTMAN
REGISTERED LAND SURVEYOR

Found: 19" x 19" x 10" Stone w/ 2 notches So. & 3 notches E. Set: A.M. 5/8" Iron Rod by Corps of Engineers bears S 78° 15' 44" E 355.91 Ft.

Found: 13" x 11" x 6" Stone w/ 1/4 scribed on N. face Set: A.M.

Found: 17" x 11" x 6" Stone w/ 2 notches So. & 2 notches E. Set: A.M.

RECORD OF SURVEY

FOR: U.S. ARMY CORPS OF ENGINEERS

LOCATED IN SECTION 21, TOWNSHIP 4 NORTH, RANGE 23 EAST, W.M., MORROW COUNTY, OREGON

JULY 30, 1983 - OCTOBER 14, 1983

SEE SHEET 2 FOR NARRATIVE & LAMBERT COORDINATES

11-30-83
D.L.K.
C-243-K
486