

- LEGEND**
- SET 2 1/2" X 3/8" BRASS CAPPED IRON PIPE.
 - SET 5/8" X 3/8" IRON PIN W/ PLASTIC CAP MARKED WALLULIS & ASSOCIATES INC.
 - MONUMENTS FOUND AS NOTED
 - [000] GLO BEARINGS & DISTANCES
 - (000) DISTANCES BY OTHER SURVEYORS.

NARRATIVE OF SURVEY

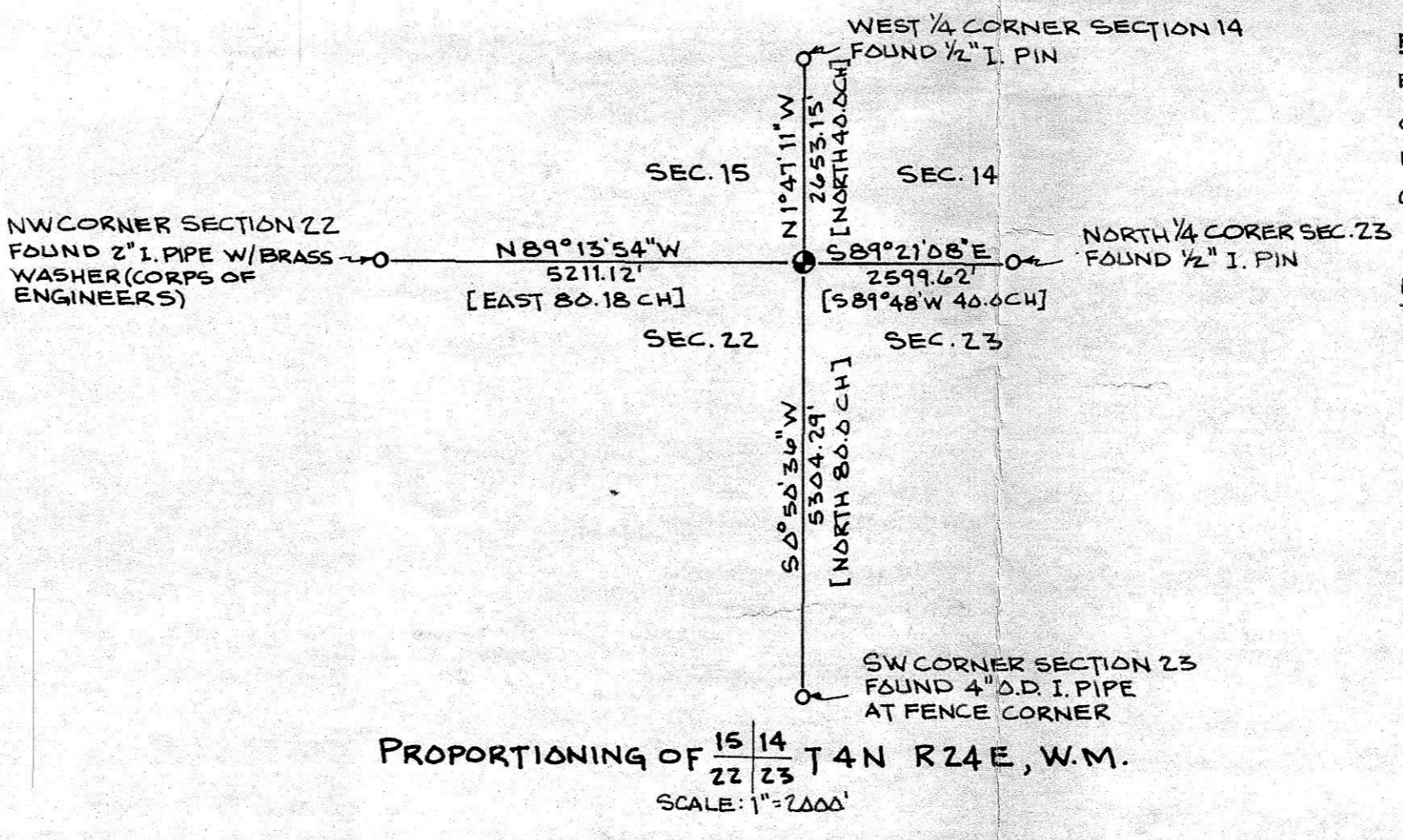
THE PURPOSE OF THIS SURVEY WAS TO ESTABLISH THE BOUNDARIES OF THE NW 1/4 OF THE NW 1/4 OF SECTION 23, TWP 4 N, RGE 24 EAST, W.M. MORROW COUNTY, OREGON, AND TO DEFINE THE BOUNDARIES OF A PORTION OF THE NW 1/4 OF THE NW 1/4 OF SAID SECTION 23 WHICH CONTAINS A ROCK PIT. AFTER SEARCHING MORROW COUNTY SURVEYORS OFFICE RECORDS WE DISCOVERED THE NORTHWEST CORNER OF SECTION 23 HAD BEEN SET IN ERROR BY LELAND ASCHER IN 1915. THE SOUTHWEST CORNER OF SECTION 23 WAS CORRECT AS FIELD VERIFIED BY BUISMAN AND KRUMBEIN AS SHOWN ON MAPS C-148-K & B-177-K OF THE MORROW COUNTY SURVEYORS OFFICE. THE LOCATION OF THE SOUTHWEST CORNER OF SECTION 23 WAS ALSO FIELD VERIFIED BY KRUMBEIN ON SAID MAP B-177-K. RECENT SURVEY RECORDS SHOW USE OF A 3" PIPE AND A RAILROAD SPIKE AT THE NORTHEAST CORNER OF SECTION 23. RESEARCH REVEALED THAT THE NORTHEAST CORNER OF SECTION 23 WAS RE-ESTABLISHED IN 1961 BY VERL FRALEY (L.S.# 183) AND THAT A 1/2" I. PIN WAS SET AT THE NORTHEAST CORNER OF SECTION 23, AT THE NORTH 1/4 CORNER OF SECTION 23 AND AT THE NORTHWEST CORNER OF SECTION 23. THE 1/2" I. PIN SET AT THE NORTHEAST CORNER OF SECTION 23 WAS REPLACED WITH A BRASS CAP IN 1981 BY L.S.# 953. WE FOUND THE 1/2" I. PIN AT THE NORTH 1/4 CORNER OF SECTION 23 BUT COULD NOT LOCATE THE 1/2" I. PIN SET BY FRALEY FOR THE NORTHWEST CORNER. THE 3" PIPE NEAR THE NORTHEAST CORNER OF SECTION 23 WAS SET BY FRALEY IN 1961 TO REPRESENT A PROPERTY CORNER, ACCORDING TO HIS MAP OF SURVEY. THE 1/2" I. PIN AT THE 1/4 CORNER BETWEEN SECTIONS 14 & 15 WAS RE-ESTABLISHED BY THE U.S. DEPARTMENT OF INTERIOR, FISH & WILDLIFE SERVICE, IN 1969, FROM TIES MADE BY THE BONNEVILLE POWER ADMINISTRATION TO THE CORNER FROM THE BONNEVILLE POWER LINE. THE NW CORNER OF SECTION 22 WAS SET BY THE CORPS OF ENGINEERS.

WE USED THE NW CORNER OF SECTION 22, THE WEST 1/4 CORNER OF SECTION 14, THE NORTH 1/4 CORNER OF SECTION 23 AND THE 4" PIPE AT THE SW CORNER OF SECTION 23 TO RE-ESTABLISH THE NW CORNER OF SECTION 23 AS SET FORTH IN THE 1973 MANUAL OF INSTRUCTIONS.

WE THEN SUBDIVIDED THE SECTION 23 AS SHOWN ON THIS MAP.

A 1 SECOND THEODOLITE AND ELECTRONIC DISTANCE MEASURING DEVICE WAS USED FOR MEASUREMENTS.

BEARINGS ARE BASED ON SOLAR OBSERVATION.



REFERENCE MAPS FROM MORROW COUNTY SURVEYORS OFFICE

REF. NO.	SURVEYOR
B-71-K	ASCHER
C-148-K	BUISMAN
B-177-K	KRUMBEIN
C-15-K	ANDERSON
198-K	FRALEY

MAP OF SURVEY OF SEC. 14 T4N, R24E DONE BY U.S. DEPT. OF INTERIOR FISH & WILDLIFE SERVICE.

REGISTERED PROFESSIONAL LAND SURVEYOR

William R. Wells
OREGON
JULY 22, 1977
WILLIAM R. WELLS
1106

RECEIVED BY
Morrow County Surveyor
Date January 19, 1982
Rec'd By M. H. Hagan
No. C-489-K (66)

WALLULIS PROJECT NO:
81-131
AGENCY PROJECT NO:

PROJECT:
SURVEY FOR
EUCON CORP.
LOCATED IN THE NW 1/4 OF SECTION
23, TWP 4N, RGE 24E, W.M.,
MORROW COUNTY, OREGON

WALLULIS & ASSOCIATES, INC.
ENGINEERING & PLANNING
5 S. E. NYE AVENUE
PENDLETON, OREGON 97801
503 - 276 - 1598

SCALE: AS SHOWN	DATE: 11-3-81	DES BY: GEF	DR BY: WRW	CK BY: WRW
--------------------	------------------	----------------	---------------	---------------

TITLE:

REVISIONS

DRAWING:

SHEET 1 OF 1

C-489-K- [redacted]