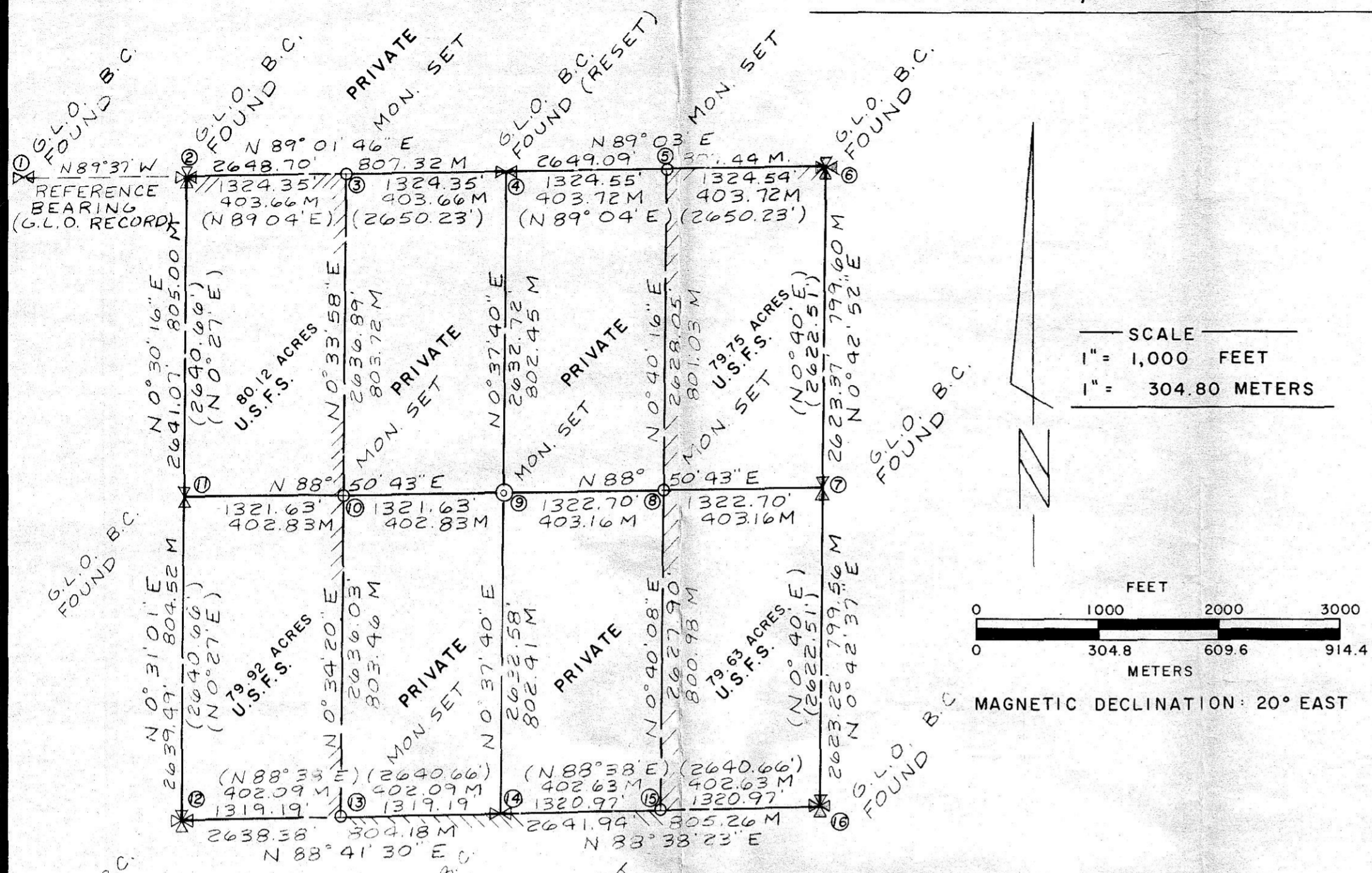
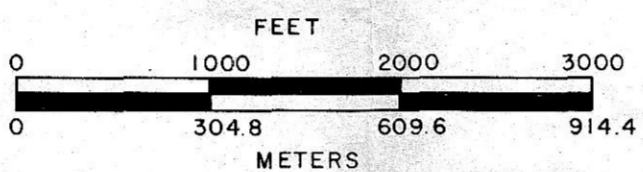


SECTION 21, TOWNSHIP 5 S., RANGE 28 E.W.M.



SCALE
1" = 1,000 FEET
1" = 304.80 METERS



MAGNETIC DECLINATION: 20° EAST

G.L.O. B.C. FOUND DENOTES GENERAL LAND OFFICE MONUMENT, SET IN CONNECTION WITH DEPENDENT RESURVEY AUTHORIZED 1938, APPROVED FEB. 21, 1941

MONUMENT SET DENOTES 2 1/2 INCH ALUM PIPE, 30 INCHES LONG, SET 2 FEET IN GROUND, WITH ALUM. CAP MARKED AS PER MANUAL OF INSTRUCTIONS, 1973, ALSO WITH "R.L.S. 1024".

////////// LINE POSTED THIS CONTRACT, 6 FOOT STEEL POST WITH U.S.F.S. SIGN 54-2.

OLD B.T. DENOTES EXISTING BEARING TREE.

NEW B.T. DENOTES BEARING TREE MARKED WITH THIS SURVEY.

NEW B.T. DENOTES BEARING TREE MARKED THIS SURVEY TO REPLACE OR SUPPLEMENT EXISTING BEARING TREE WHICH IS DEAD OR IN QUESTIONABLE CONDITION.

GENERAL NOTES

BEARINGS SHOWN BY THIS SURVEY ARE RELATIVE TO THE SOUTH LINE OF THE SOUTHEAST QUARTER OF SECTION 17, TOWNSHIP 5 SOUTH, RANGE 28 E.W.M., AS BEING NORTH 89°37' WEST BETWEEN EXISTING MONUMENTS AS FOUND. BASED ON G.L.O. RECORD 1941.

BEARINGS AND DISTANCES SHOWN IN PARENTHESIS ARE FROM 1938 DEPENDENT RESURVEY. ALL OTHERS ARE FROM ACTUAL FIELD MEASURE.

SEE CERTIFIED RECORD OF LAND CORNER MONUMENTATION FORM FOR EACH CORNER, FILED CONCURRENTLY WITH THIS PLAT.

MAP NO.	DESCRIPTION AND/OR ACCESSORIES		
1	S 1/4 CORNER, SECTION 17,	FOUND G.L.O. BRASS CAP, MARKED AS PER RECORD, FROM WHICH BEARS---	
	OLD B.T. 19" L.P. PINE N 69° E	188.5 FT.	
	(RECORD 18" L.P. PINE N 70° E	188.1 FT.)	
	NEW B.T. 11" L.P. PINE N 50 1/2° E	240.8 FT.	
	OLD B.T. 24" L.P. PINE S 74° E	216.5 FT.	
	(RECORD 20" L.P. PINE S 73° E	216.5 FT.)	
	NEW B.T. 16" L.P. PINE S 35° W	246.7 FT.	
2	NW CORNER, SECTION 21,	FOUND G.L.O. BRASS CAP, MARKED AS PER RECORD FROM WHICH BEARS---	
	OLD B.T. 26" WHITE FIR N 55° E	52.8 FT.	
	(RECORD 15" WHITE FIR N 55° E	52.8 FT.)	
	OLD B.T. 20" WHITE FIR S 47° E	30.5 FT.	
	(RECORD 13" WHITE FIR S 47° E	30.4 FT.)	
	OLD B.T. 13" WHITE FIR S 22° W	11.9 FT.	
	(RECORD 5" WHITE FIR S 22° W	11.9 FT.)	
	OLD B.T. 26" STUMP N 80° W	17.6 FT.	
	(RECORD 25" WHITE FIR N 80° W	17.2 FT.)	
	NEW B.T. 8" WHITE FIR N 48° W	17.2 FT.	

MAP NO.	DESCRIPTION AND/OR ACCESSORIES		
3	W 1/16 CORNER, NORTH LINE SECTION 21,	SET 2 1/2" ALUM. PIPE MONUMENT, MARKED AS PER MANUAL OF INSTRUCTIONS, 1973, (R.L.S. 1024), FROM WHICH BEARS---	
	NEW B.T. 7" WHITE FIR N 1° W	29.5 FT.	
	NEW B.T. 11" WHITE FIR S 21° W	40.6 FT.	
4	N 1/4 CORNER SECTION 21,	FOUND G.L.O. BRASS CAP, MARKED AS PER RECORD, FROM WHICH BEARS---	
	OLD B.T. 30" SPRUCE N 29° W	102.3 FT.	
	(RECORD 17" WHITE FIR N 29° W	102.3 FT.)	
	OLD B.T. 30" TAMMARACK S 6° W	90.4 FT.	
	(RECORD 33" TAMMARACK S 6° W	90.4 FT.)	
	NEW B.T. 14" SPRUCE S 45 1/2° W	40.2 FT.	
5	E 1/16 CORNER, NORTH LINE SECTION 21,	SET 2-1/2" ALUM. PIPE MONUMENT, MARKED AS PER MANUAL OF INSTRUCTIONS, 1973, (R.L.S. 1024), FROM WHICH BEARS---	
	NEW B.T. 6" L.P. PINE N 33° E	19.2 FT.	
	NEW B.T. 14" SPRUCE S 8° W	48.2 FT.	
6	NE CORNER SECTION 21,	FOUND G.L.O. BRASS CAP, MARKED AS PER RECORD, FROM WHICH BEARS---	
	OLD B.T. 20" STUMP N 45° E	40.3 FT.	
	(RECORD 20" SPRUCE N 42° E	40.3 FT.)	
	NEW B.T. 10" SPRUCE N 42° E	39.6 FT.	
	OLD B.T. 38" TAMMARACK S 61° E	17.0 FT.	
	(RECORD 30" TAMMARACK S 65° E	17.2 FT.)	
	OLD B.T. 14" WHITE FIR N 69° W	13.1 FT.	
	(RECORD 8" WHITE FIR N 70° W	13.2 FT.)	
	OLD B.T. 18" SPRUCE S 55° W	39.0 FT.	
	(RECORD 14" SPRUCE S 50° W	38.9 FT.)	
7	E 1/4 CORNER SECTION 21,	FOUND G.L.O. BRASS CAP, MARKED AS PER RECORD, FROM WHICH BEARS---	
	OLD B.T. 13" FIR N 29° E	24.9 FT.	
	(RECORD 8" WHITE FIR N 29° E	25.7 FT.)	
	OLD B.T. 26" FIR N 73 1/2° W	54.2 FT.	
	(RECORD 26" DOUG FIR N 72° W	54.1 FT.)	
	NEW B.T. 12" WHITE FIR N 12 1/2° W	34.2 FT.	
8	CE 1/16 CORNER, SECTION 21,	SET 2-1/2" ALUM. PIPE MONUMENT, MARKED AS PER MANUAL OF INSTRUCTIONS, 1973, (R.L.S. 1024), FROM WHICH BEARS---	
	NEW B.T. 11" WHITE FIR N 29° E	22.4 FT.	
	NEW B.T. 11" WHITE FIR S 5° W	22.4 FT.	
9	C 1/4 CORNER, SECTION 21,	SET 2-1/2" ALUM. PIPE MONUMENT, MARKED AS PER MANUAL OF INSTRUCTIONS, 1973, (R.L.S. 1024), FROM WHICH BEARS---	
	NEW B.T. 10" FIR N 28° E	9.0 FT.	
	NEW B.T. 21" SPRUCE N 40° W	45.7 FT.	
10	CW 1/16 CORNER, SECTION 21,	SET 2-1/2" ALUM. PIPE MONUMENT, MARKED AS PER MANUAL OF INSTRUCTIONS, 1973, (R.L.S. 1024), FROM WHICH BEARS---	
	NEW B.T. 10" L.P. PINE N 59° W	193.1 FT.	
	NEW R.M. ALUM. PIPE MON. S 58° W	47.64 FT.	

MAP NO.	DESCRIPTION AND/OR ACCESSORIES		
11	W 1/4 CORNER, SECTION 21,	FOUND, G.L.O. BRASS CAP, MARKED AS PER RECORD FROM WHICH BEARS---	
	OLD B.T. 14" L.P. PINE S 82° E	17.8 FT.	
	(RECORD 10" L.P. PINE S 86° E	17.8 FT.)	
	OLD B.T. 14" SPRUCE S 23° W	29.0 FT.	
	(RECORD 5" WHITE FIR S 22° W	29.0 FT.)	
12	SW CORNER, SECTION 21,	FOUND G.L.O. BRASS CAP, MARKED AS PER RECORD, FROM WHICH BEARS---	
	OLD B.T. 28" DOUG FIR N 16° E	91.3 FT.	
	(RECORD 28" DOUG FIR N 14° E	91.3 FT.)	
	NEW B.T. 14" DOUG FIR N 39° E	140.2 FT.	
	OLD B.T. 28" DOUG FIR S 17° E	19.6 FT.	
	(RECORD 15" DOUG FIR S 20° E	19.6 FT.)	
	OLD B.T. 14" PINE S 18° W	32.1 FT.	
	(RECORD 13" PINE S 13° W	32.1 FT.)	
	NEW B.T. 8" WHITE FIR S 29° W	38.1 FT.	
	OLD B.T. 22" WHITE FIR N 32° W	142.7 FT.	
	(RECORD 13" DOUG FIR N 33° W	143.2 FT.)	
13	W 1/16 CORNER, SOUTH LINE OF SECTION 21,	SET 2-1/2" ALUM. PIPE MONUMENT, MARKED AS PER MANUAL OF INSTRUCTIONS, 1973, (R.L.S. 1024), FROM WHICH BEARS---	
	NEW B.T. 10" SPRUCE N 21° W	18.5 FT.	
	NEW B.T. 10" SPRUCE S 3° W	12.6 FT.	
14	S 1/4 CORNER, SECTION 21,	FOUND G.L.O. BRASS CAP, MARKED AS PER RECORD, FROM WHICH BEARS---	
	OLD B.T. 8" L.P. PINE N 49° E	27.0 FT.	
	(RECORD 8" L.P. PINE N 49° E	27.1 FT.)	
	NEW B.T. 8" L.P. PINE N 62° W	30.4 FT.	
	OLD B.T. 10" L.P. PINE S 6° E	30.8 FT.	
	(RECORD 7" L.P. PINE S 12° E	30.4 FT.)	
15	EAST 1/16 CORNER, SOUTH LINE SECTION 21,	SET 2-1/2" ALUM. PIPE MONUMENT, MARKED AS PER MANUAL OF INSTRUCTIONS, 1973, (R.L.S. 1024), FROM WHICH BEARS---	
	NEW B.T. 10" L.P. PINE N 36° W	42.7 FT.	
	NEW B.T. 14" FIR S 1° W	48.2 FT.	
16	SE CORNER, SECTION 21,	FOUND G.L.O. BRASS CAP, MARKED AS PER RECORD, FROM WHICH BEARS---	
	OLD B.T. 20" WHITE FIR N 14° E	40.9 FT.	
	(RECORD 13" DOUG FIR N 14° E	40.9 FT.)	
	NEW B.T. 18" FIR N 26° E	18.5 FT.	
	OLD B.T. 20" WHITE FIR S 49° E	42.6 FT.	
	(RECORD 10" DOUG FIR S 51° E	42.6 FT.)	
	OLD B.T. 32" WHITE FIR S 54° W	21.4 FT.	
	(RECORD 25" DOUG FIR S 54° W	21.8 FT.)	
	OLD B.T. 34" WHITE FIR N 26° W	79.2 FT.	
	(RECORD 19" WHITE FIR N 26° W	79.2 FT.)	

SURVEYOR'S CERTIFICATE

I, THOMAS F. UPTON, LAND SURVEYOR REGISTERED IN THE STATE OF OREGON, HEREBY CERTIFY THAT THIS PLAT AND THE NOTES HEREON ARE A CORRECT REPRESENTATION OF A SURVEY CONDUCTED BY ME, OR UNDER MY DIRECTION, IN OCTOBER OF 1981, FOR THE U.S. FOREST SERVICE, IN ACCORDANCE WITH THE STATUTES OF THE STATE OF OREGON AND WITH THE ARTICLES OF MY CONTRACT.

THOMAS F. UPTON
CERTIFICATE NO. R.L.S. 1024

TEXAS 1982 CADASTRAL SURVEY
(CONTRACT NO. 53-04 R3-1-01229)

UPTON LAND SURVEYING		
1802 FRUITVALE BLVD.		TELEPHONE
YAKIMA WASHINGTON		248-1176
REGISTERED PROFESSIONAL LAND SURVEYOR	CADASTRAL SURVEY FOR	
THOMAS F. UPTON 1024	UMITILLA NATIONAL FOREST MORROW COUNTY OREGON	
SEC. 21, T-5 S., R-28 E.W.M.		
DRAWN C.U.	FIELD M.S.	CHECKED T.U.
SCALE NOTED		JOB NO. 81077
DATE		12-31-81

RECEIVED BY

MORROW COUNTY SURVEYOR *David H. Krumbein*

DATE *January 12, 1982*

RECEIVED BY *Martha A. Hughes*

NO. *C-460-K*