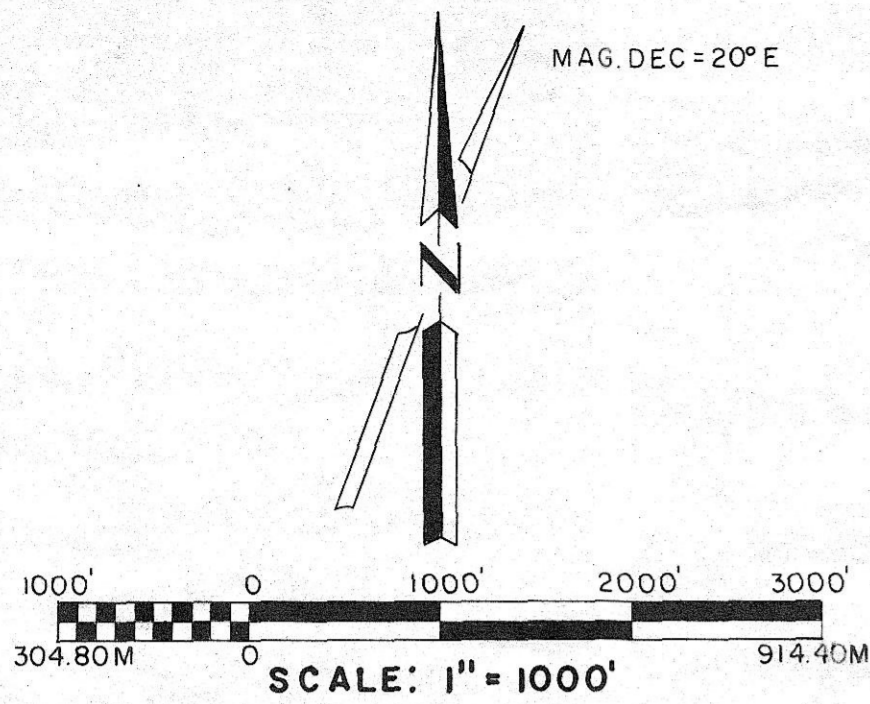


CORNER ACCESSORIES & MARKS ON BRASS CAP MONUMENTS SET

See corresponding No. on map below. Twp., Range, date & PLS 848 are also stamped on all monuments. All Bearing Trees are scribed in accordance with B.L.M. Manual of Instruction. See Certified Record of Land Corner Monumentation, as filed in the office of the Umatilla Co. Surveyor, for complete description of History, Evidence Found, Monument Set & Accessories Established. All Bearing Trees have Brass Washers stamped PLS 848 nailed above BT scribing & Bearing Tree signs nailed above blaze, painted a red band around each tree at breast height.

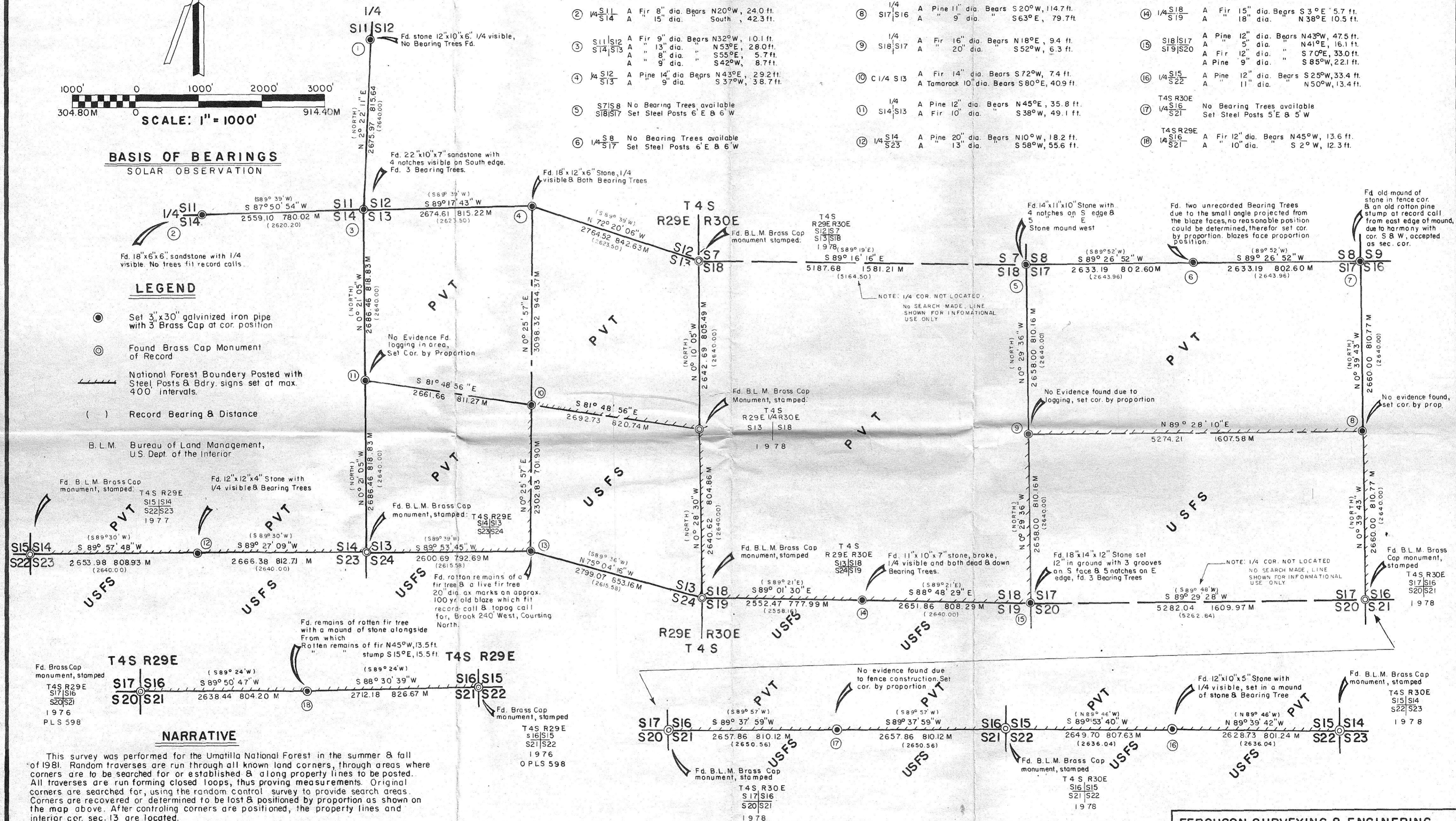
- ① 1/4 S11/S12 A Fir 15" dia. Bears N28°W, 16.9 ft.
9" dia. Bears S18°E, 14.7 ft.
- ② 1/4 S11/S14 A Fir 6" dia. Bears N20°W, 24.0 ft.
15" dia. " South, 42.3 ft.
- ③ S11/S12 A Fir 9" dia. Bears N32°W, 10.1 ft.
S14/S13 A " 13" dia. " N53°E, 28.0 ft.
A " 8" dia. " S55°E, 5.7 ft.
A " 9" dia. " S42°W, 8.7 ft.
- ④ 1/4 S12/S13 A Pine 14" dia. Bears N43°E, 29.2 ft.
9" dia. " S37°W, 38.7 ft.
- ⑤ S7/S8 No Bearing Trees available
S18/S17 Set Steel Posts 6' E & 6' W
- ⑥ 1/4 S8/S17 No Bearing Trees available
Set Steel Posts 6' E & 6' W
- ⑦ S8/S9 No Bearing Trees available
S17/S16 Set Steel Post North alongsid Cor.
- ⑧ 1/4 S17/S16 A Pine 11" dia. Bears S20°W, 114.7 ft.
9" dia. " S63°E, 79.7 ft.
- ⑨ 1/4 S18/S17 A Fir 16" dia. Bears N18°E, 9.4 ft.
20" dia. " S52°W, 6.3 ft.
- ⑩ C 1/4 S13 A Fir 14" dia. Bears S72°W, 7.4 ft.
A Tamarack 10" dia. Bears S80°E, 40.9 ft.
- ⑪ 1/4 S14/S13 A Pine 12" dia. Bears N45°E, 35.8 ft.
A Fir 10" dia. " S38°W, 49.1 ft.
- ⑫ 1/4 S14/S23 A Pine 20" dia. Bears N10°W, 18.2 ft.
A " 13" dia. " S58°W, 55.6 ft.
- ⑬ 1/4 S13/S24 A Fir 10" dia. Bears N72°E, 21.7 ft.
A " 9" dia. " S16°E, 16.6 ft.
- ⑭ 1/4 S18/S19 A Fir 15" dia. Bears S3°E, 5.7 ft.
A " 18" dia. " N38°E, 10.5 ft.
- ⑮ S18/S17 A Pine 12" dia. Bears N43°W, 47.5 ft.
S19/S20 A " 5" dia. " N41°E, 16.1 ft.
A Fir 12" dia. " S70°E, 33.0 ft.
A Pine 9" dia. " S85°W, 2.2 ft.
- ⑯ 1/4 S15/S22 A Pine 12" dia. Bears S25°W, 33.4 ft.
A " 11" dia. " N50°W, 13.4 ft.
- ⑰ T4S R30E 1/4 S16/S21 No Bearing Trees available
Set Steel Posts 5' E & 5' W
- ⑱ T4S R29E 1/4 S16/S21 A Fir 12" dia. Bears N45°W, 13.6 ft.
A " 10" dia. " S2°W, 12.3 ft.



BASIS OF BEARINGS
SOLAR OBSERVATION

LEGEND

- Set 3"x30" galvanized iron pipe with 3" Brass Cap at cor. position
 - ⊙ Found Brass Cap Monument of Record
 - National Forest Boundary Posted with Steel Posts & Bdry. signs set at max. 400' intervals.
 - () Record Bearing & Distance
- B. L. M. Bureau of Land Management, U.S. Dept. of the Interior



NARRATIVE

This survey was performed for the Umatilla National Forest in the summer & fall of 1981. Random traverses are run through all known land corners, through areas where corners are to be searched for or established & along property lines to be posted. All traverses are run forming closed loops, thus proving measurements. Original corners are searched for, using the random control survey to provide search areas. Corners are recovered or determined to be lost & positioned by proportion as shown on the map above. After controlling corners are positioned, the property lines and interior cor. sec. 13 are located.

Electronic distance measuring equipment & theodolite are used in performing the field control and the location of corners & lines. Computing was completed using a Hewlett Packard-85 computer.

All field notes, computations & positioning data are on file in the office of Ferguson Surveying & Engineering, Mt. Vernon, Oregon.

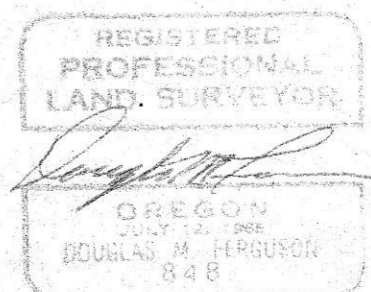
I, Douglas M. Ferguson, Registered Professional Surveyor in the State of Oregon, hereby certify that this plat and the notes hereon or attached are a correct representation of the survey I performed, as outlined above, in accordance with the statute of the State of Oregon and with the articles of my contract.

Douglas M. Ferguson /s/ Douglas M. Ferguson
Registered Professional Land Surveyor
Oregon Licence 848

HISTORY

T4S, R.29E Surveyed in 1882, by Edward W. Sanderson under General Land Office contract No. 417.
T4S, R.30E. Surveyed in 1882, by George S. Pershin under General Land Office contract No. 430.
In 1976, Or. PLS 598 re-monumented corners as shown on the map above.
In 1978, the B.L.M. re-monumented corners as shown on the map above.

RECEIVED BY
Morrow County Surveyor
Date: January 7, 1982
Rec'd By: M. Hughes
No. 447-K



FERGUSON SURVEYING & ENGINEERING

MT. VERNON, OR.
MAP OF SURVEY

FORIST BOUNDARY, BETWEEN SEC. 14&23, 13&24, IN SEC. 13 T4S, R29E, WM. AND BETWEEN SEC. 18&19, 18&17, THE E-W CENTER LINE OF SEC. 17, BETWEEN SEC. 17&16, 16&21 & SEC. 15&21 T4S., R.30E. WM.

UMATILLA COUNTY OREGON

FOR: UMATILLA NATIONAL FOREST BY: DOUGLAS M. FERGUSON

DATE: May - Oct. 1981 SHEET 1 of 1

SCALE: 1" = 1000' DRAWN BY D.M.F.