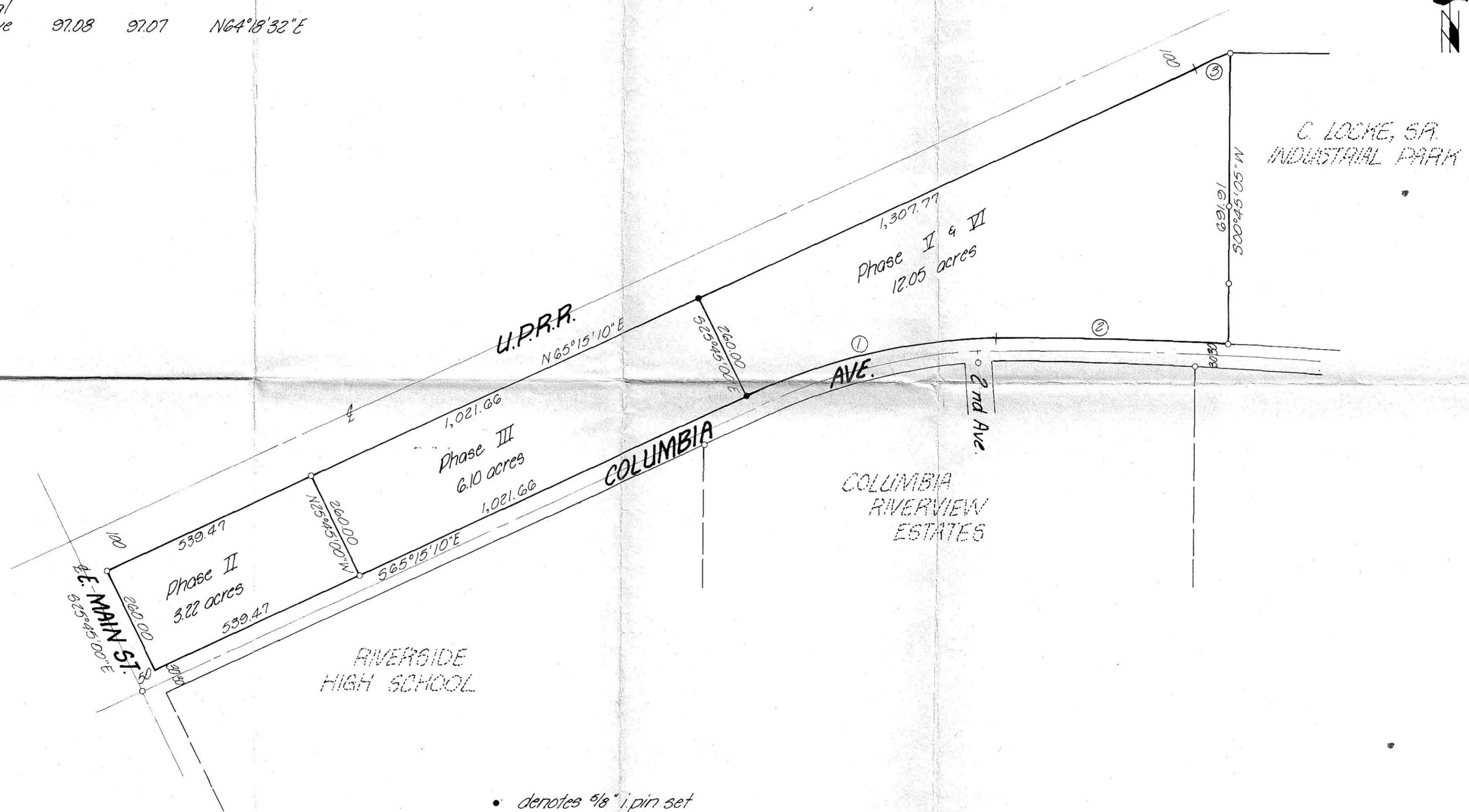


CURVE		DATA		
NO.	RADIUS	ARC	CHORD	BEARING
1.	1,502.67	622.38	617.94	S76°15'26"W
2.	11,489.20	543.21	543.16	S89°23'48"W
3.	spiral curve	97.08	97.07	N64°18'32"E



- denotes 3/8" i. pin set
- denotes 3/8" i. pin find

Bearings and distances are based on:  
 the Plat of C. Locke, Sr. Industrial Park, the Plat of Columbia River-view Estates and a drawing by Krumbein Engineering Co. for L. B. Land Co. dated 8-23-79, no. 79-19B.

RECEIVED BY  
 Morrow County Surveyor  
 Date 9-26-80  
 Rec'd by M.J.  
 No. 388-K

KRUMBEIN ENGINEERING CO. ENGINEERS - SURVEYORS - PLANNERS 221 S. Main, Pendleton, Oregon	SCALE 1" = 200'
	DATE 9-26-80
Survey for <b>PUSKARICH-CRAGMONT</b> located in Sec. 9, T4N, R25E, W.M.	
DRN. BY M.L.J.	DRNG. NO. 80-44C
CKD. BY D.H.H.	

*David H. H.*