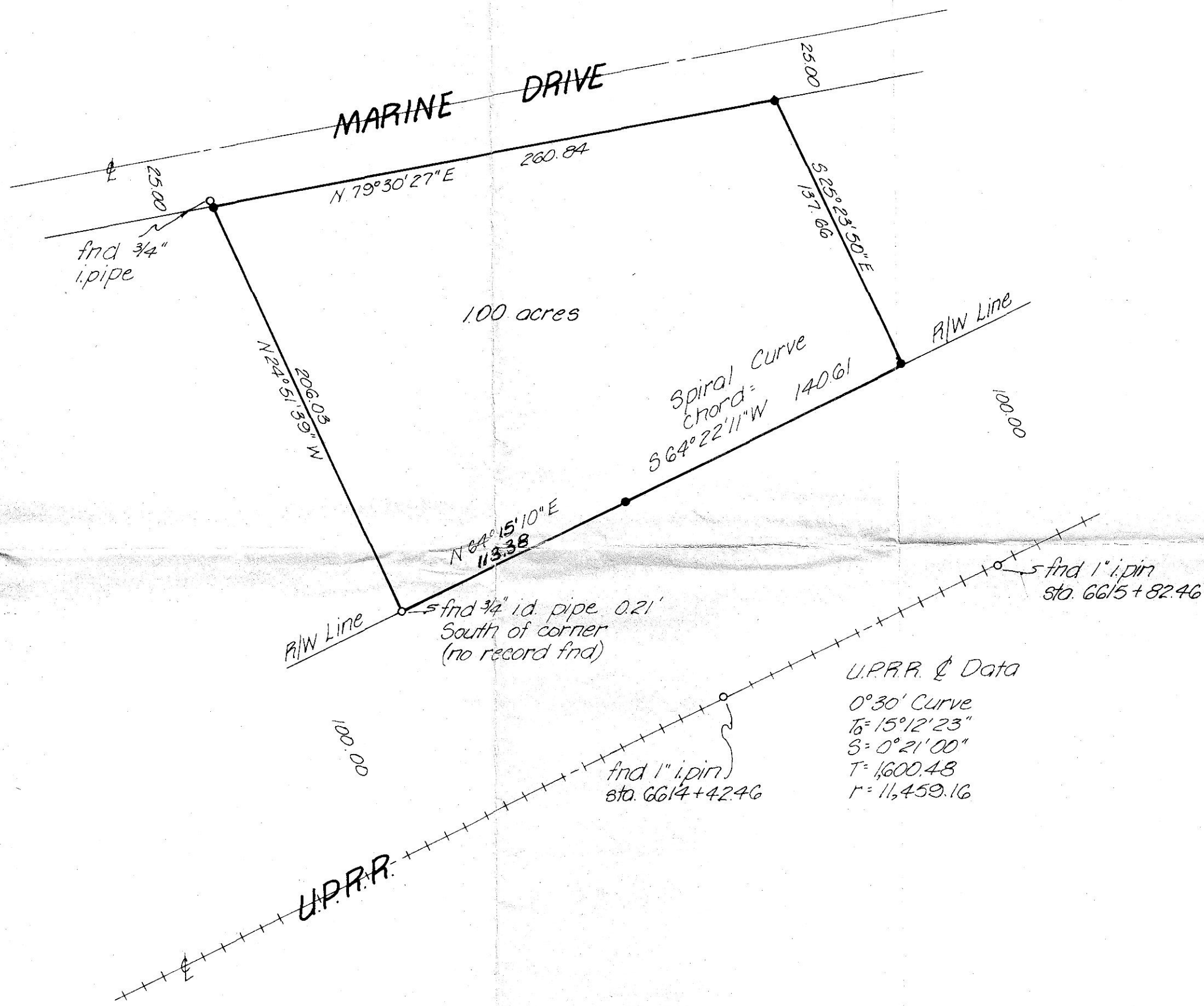


DETAIL "A"  
n.t.s.



NOTES:

1. Bearings and R/R & data based on Krumbein Engineering Ltd. survey for Boardman Development Co. Inc. dated Feb. 26, 1979 drawing no. 79-8C.
2. & of Marine Drive was established by existing asphalt. No monument were found.
3. Held R. Kennedy's East line as found pipes indicated it to lie. Held this line for location and bearing. Did not hold for terminus on either right-of-way (see detail 'A').
4. East line is radial to and if extended would pass through the P.S.C. at & sta. 6615+82.46. U.P.R.R.

o denotes monument find as noted  
• denotes 3/8" i. pin set

RECEIVED BY  
Morrow County Surveyor  
Date 6-25-80  
Rec'd By MJ  
No. 374-K

<p><b>KRUMBEIN ENGINEERING CO.</b> ENGINEERS - SURVEYORS - PLANNERS 221 S. Main, Pendleton, Oregon.</p>	SCALE	1" = 30'	
	DATE	6-2-80	
	DRN. BY	M.L.J.	
	CKD. BY		
Survey for <b>PORT OF MORROW</b> NW 1/4, NE 1/4, Sec. 9, T4N, R25E, W.M.		DRNG. NO.	80-31C