

Section 20, T4N, R25E, W.M.

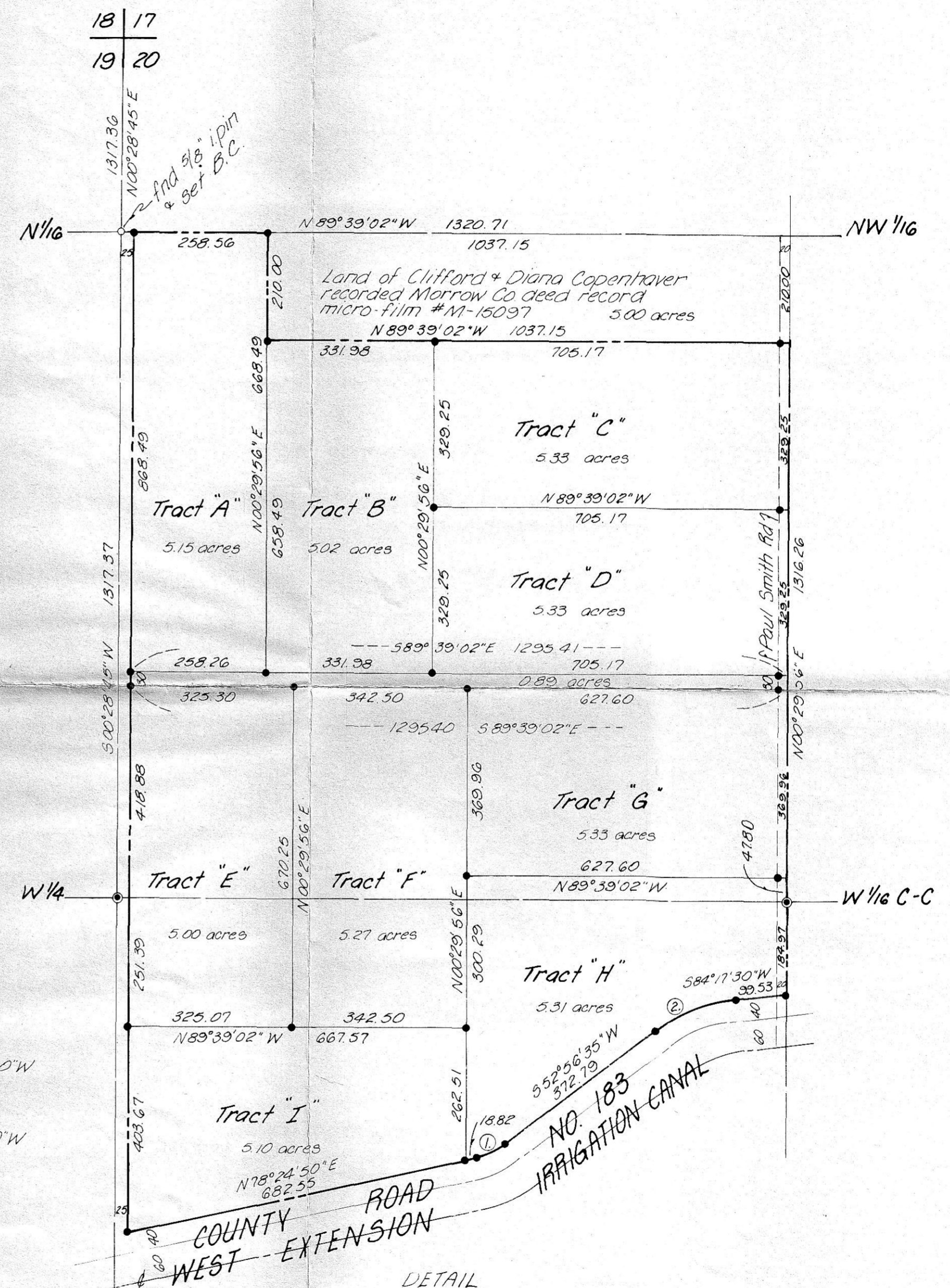
Scale: 1" = 1000'

- denotes Brass Cap set
- denotes 3/8" pin set
- denotes monuments set or find on previous surveys.

Bearings and distances are based on surveys by Krumbain Eng. Ltd.; for Earl Truicleay dated 2-20-76, no. 76-15B and for Jon Starke, dated 12-14-76, no. 76-73C.

Curve data:

- ① r = 143.36
ch = 63.21
ch bearing: S 65° 40' 40" W
- ② r = 313.83
ch = 169.57
ch bearing: S 68° 37' 00" W



Located in the SW 1/4 of the NW 1/4 of Section 20, T4N, R25E, W.M. and also in the NW 1/4 of the SW 1/4 of Section 20; lying northerly of the West Extension Canal R/W.

Scale: 1" = 200'

K	KRUMBAIN ENGINEERING CO. ENGINEERS - SURVEYORS - PLANNERS 221 S. Main, Pendleton, Oregon	SCALE as shown
	Survey for IRV TIPPETT parcel in Section 20, T4N, R25E, W.M.	DATE 5-15-80
		DRN. BY M.L.J.
		CKD BY J.L.C.
		DRNG. NO. 80-295-K (435)

6-15-80
MLD
C-295-K
(435)