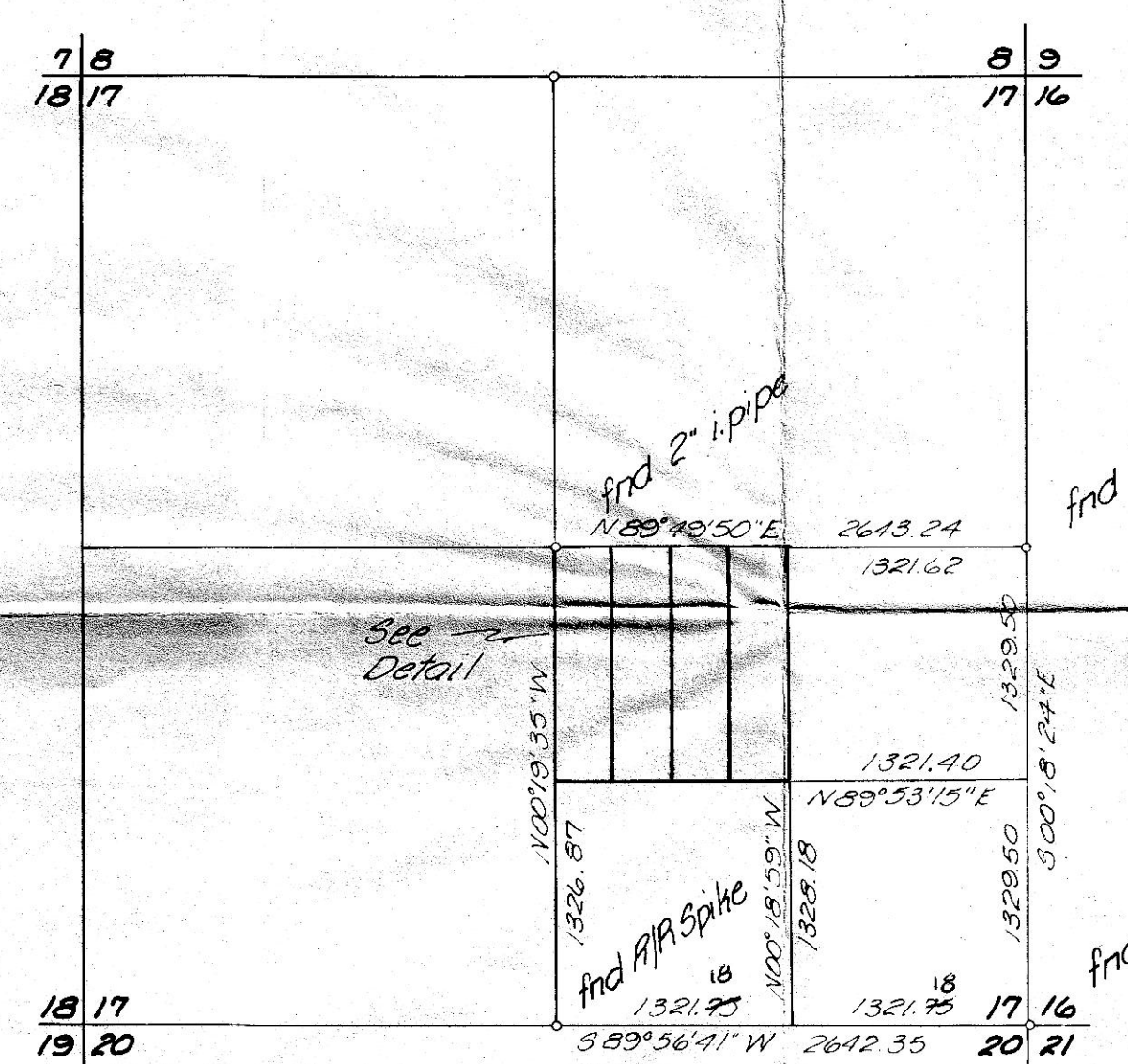
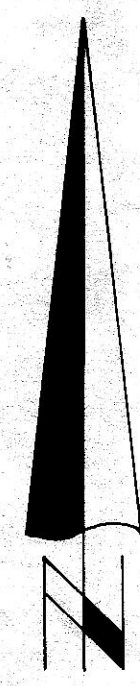
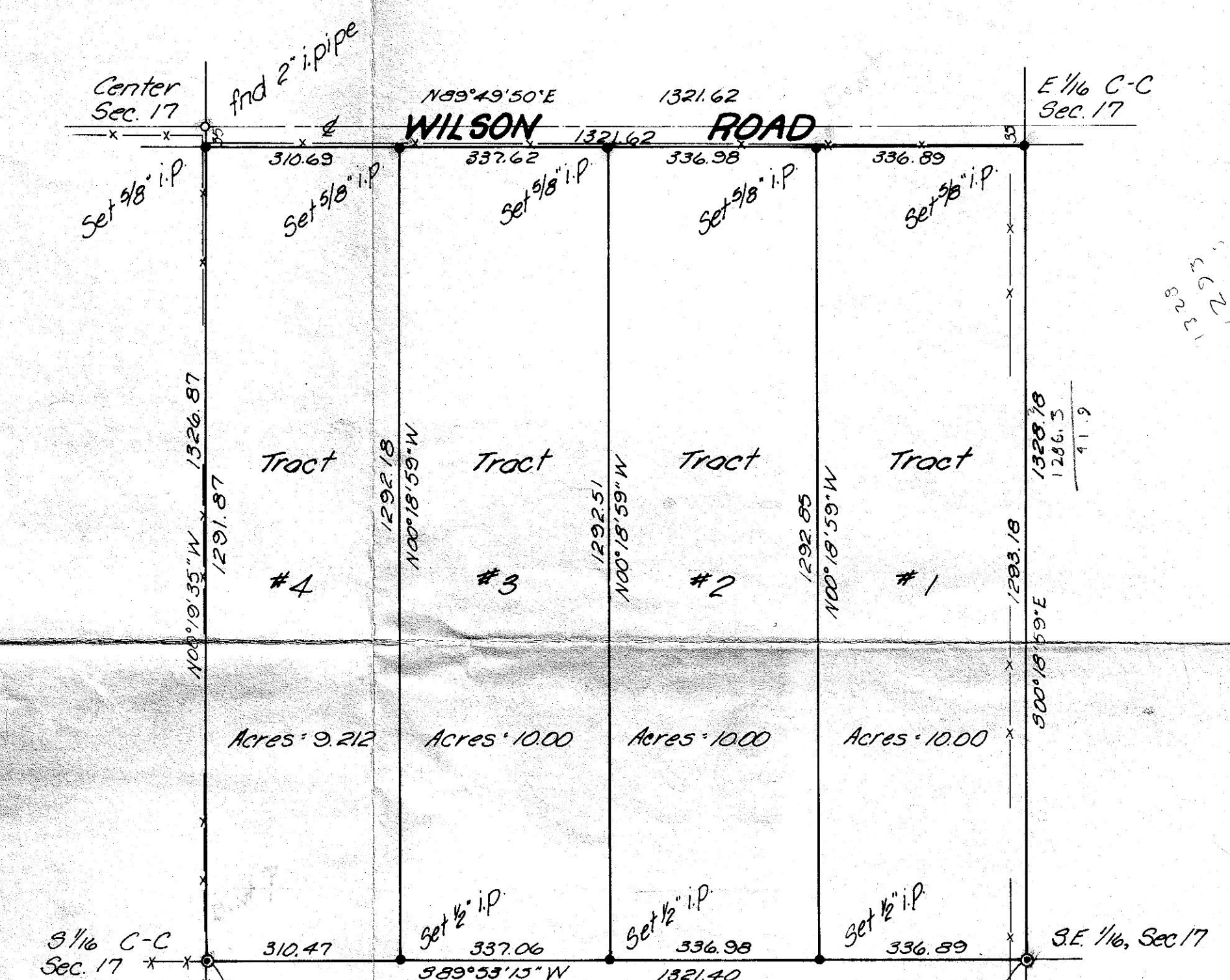


337.62  
 336.98  
 674.60  
 336.89  
 1011.49



Section 17, TAN, R25E, W.M.  
 Scale: 1" = 1000'

- denotes monument set as shown
- denotes monument found as shown
- ◉ denotes Brass Cap set



NW 1/4, SE 1/4, Section 17, TAN, R25E, W.M.  
 Scale: 1" = 200'

310.47  
 337.06  
 677.53  
 336.98  
 984.51

1329.9  
 1321.4  
 8.5

Bearings are based on a survey by  
 Krumbein Engineering for Hillview  
 Estates dated July 8, 1976. Also  
 State Hwy drawing #10C-51-4  
 (Wilson Road) dated Feb. 1979.

3-26-80  
 NMK  
 C-291-K

Revised 3-6-80 MLJ.

David W. Klein

<b>K</b> KRUMBEIN ENGINEERING CO. ENGINEERS - SURVEYORS - PLANNERS 221 S. Main, Pendleton, Oregon	SCALE 0.5" = 1000'
	DATE 2-26-80
Survey for <b>GLEN MOORE</b>	DRN BY M.L.J.
NW 1/4, SE 1/4, Section 17, TAN, R25E, W.M.	CKD BY D.H.K.
	DRNG. NO. 80-BC