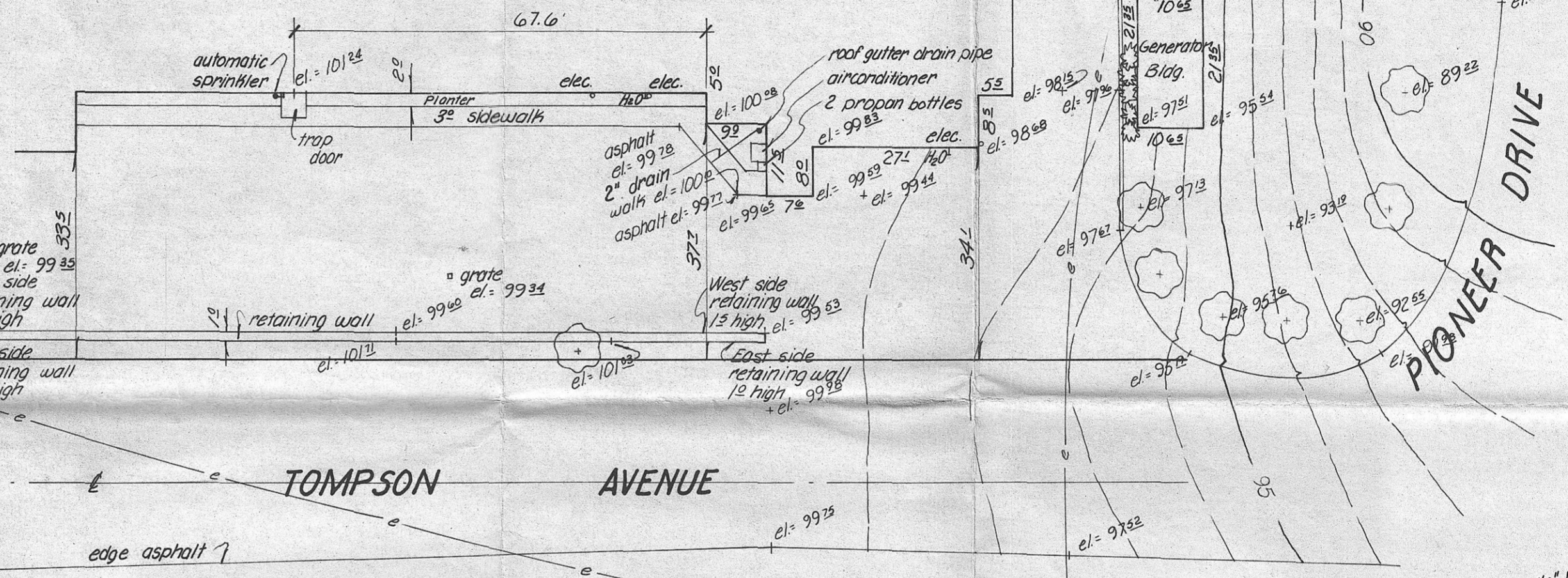


Existing Hospital  
floor el. = 100.00

East line block 4,  
"Heppner Heights"  
(Pioneer Memorial Hospital)



TOMPSON AVENUE

PIONEER DRIVE

SW. cor. lot 5,  
block 1, "Valleyview  
Estates"

NW. cor. lot 5,  
block 1, "Valleyview  
Estates"

RECEIVED BY  
Morrow County Surveyor  
Date 4-10-79  
Rec'd By MJJ  
No. 279-K

REGISTERED  
PROFESSIONAL  
LAND SURVEYOR  
David H. Krumbein  
OREGON  
JULY 17, 1970  
DAVID H. KRUMBEIN  
933

Revised April 30, 1979 MH  
K KRUMBEIN ENGINEERING CO.  
ENGINEERS - SURVEYORS - PLANNERS  
221 S. Main, Pendleton, Oregon  
Topography Survey for  
PIONEER MEMORIAL HOSPITAL  
Heppner, Oregon  
SCALE 1" = 20'  
DATE April 27, 1979  
DRN. BY MH  
CKD. BY J.F.S.  
DRNG. NO. 79-29C