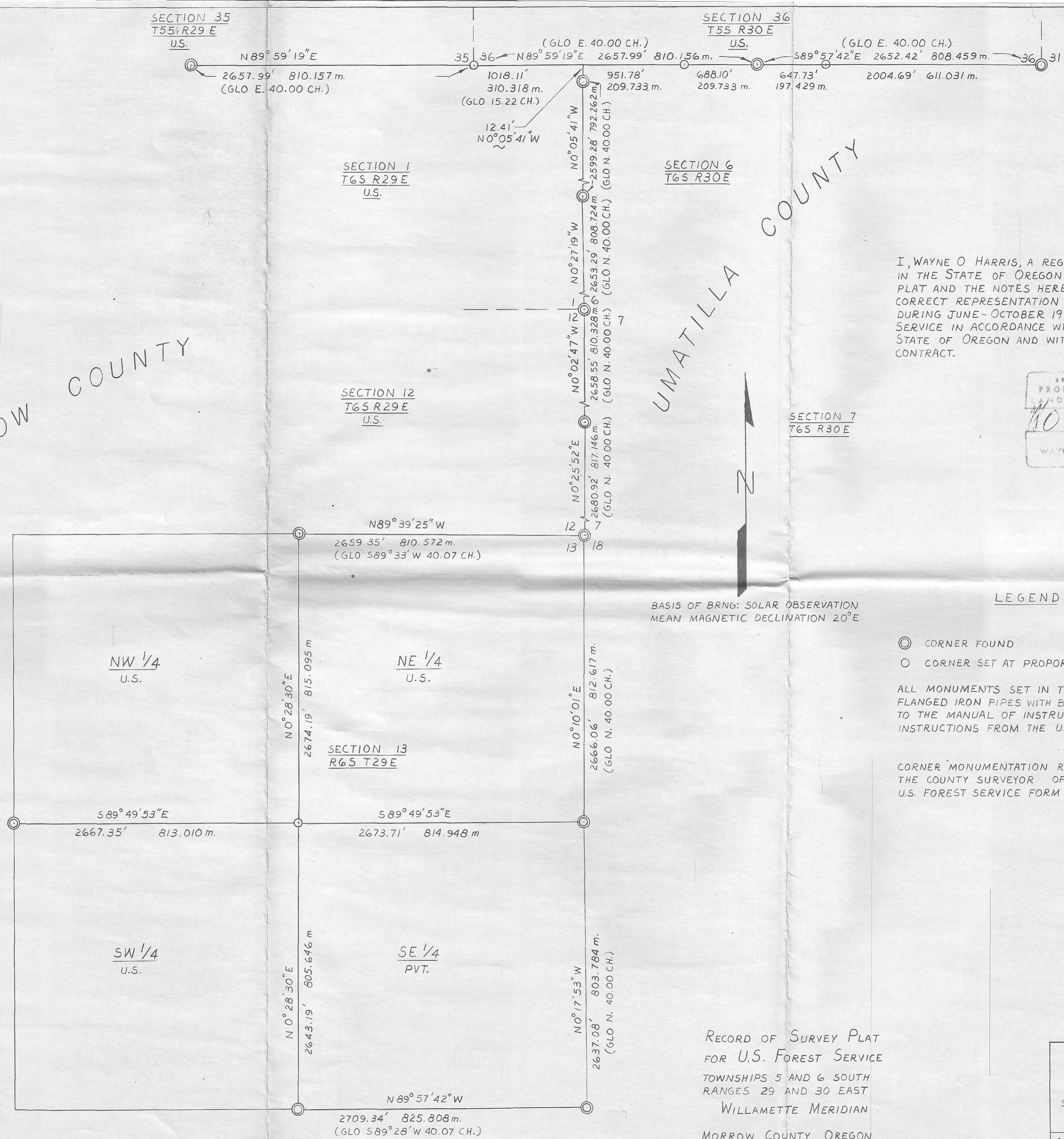
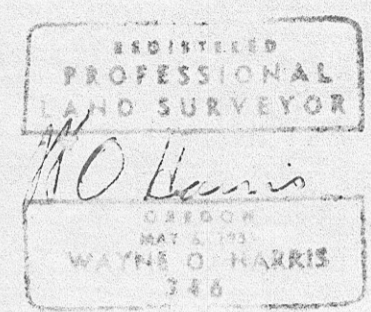


MORROW COUNTY

UMATILLA COUNTY



I, WAYNE O HARRIS, A REGISTERED LAND SURVEYOR IN THE STATE OF OREGON HEREBY CERTIFY THAT THIS PLAT AND THE NOTES HEREON, OR ATTACHED, ARE A CORRECT REPRESENTATION OF A SURVEY PERFORMED DURING JUNE-OCTOBER 1979 FOR THE U.S. FOREST SERVICE IN ACCORDANCE WITH THE STATUTES OF THE STATE OF OREGON AND WITH THE ARTICLES OF MY CONTRACT.



BASIS OF BRNG: SOLAR OBSERVATION
MEAN MAGNETIC DECLINATION 20°E

LEGEND

- ⊙ CORNER FOUND
 - CORNER SET AT PROPORTIONATE DISTANCE
- ALL MONUMENTS SET IN THIS SURVEY ARE 32" x 2" FLANGED IRON PIPES WITH BRASS CAPS MARKED ACCORDING TO THE MANUAL OF INSTRUCTIONS, 1973 AND SPECIAL INSTRUCTIONS FROM THE U.S. FOREST SERVICE
- CORNER MONUMENTATION RECORDS ARE FILED WITH THE COUNTY SURVEYOR OF MORROW COUNTY ON THE U.S. FOREST SERVICE FORM NO. R6-7100-57

RECORD OF SURVEY PLAT
FOR U.S. FOREST SERVICE
TOWNSHIPS 5 AND 6 SOUTH
RANGES 29 AND 30 EAST
WILLAMETTE MERIDIAN
MORROW COUNTY, OREGON

RECEIVED BY
Morrow County Surveyor
Date 10-23-79
Rec'd by [Signature]
NC-# 278-K

WAYNE HARRIS Co. Inc.				
SURVEYORS		PENDLETON, OR		
SCALE	DATE	DRN	CHK	DWG NO

C-278-K-423