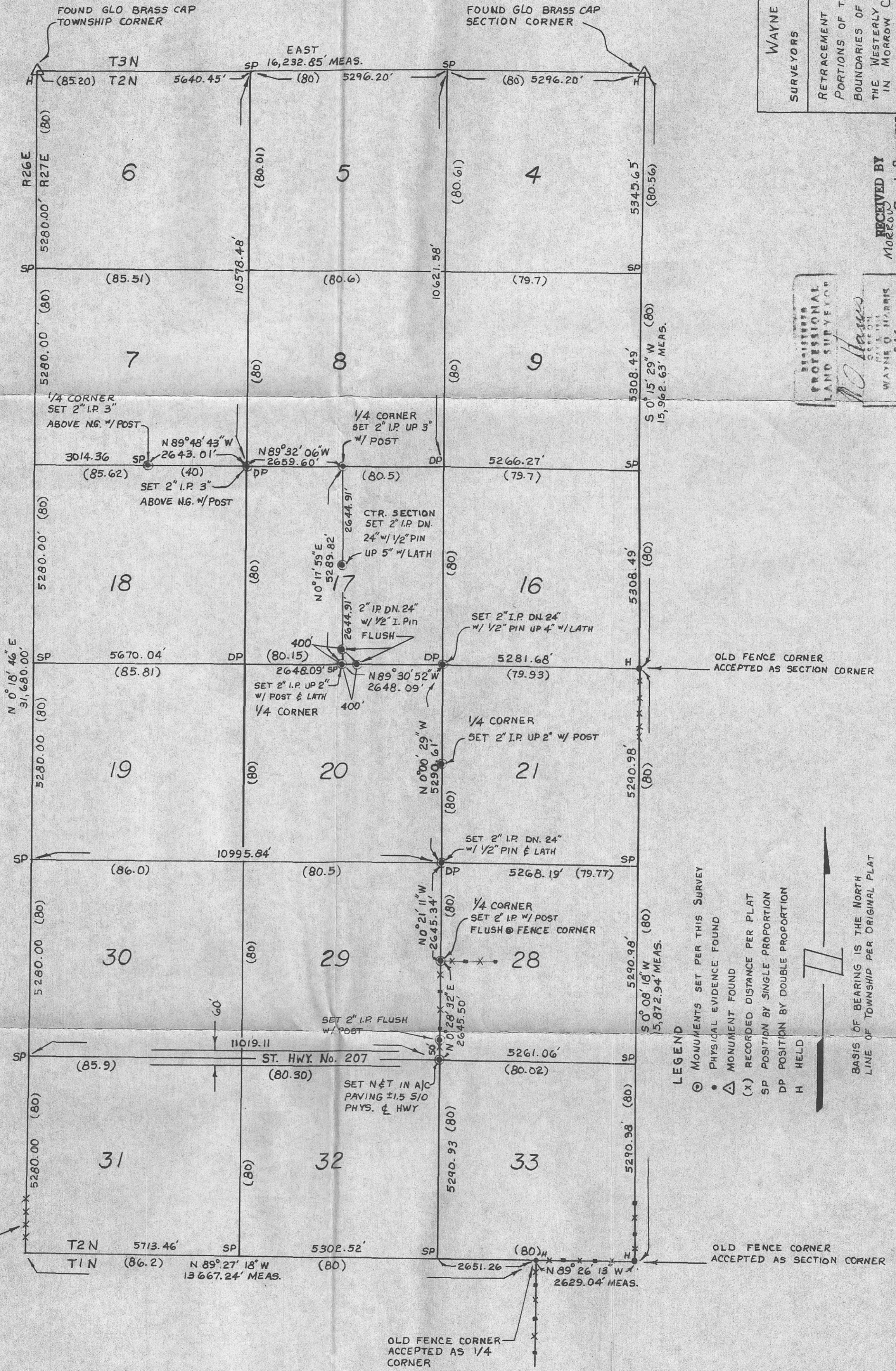


**NOTES:**

- 1) THE S.W. CORNER OF THE TOWNSHIP WAS ESTABLISHED AT RECORD DISTANCE FROM THE GLO MONUMENT AT THE N.W. CORNER, ALONG A LINE FROM SAID MONUMENT THROUGH THE REMAINS OF A VERY OLD FENCE LINE. ONLY A ± 200' LONG PORTION OF THIS FENCE EXISTS (± 800' N/O S.W. TOWNSHIP CORNER.)
- 2) GEORGE CAMPBELL, PROPERTY OWNER, SAID FENCE EXISTED ALONG ENTIRE LENGTH OF THIS RANGE LINE UNTIL ± 1946 WHEN HIS FATHER DISMANTLED IT. HE ALSO STATED THAT FENCE WAS ACCEPTED AS RANGE LINE BY PROPERTY OWNERS. DIRECTION AND DISTANCE EASTERLY PROVIDES GOOD FIT WITH RECORD.
- 3) THE S.W. CORNER OF SECTION 29 WAS ESTABLISHED BY ACCEPTING AND HOLDING FOR ALIGNMENT THE OLD FENCE WHICH RUNS N-S ALONG THE EAST LINE OF THE S.E. 1/4 AND BY A SINGLE PROPORTION OF THE N-S DISTANCE FROM THE ACCEPTED E 1/4 CORNER OF SAID SECTION AND THE PROPORTIONATE POSITION OF THE S.E. CORNER OF SECTION 32. BY THIS METHOD THE CORNER IS ± 1.5 FEET S/O THE PHYSICAL CENTERLINE OF STATE HWY. NO. 207. STATE MAPS INDICATE CENTERLINE OF R/W IS TO BE THE SLY LINE OF SECTION 29.

OLD FENCE LINE IN BOTTOM OF RAVINE HELD FOR LINE ALONG RANGE LINE



- LEGEND**
- ⊙ MONUMENTS SET PER THIS SURVEY
  - PHYSICAL EVIDENCE FOUND
  - △ MONUMENT FOUND
  - (x) RECORDED DISTANCE PER PLAT
  - SP POSITION BY SINGLE PROPORTION
  - DP POSITION BY DOUBLE PROPORTION
  - H HELD

BASIS OF BEARING IS THE NORTH LINE OF TOWNSHIP PER ORIGINAL PLAT

WAYNE HARRIS Co. INC. PENDLETON, OREGON	
SURVEYORS	
RETRACEMENT AND MONUMENTATION OF PORTIONS OF THE EASTERLY AND NORTHERLY BOUNDARIES OF WAGON TRAIL FARMS IN THE WESTERLY HALF OF T2N R27E IN MORROW COUNTY, OREGON	
WILLAMETTE MERIDIAN	
SCALE	DATE
1" = 2000'	10-18-79
CHK	FLM
DRN	FLM
DWG. NO.	79-172-B

RECEIVED BY  
Mogrow  
County Surveyor  
Date 10-29-79  
Rec'd by M.J.J.  
No. CA# 263-K

C-263-K-412

C-263-K-412