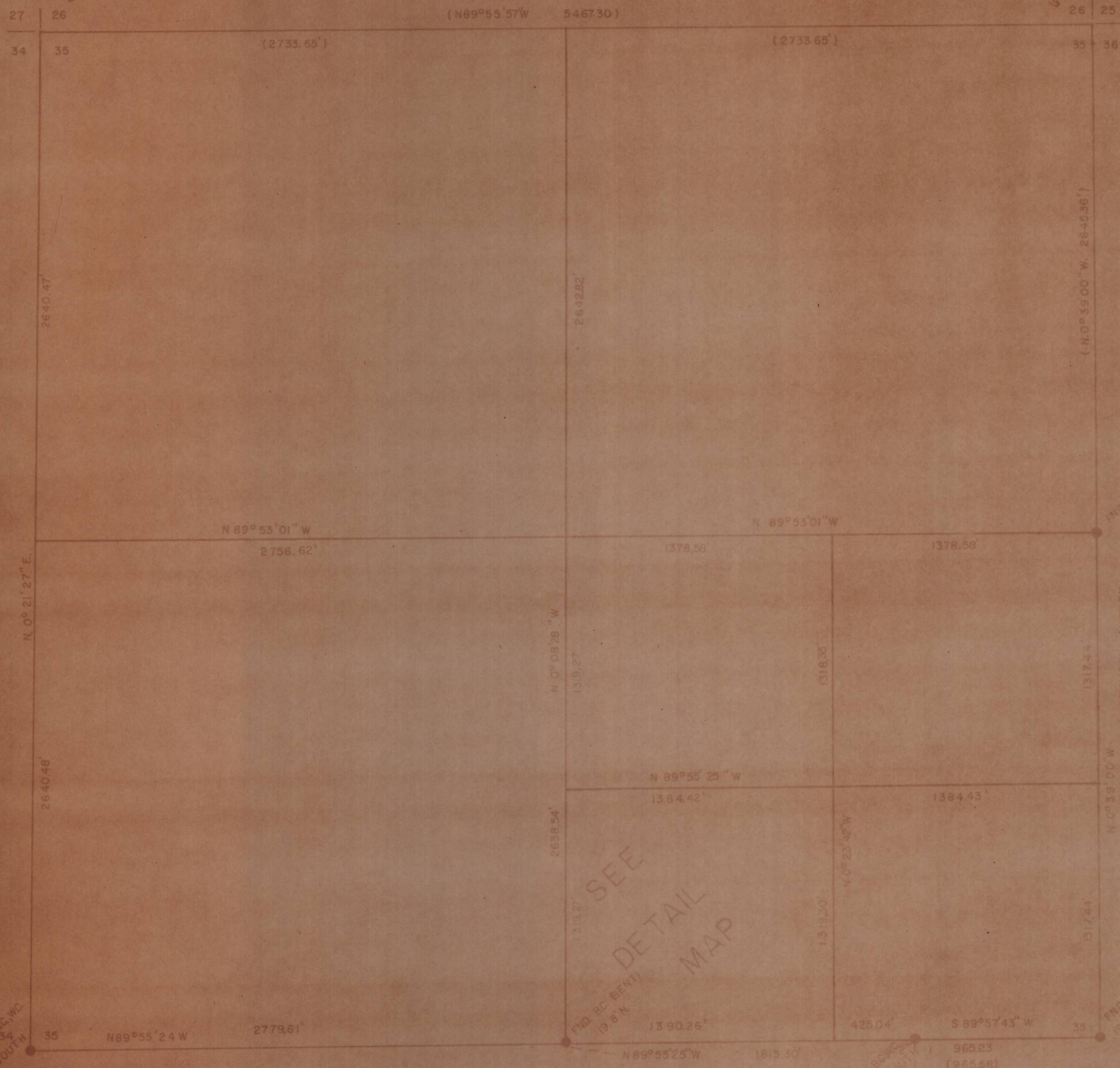
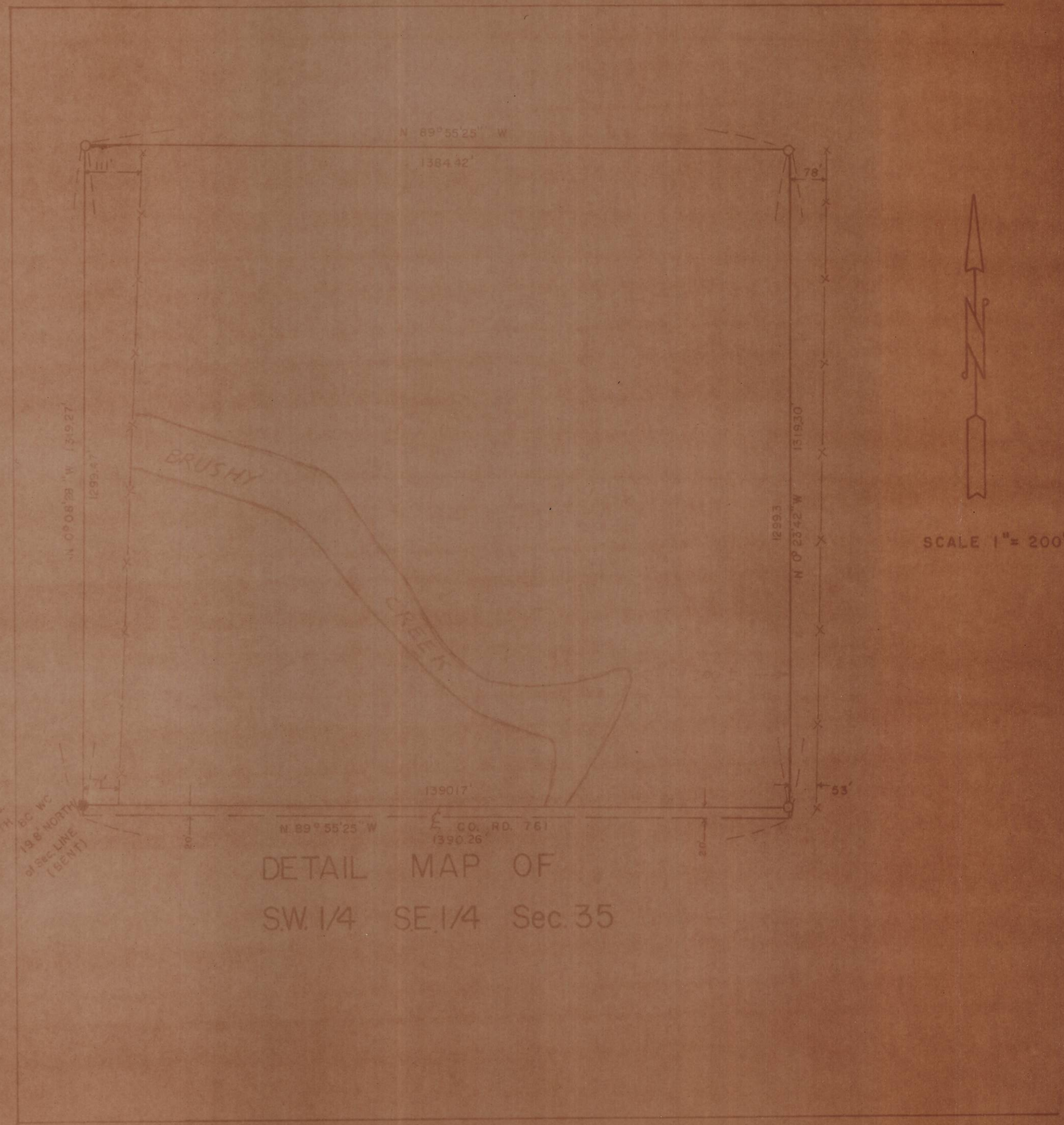


COMPUTED FROM KRUMBEIN SURVEY



SEE  
DETAIL  
MAP



DETAIL MAP OF  
SW 1/4 SE 1/4 Sec. 35

BRASS CAP WITNESS CORNERS ON TOWNSHIP LINE ARE FROM 1940 DEPENDENT RESURVEY BY U.S. DEPT. OF INTERIOR, OF T.4N, R.26E.

404

SURVEY FOR JOE CONFORTH

LOCATION In SE. 1/4

SEC. 35, T.5 N., R. 26 E., W.M., MORROW COUNTY, OREGON

DATE 3-23-79 SCALE 1" = 500'

● MONUMENTS FOUND (OO) OF RECORD

5/8" O IRON RODS SET JOB NO. 57811418

EDWARDS SURVEYING P. O. Box 783  
507-3335 Hamilton, Ore.

RECEIVED BY  
Morrow County Surveyor  
Date 4-26-79  
Rec'd By Yms  
No. C-231-K

REGISTERED  
PROFESSIONAL  
LAND SURVEYOR

*D. Dennis Edwards*

OFFICE  
D. DENNIS EDWARDS  
SURVEYOR

C-231-K-404

C-#231-K