

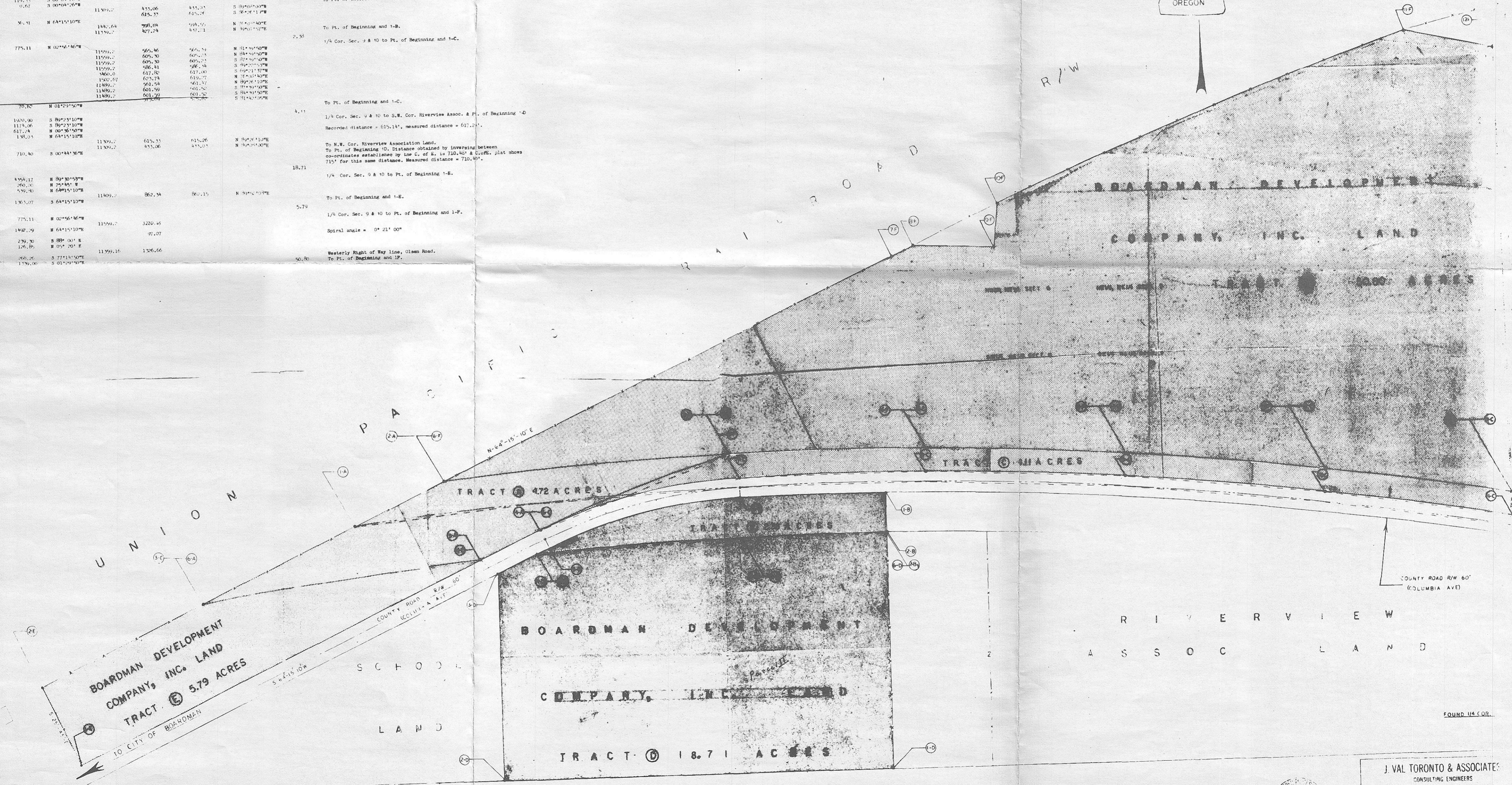
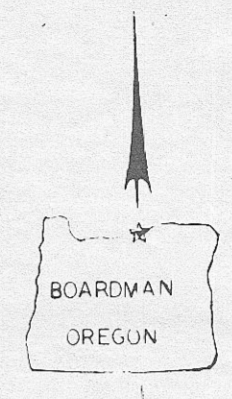
BOARDMAN DEVELOPMENT COMPANY, INC. LAND SURVEY

EXHIBIT "A"

FOUND SECTION CORNER 18A55CAF

TRACT		TRAVERSE		&		CURVE DATA	
FROM	DISTANCE	BEARING	RADIUS	ARC LENGTH	CHORD LENGTH	CHORD BEARING	AREA IN ACRES
Cor. to 1A	466.87	N 78°17'19"W					
1A	118.26	N 64°15'10"E	11599.2	857.98	857.79	N 00°13'57"E	
1A				862.34	817.89	S 04°13'17"E	
1A	180.86	S 64°15'10"W	11599.2	862.34	862.15	S 01°12'42"E	
1A	522.75	N 64°15'10"E	11599.2				
Cor. to 1B	202.27	N 67°16'59"W					
1B	119.55	S 00°08'47"W					
1B	0.67	S 00°08'47"W	11599.2	855.06	855.15	S 09°01'57"E	
1B				815.37	815.27	S 30°11'17"E	
1B	56.91	N 64°15'10"E	11599.2	799.84	798.70	N 11°44'40"E	
1B				827.24	827.13	N 39°02'57"E	
Cor. to 1C	775.11	N 02°56'36"W	11599.2	656.46	656.34	N 01°49'40"E	
1C				609.30	609.15	N 04°49'40"E	
1C				609.30	609.15	S 07°49'40"E	
1C				609.30	609.15	S 04°49'40"E	
1C				617.82	617.00	S 09°11'37"E	
1C				860.0	819.77	N 07°50'49"E	
1C				1502.77	625.74	N 89°21'10"E	
1C				1289.7	793.58	S 07°49'40"E	
1C				1189.2	601.59	S 07°49'40"E	
1C				1189.2	601.59	S 04°49'40"E	
1C				1189.2	601.59	S 01°49'40"E	
1C	70.76	N 01°29'50"W	11599.2				
Cor. to 1D	1870.90	S 89°23'10"W					
1D	1173.96	S 89°23'10"W					
1D	617.24	N 00°36'50"E					
1D	130.33	N 64°15'10"E	11599.2	635.33	635.26	N 34°21'10"E	
1D				855.06	855.03	N 34°05'00"E	
1D	710.80	S 00°44'56"E					
Cor. to 1E	4354.17	S 89°30'15"W					
1E	261.31	S 25°44'11"E					
1E	439.40	N 64°15'10"E	11599.2	862.34	862.15	N 34°10'00"E	
1E	1365.07	S 64°15'10"W	11599.2				
Cor. to 1F	775.11	N 02°56'36"W					
1F	1442.59	N 64°15'10"E	11599.2	3220.45			
1F				37.07			
1F	230.30	S 89°00'11"E					
1F	126.86	N 01°00'11"E					
1F	866.26	S 77°13'10"W	11599.16	1326.66			
1F	179.00	S 01°29'50"W					

NOTES:
 1. 1/4 Cor. Sec. 1 & 10 to Pt. of Beginning & 1-A
 2. 1/4 Cor. Sec. 9 & 10 to Pt. of Beginning 1-B, N.W. Cor. Riverview Association Land, To Pt. of Intersection with old highway curve.
 3. To Pt. of Beginning and 1-B.
 4. 1/4 Cor. Sec. 9 & 10 to Pt. of Beginning and 1-C.
 5. 1/4 Cor. Sec. 9 & 10 to S.W. Cor. Riverview Assoc. & Pt. of Beginning 1-D. Recorded distance = 615.18', measured distance = 617.24'.
 6. To N.W. Cor. Riverview Association Land, To Pt. of Beginning 1D. Distance obtained by intersecting coordinates established by the C. of S. is 710.80' & C. of E. plat shows 715' for this same distance. Measured distance = 710.80'.
 7. 1/4 Cor. Sec. 9 & 10 to Pt. of Beginning 1-E.
 8. To Pt. of Beginning and 1-E.
 9. 1/4 Cor. Sec. 9 & 10 to Pt. of Beginning and 1-F.
 10. Spiral angle = 0° 21' 00"
 11. Westerly Right of Way line, Olsen Road, To Pt. of Beginning and 1F.



NOTE: 1. CORPUS INDICATES EXISTING OLD HWY ALIGNMENT WITH A CURVE. STATE OF OREGON HWY MAP INDICATES EXISTING OLD HWY ALIGNMENT WITH C 30' CURVE. FIELD MEASUREMENT INDICATES D 10' CURVE.
 2. BASIS OF BEARING - CORPUS OF ENGRS
 3. BASIS OF CO-ORDINATES - CORPUS OF ENGRS
 4. BASIS OF DISTANCE - FIELD MEASUREMENT
 5. CORPUS OF ENGRS SHOWS 1920' FROM 1/4 COR. TO S.W. COR. OF RIVERVIEW ASSOC LAND. FIELD MEAS. INDICATE THIS TO BE 1920.90

J. VAL TORONTO & ASSOCIATES
 CONSULTING ENGINEERS
 PENSACOLA, FLORIDA
 PROJECT BOARDMAN DEVELOPMENT COMPANY LAND SURVEY
 DETAIL DRAWING TRACT A, B, C, D, E, F
 DATE: JULY 1969 SCALE: 1"=100' SHEET: 1 of 1
 BY: [Signature] CHECKED: [Signature]
 BOARDMAN, O.T. 3/1/71

C-214-K-391