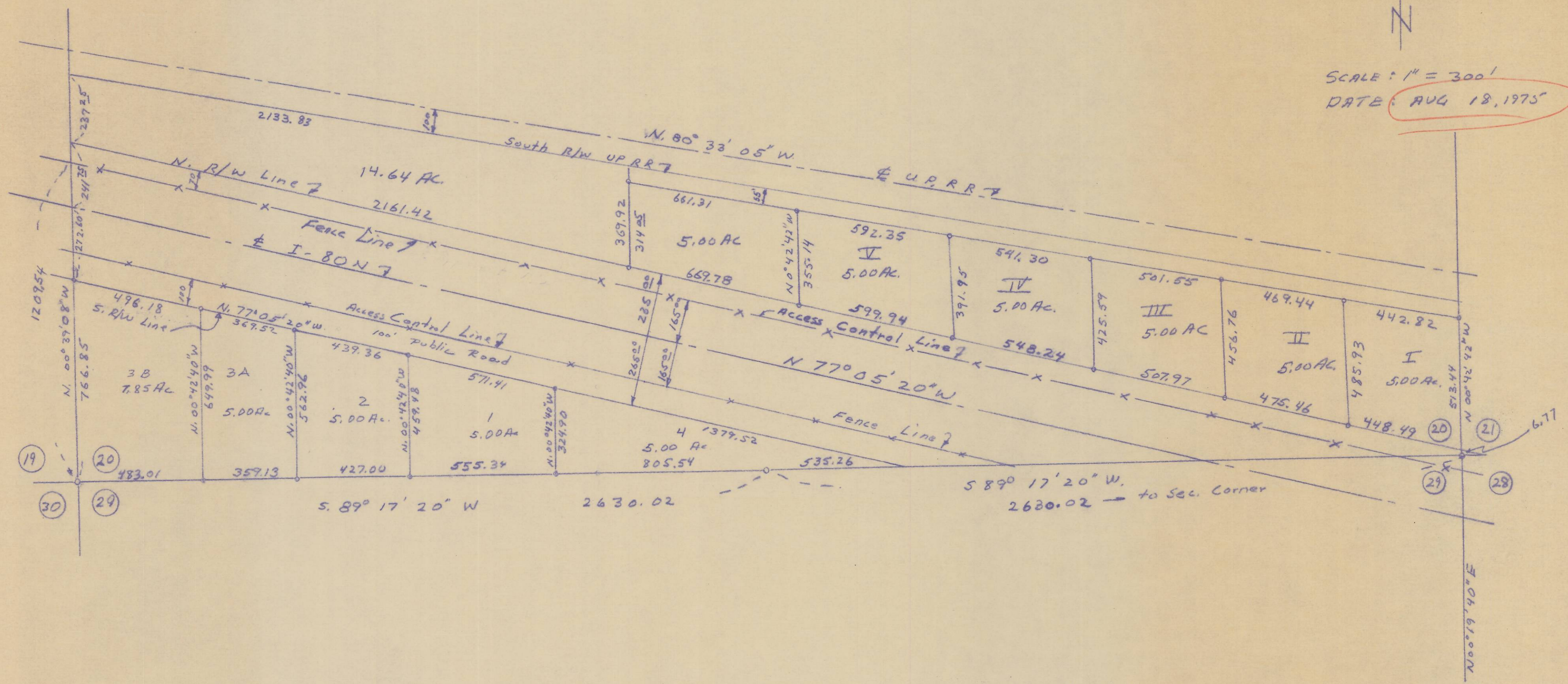


SCALE: 1" = 300'
DATE: AUG 18, 1975



MAP OF SOUTH PORTION OF SECTION 20, T4N, R27E.W.M. FOR ARNOLD BRAAT TO WRITE LEGAL DESCRIPTIONS

DONALD L. STAEBLER
CONSULTING ENGINEER
P.O. Box 91
PENDLETON, OREGON 97801

385