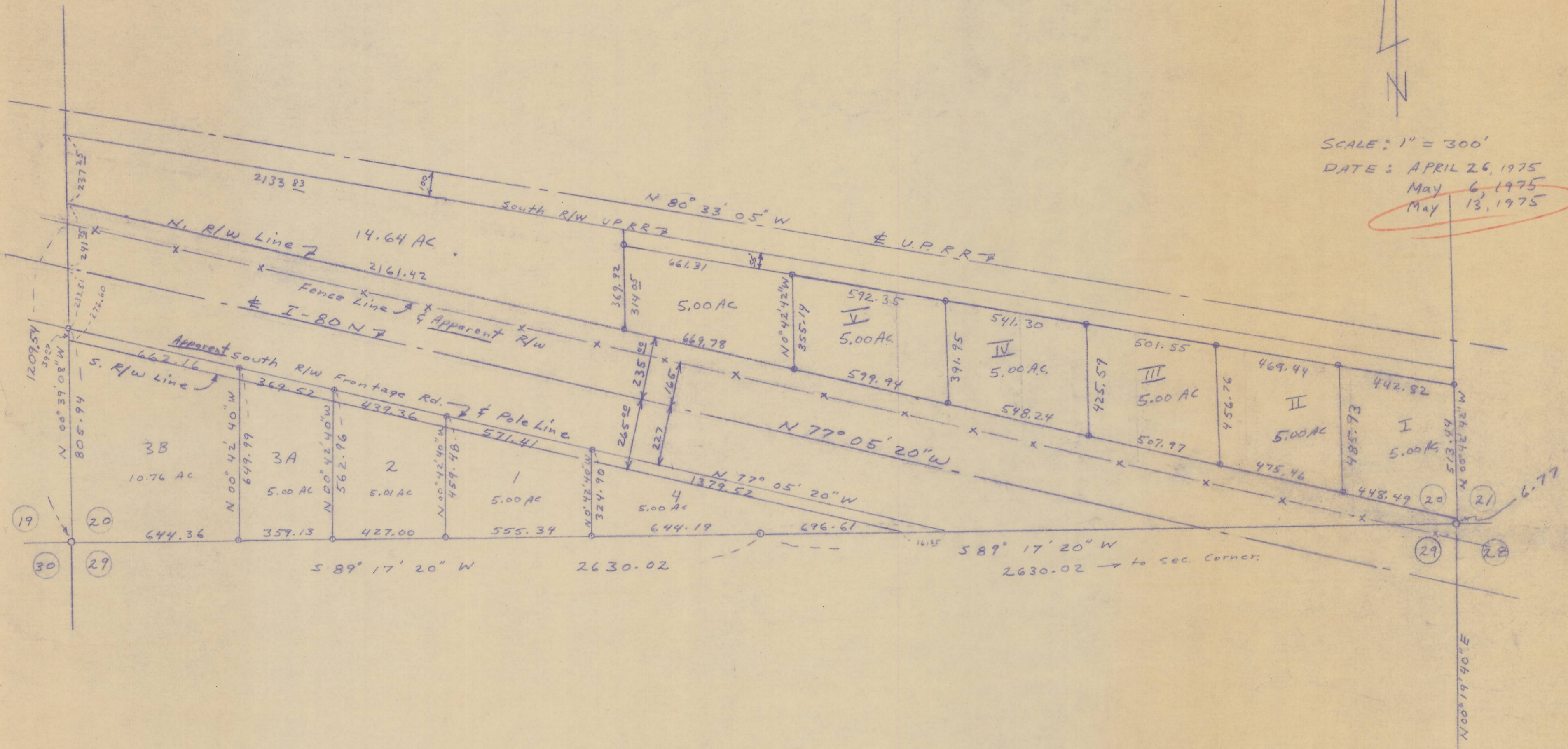


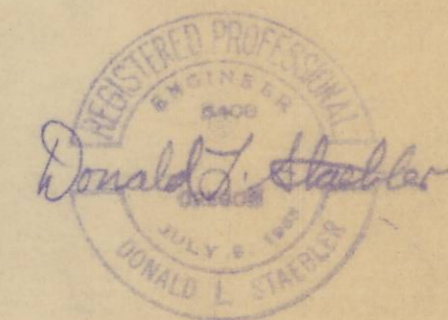
T 4 N , R 27 E W. M.



SCALE: 1" = 300'
DATE: APRIL 26, 1975
May 6, 1975
May 13, 1975



MAP OF SOUTH PORTION OF SECTION 20, T4N, R27E, W.M. FOR ARNOLD BRAAT TO WRITE LEGAL DESCRIPTIONS



DONALD L. STAEBLER
CONSULTING ENGINEER
P.O. BOX 91
PENDLETON, OREGON 97801

382

C-211-K-382

C-211-K