

TOWNSHIP 5 NORTH, RANGE 26 EAST, OF THE WILLAMETTE MERIDIAN, OREGON

DEPENDENT RESURVEY

A history of surveys is contained in the field notes.

This plat represents a dependent resurvey of a portion of the subdivisional lines of T. 5 N., R. 26 E., Willamette Meridian, Oregon, designed to restore the corners in their true original locations according to the best available evidence.

The lottings and areas are as shown on the plat approved January 8, 1870, and a plat bearing two approval dates, January 19, 1916 and October 7, 1916.

Survey executed by Frank A. Tuers, Cadastral Surveyor, April 14, 1975 to September 12, 1975, pursuant to Special Instructions dated April 11, 1975, which provided for the surveys under Group No. 864, Oregon.

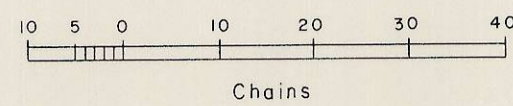
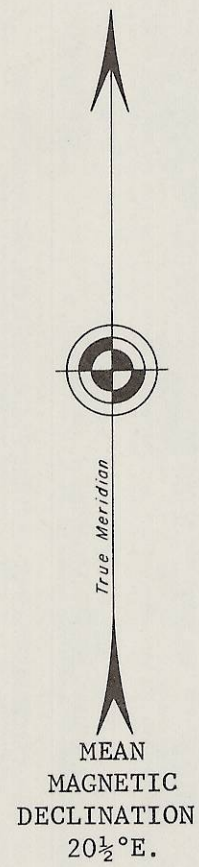
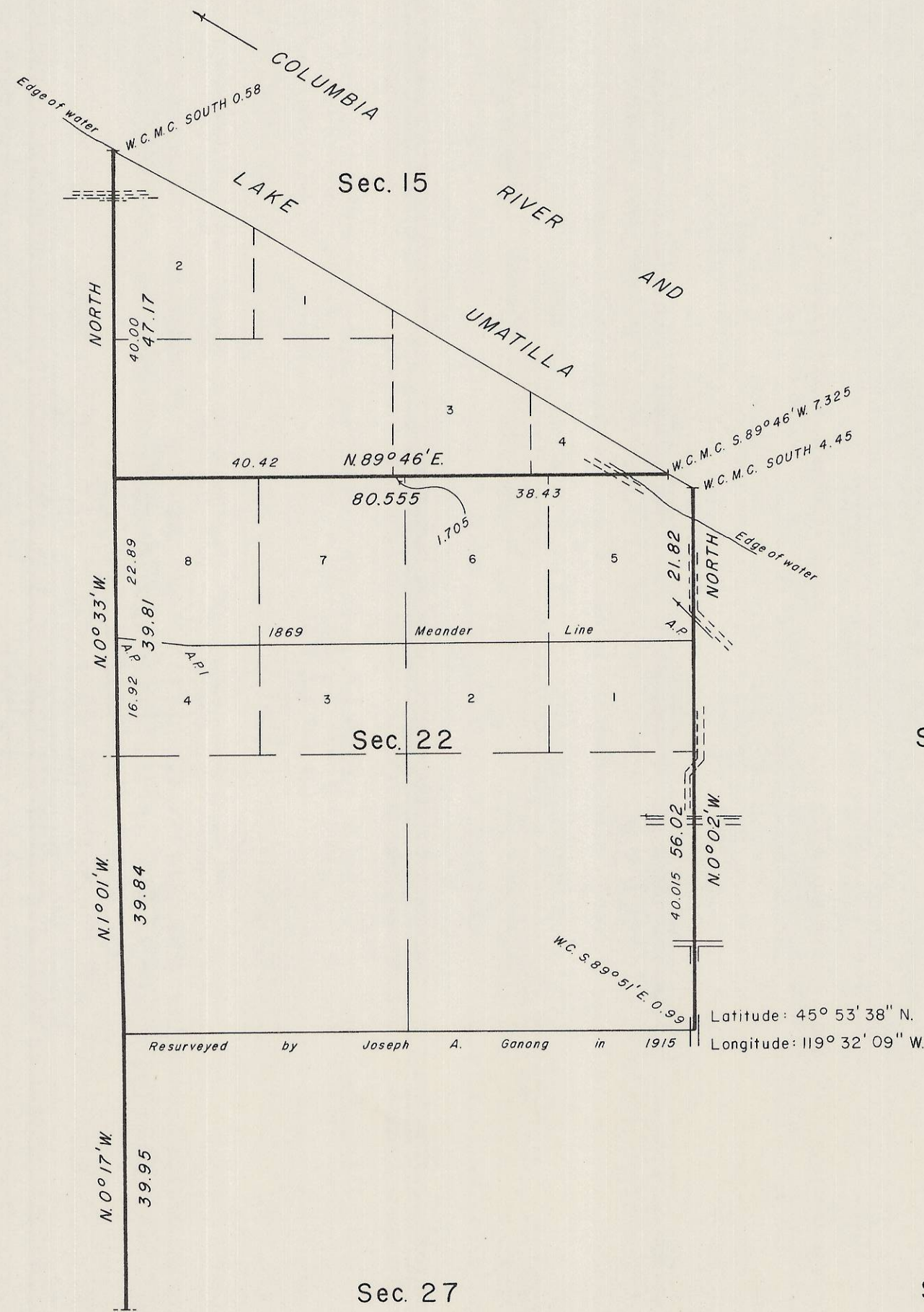
UNITED STATES DEPARTMENT OF THE INTERIOR
BUREAU OF LAND MANAGEMENT
Washington, D.C. October 4, 1977

This plat is strictly conformable to the approved field notes, and the survey, having been correctly executed in accordance with the requirements of law and the regulations of this Bureau, is hereby accepted.

For the Director

J. J. Jorke

Acting Chief, Division of Cadastral Survey



C-183-K-370

C-#183-K

370

M.D.