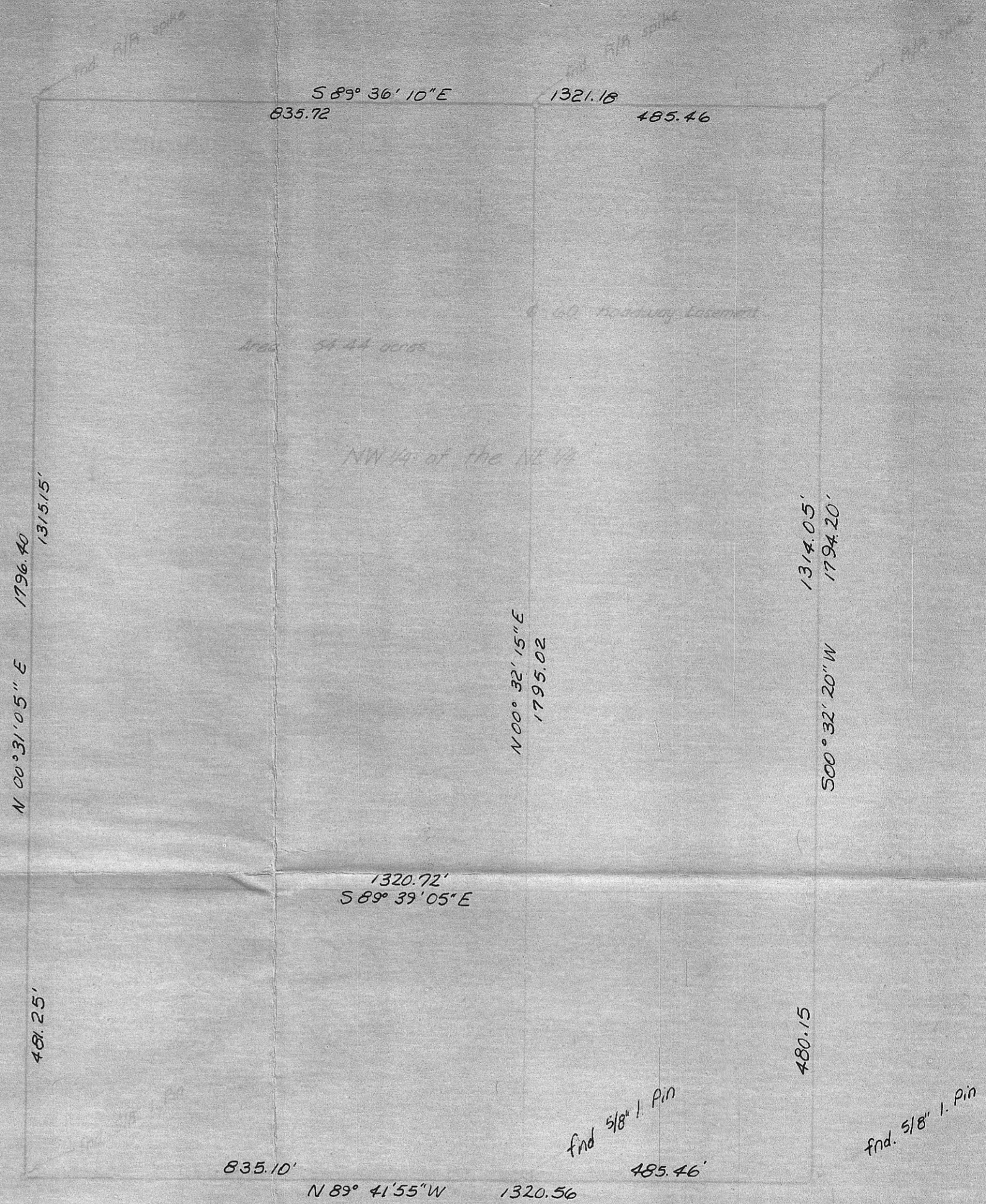


NE 1/4, Section 20, T4N, R25E, W1W
Vicinity Map
Scale: 1" = 500'

Note:

Survey is based upon surveys by Humbert Engineering Co. Survey for Earl Trudeau, Drawing No. 16, 126, dated January 19, 1975, County No. 74. A survey for Earl Trudeau, Drawing No. 13, 116, dated August 31, 1978, County No. 157. A



Detail Map
Scale: 1" = 20'

As Noted
11-21-78

C-170-K-361

JODY TATONE
Parcel in West half NE 1/4, Sec. 20, T4N, R25E, W1W. 78-74C
K-170-K